


Product datasheet

Anti-LYPD3 antibody [SP250] - N-terminal ab192845

Recombinant RabMAb

★ ★ ★ ★ ★ **1 Abreviews** [3 Images](#)

Overview

Product name	Anti-LYPD3 antibody [SP250] - N-terminal
Description	Rabbit monoclonal [SP250] to LYPD3 - N-terminal
Host species	Rabbit
Tested applications	Suitable for: IHC-P, Flow Cyt
Species reactivity	Reacts with: Human Predicted to work with: Mouse, Rat 
Immunogen	Synthetic peptide. This information is proprietary to Abcam and/or its suppliers.
Positive control	IHC-P: Human skin tissue. Flow Cytometry: BxPC-3 cells.
General notes	This product is FOR RESEARCH USE ONLY. For commercial use, please contact partnerships@abcam.com.

Properties

Form	Liquid
Storage instructions	Shipped at 4°C. Store at +4°C short term (1-2 weeks). Upon delivery aliquot. Store at -20°C long term. Avoid freeze / thaw cycle.
Storage buffer	pH: 7.60 Preservative: 0.1% Sodium azide Constituents: PBS, 1% BSA
Purity	Protein A/G purified
Purification notes	Purified from TCS by Protein A/G.
Clonality	Monoclonal
Clone number	SP250
Isotype	IgG

Applications

The Abpromise guarantee Our **Abpromise guarantee** covers the use of ab192845 in the following tested applications.

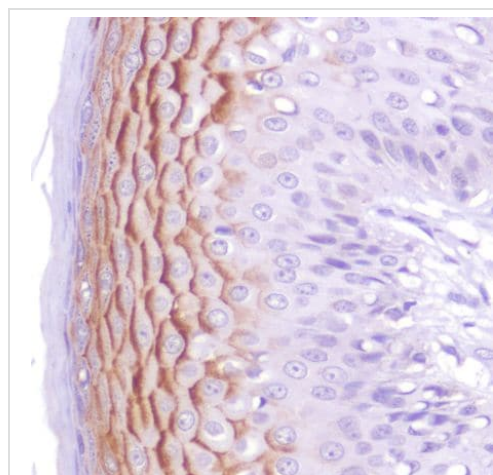
The application notes include recommended starting dilutions; optimal dilutions/concentrations should be determined by the end user.

Application	Abreviews	Notes
IHC-P		1/100. Boil tissue section in citrate buffer pH 6.0 for 10 minutes followed by cooling at room temperature for 20 minutes. Incubate with primary antibody for 10 minutes at room temperature
Flow Cyt	★ ★ ★ ★ ★ (1)	1/100. Incubate with primary antibody for 30 minutes at 4°C.

Target

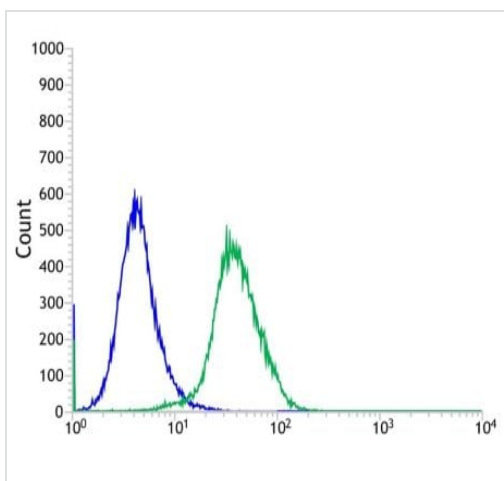
Function	Supports cell migration. May be involved in urothelial cell-matrix interactions. May be involved in tumor progression.
Tissue specificity	Expressed in placenta, skin and urothelium. Found in suprabasal keratinocytes of chronic wounds. Weak expression is found in esophagus and peripheral blood mononuclear cells. Found in the majority of primary and metastatic transitional cell carcinomas (TCCs) and as well in breast cancer tissues, but not in adjacent normal tissues. High expression is found in the tumor component of some noninvasive superficial lesions and in invasive and metastatic urothelial cancers.
Sequence similarities	Contains 2 UPAR/Ly6 domains.
Post-translational modifications	N-glycosylated and O-glycosylated.
Cellular localization	Cell membrane.

Images



Formalin-fixed, paraffin-embedded human skin tissue stained for LYPD3 using ab192845 at 1/100 dilution in immunohistochemical analysis.

Immunohistochemistry (Formalin/PFA-fixed paraffin-embedded sections) - Anti-LYPD3 antibody [SP250]
- N-terminal (ab192845)



Flow cytometric analysis of BxPC-3 (human pancreas adenocarcinoma cell line) cells labeling LYPD3 with ab192845 at 1/100 dilution (green) compared with a negative control rabbit IgG (blue).

Flow Cytometry - Anti-LYPD3 antibody [SP250] - N-terminal (ab192845)

Why choose a recombinant antibody?



Research with confidence
Consistent and reproducible results



Long-term and scalable supply
Recombinant technology



Success from the first experiment
Confirmed specificity



Ethical standards compliant
Animal-free production

Anti-LYPD3 antibody [SP250] - N-terminal (ab192845)

Please note: All products are "FOR RESEARCH USE ONLY. NOT FOR USE IN DIAGNOSTIC PROCEDURES"

Our Abpromise to you: Quality guaranteed and expert technical support

- Replacement or refund for products not performing as stated on the datasheet
- Valid for 12 months from date of delivery
- Response to your inquiry within 24 hours
- We provide support in Chinese, English, French, German, Japanese and Spanish
- Extensive multi-media technical resources to help you
- We investigate all quality concerns to ensure our products perform to the highest standards

If the product does not perform as described on this datasheet, we will offer a refund or replacement. For full details of the Abpromise, please visit <https://www.abcam.com/abpromise> or contact our technical team.

Terms and conditions

- Guarantee only valid for products bought direct from Abcam or one of our authorized distributors