

## Product datasheet

### Anti-LYRIC/AEG1 antibody [EP4445] $\alpha$ b124789

Recombinant RabMAb

[14 References](#) [5 Images](#)

#### Overview

Product name	Anti-LYRIC/AEG1 antibody [EP4445]
Description	Rabbit monoclonal [EP4445] to LYRIC/AEG1
Host species	Rabbit
Tested applications	<b>Suitable for:</b> WB, IHC-P, ICC/IF <b>Unsuitable for:</b> Flow Cyt or IP
Species reactivity	<b>Reacts with:</b> Mouse, Rat, Human
Immunogen	Synthetic peptide within Human LYRIC/AEG1 aa 250-350. The exact sequence is proprietary.
Positive control	HeLa, Jurkat, PC3, PC12 and NIH 3T3 cell lysates; Human brain and breast tissues; HeLa cells.
General notes	This product is a recombinant monoclonal antibody, which offers several advantages including: <ul style="list-style-type: none"> <li>- High batch-to-batch consistency and reproducibility</li> <li>- Improved sensitivity and specificity</li> <li>- Long-term security of supply</li> <li>- Animal-free production</li> </ul> For more information <a href="#">see here</a> . Our RabMAb <sup>®</sup> technology is a patented hybridoma-based technology for making rabbit monoclonal antibodies. For details on our patents, please refer to <a href="#">RabMAb<sup>®</sup> patents</a> .

#### Properties

Form	Liquid
Storage instructions	Shipped at 4°C. Store at +4°C short term (1-2 weeks). Upon delivery aliquot. Store at -20°C. Stable for 12 months at -20°C.
Storage buffer	pH: 7.20 Preservative: 0.05% Sodium azide Constituents: 0.1% BSA, 40% Glycerol (glycerin, glycerine), 9.85% Tris glycine, 50% Tissue culture supernatant
Purity	Protein A purified
Clonality	Monoclonal
Clone number	EP4445

Isotype

IgG

## Applications

### The Abpromise guarantee

Our **Abpromise guarantee** covers the use of ab124789 in the following tested applications.

The application notes include recommended starting dilutions; optimal dilutions/concentrations should be determined by the end user.

Application	Abreviews	Notes
WB		1/10000 - 1/50000. Detects a band of approximately 75 kDa (predicted molecular weight: 64 kDa).
IHC-P		1/100 - 1/250. Perform heat mediated antigen retrieval before commencing with IHC staining protocol. Heat up to 98 degrees C, below boiling, and then let cool for 10-20 min.
ICC/IF		1/500.

### Application notes

Is unsuitable for Flow Cyt or IP.

## Target

### Function

Downregulates SLC1A2/EAAT2 promoter activity when expressed ectopically. Activates the nuclear factor kappa-B (NF-kappa-B) transcription factor. Promotes anchorage-independent growth of immortalized melanocytes and astrocytes which is a key component in tumor cell expansion. Promotes lung metastasis and also has an effect on bone and brain metastasis, possibly by enhancing the seeding of tumor cells to the target organ endothelium. Induces chemoresistance.

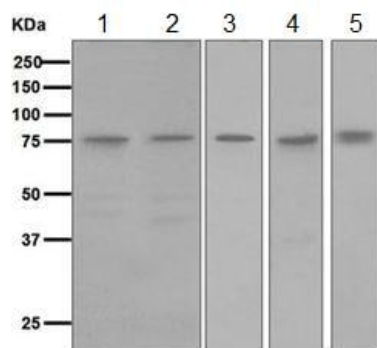
### Tissue specificity

Widely expressed with highest levels in muscle-dominating organs such as skeletal muscle, heart, tongue and small intestine and in endocrine glands such as thyroid and adrenal gland.  
Overexpressed in various cancers including breast, brain, prostate, melanoma and glioblastoma multiforme.

### Cellular localization

Endoplasmic reticulum membrane. Nucleus membrane. Cell junction > tight junction. Nucleus > nucleolus. Cytoplasm > perinuclear region. In epithelial cells, recruited to tight junctions (TJ) during the maturation of the TJ complexes. A nucleolar staining may be due to nuclear targeting of an isoform lacking the transmembrane domain (By similarity). TNF-alpha causes translocation from the cytoplasm to the nucleus.

## Images



Western blot - Anti-LYRIC/AEG1 antibody [EP4445] (ab124789)

**All lanes :** Anti-LYRIC/AEG1 antibody [EP4445] (ab124789) at 1/10000 dilution

**Lane 1 :** HeLa cell lysate

**Lane 2 :** Jurkat cell lysate

**Lane 3 :** PC3 cell lysate

**Lane 4 :** PC12 cell lysate

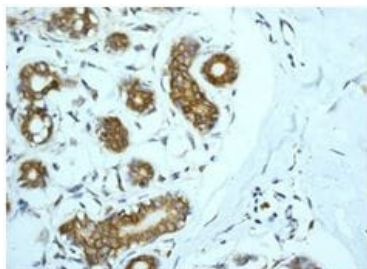
**Lane 5 :** NIH 3T3 cell lysate

Lysates/proteins at 10 µg per lane.

### Secondary

**All lanes :** Goat anti-Rabbit HRP at 1/2000 dilution

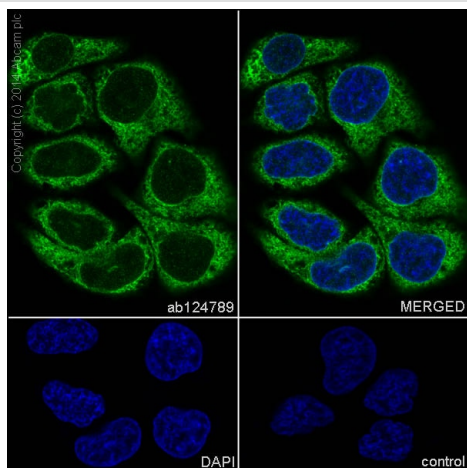
**Predicted band size:** 64 kDa



Immunohistochemistry (Formalin/PFA-fixed paraffin-embedded sections) - Anti-LYRIC/AEG1 antibody [EP4445] (ab124789)

ab124789 at 1/100 dilution staining LYRIC/AEG1 in paraffin-embedded Human breast tissues by Immunohistochemistry.

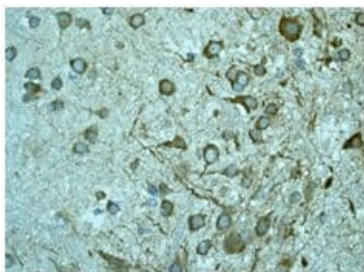
Perform heat mediated antigen retrieval before commencing with IHC staining protocol.



Immunocytochemistry/ Immunofluorescence - Anti-LYRIC/AEG1 antibody [EP4445] (ab124789)

Immunocytochemistry/Immunofluorescence analysis of HeLa cells labelling LYRIC/AEG1 with purified ab124789 at a dilution of 1/500. Cells were fixed with 4% paraformaldehyde and permeabilized with 0.1% Triton X-100. **ab150077**, an Alexa Fluor® 488-conjugated goat anti-rabbit IgG (1/1000) was used as the secondary antibody. Nuclei counterstained with DAPI (blue).

Control: PBS only.



Immunohistochemistry (Formalin/PFA-fixed paraffin-embedded sections) - Anti-LYRIC/AEG1 antibody [EP4445] (ab124789)

ab124789 at 1/100 dilution staining LYRIC/AEG1 in paraffin-embedded Human brain tissues by Immunohistochemistry.

Perform heat mediated antigen retrieval before commencing with IHC staining protocol.

### Why choose a recombinant antibody?



**Research with confidence**  
Consistent and reproducible results



**Long-term and scalable supply**  
Recombinant technology



**Success from the first experiment**  
Confirmed specificity



**Ethical standards compliant**  
Animal-free production

Anti-LYRIC/AEG1 antibody [EP4445] (ab124789)

**Please note:** All products are "FOR RESEARCH USE ONLY. NOT FOR USE IN DIAGNOSTIC PROCEDURES"

### Our Abpromise to you: Quality guaranteed and expert technical support

---

- Replacement or refund for products not performing as stated on the datasheet
- Valid for 12 months from date of delivery
- Response to your inquiry within 24 hours
- We provide support in Chinese, English, French, German, Japanese and Spanish
- Extensive multi-media technical resources to help you
- We investigate all quality concerns to ensure our products perform to the highest standards

If the product does not perform as described on this datasheet, we will offer a refund or replacement. For full details of the Abpromise, please visit <https://www.abcam.com/abpromise> or contact our technical team.

### Terms and conditions

---

- Guarantee only valid for products bought direct from Abcam or one of our authorized distributors