


Product datasheet

Anti-Lysophospholipase 1/LPL-I antibody [EPR3666] ab91600

KO **VALIDATED** **Recombinant** **RabMAb**

[1 References](#) [3 Images](#)

Overview

Product name	Anti-Lysophospholipase 1/LPL-I antibody [EPR3666]
Description	Rabbit monoclonal [EPR3666] to Lysophospholipase 1/LPL-I
Host species	Rabbit
Tested applications	Suitable for: WB Unsuitable for: IHC-P or IP
Species reactivity	Reacts with: Mouse, Human Predicted to work with: Rat 
Immunogen	Synthetic peptide corresponding to Human Lysophospholipase 1/LPL-I aa 50-150.
Positive control	WB: HAP1 cell lysate, mouse spleen whole cell lysate; human fetal heart and liver lysate and human spleen lysate.
General notes	<p>This product is a recombinant monoclonal antibody, which offers several advantages including:</p> <ul style="list-style-type: none"> - High batch-to-batch consistency and reproducibility - Improved sensitivity and specificity - Long-term security of supply - Animal-free production <p>For more information see here.</p> <p>Our RabMAb[®] technology is a patented hybridoma-based technology for making rabbit monoclonal antibodies. For details on our patents, please refer to RabMAb[®] patents.</p>

Properties

Form	Liquid
Storage instructions	Shipped at 4°C. Store at -20°C. Stable for 12 months at -20°C.
Storage buffer	pH: 7.2 Preservative: 0.05% Sodium azide Constituents: 0.1% BSA, 40% Glycerol (glycerin, glycerine), 9.85% Tris glycine, 50% Tissue culture supernatant
Purity	Protein A purified

Clonality	Monoclonal
Clone number	EPR3666
Isotype	IgG

Applications

The Abpromise guarantee Our **Abpromise guarantee** covers the use of ab91600 in the following tested applications. The application notes include recommended starting dilutions; optimal dilutions/concentrations should be determined by the end user.

Application	Abreviews	Notes
WB		1/1000 - 1/2000. Detects a band of approximately 21, 24 kDa (predicted molecular weight: 25 kDa).

Application notes Is unsuitable for IHC-P or IP.

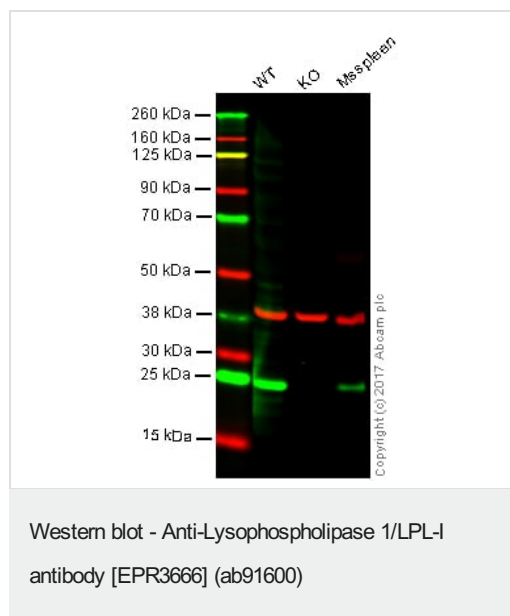
Target

Function Hydrolyzes fatty acids from S-acylated cysteine residues in proteins such as trimeric G alpha proteins or HRAS. Has depalmitoylating activity and also low lysophospholipase activity.

Sequence similarities Belongs to the AB hydrolase 2 family.

Cellular localization Cytoplasm.

Images



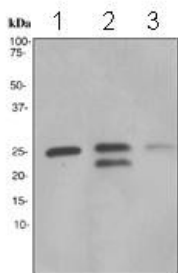
Lane 1: Wild-type HAP1 whole cell lysate (40 µg)

Lane 2: LYPLA1 knockout HAP1 whole cell lysate (40 µg)

Lane 3: Mouse spleen whole cell lysate (40 µg)

Lanes 1 - 3: Merged signal (red and green). Green - ab91600 observed at 25 kDa. Red - loading control, **ab8245**, observed at 37 kDa.

ab91600 was shown to specifically react with LYPLA1 in wild-type HAP1 cells. No band was observed when LYPLA1 knockout samples were examined. Wild-type and LYPLA1 knockout samples were subjected to SDS-PAGE. ab91600 and **ab8245** (Mouse anti-GAPDH loading control) were incubated overnight at 4°C at 1/1000 dilution and 1/10,000 dilution respectively. Blots were developed with **ab216773**. Goat anti-Rabbit IgG H&L (IRDye® 800CW) preabsorbed and **ab216776**, Goat anti-Mouse IgG H&L (IRDye® 680RD) preabsorbed secondary antibodies at 1/10,000 dilution for 1 hour at room temperature before imaging.



Western blot - Anti-Lysophospholipase 1/LPL-I antibody [EPR3666] (ab91600)

All lanes : Anti-Lysophospholipase 1/LPL-I antibody [EPR3666] (ab91600) at 1/1000 dilution

Lane 1 : Human fetal liver tissue lysate

Lane 2 : Human fetal heart tissue lysate

Lane 3 : Human spleen tissue lysate

Lysates/proteins at 10 µg per lane.

Secondary

All lanes : Goat Anti-rabbit HRP at 1/2000 dilution

Predicted band size: 25 kDa

Why choose a recombinant antibody?



Research with confidence
Consistent and reproducible results



Long-term and scalable supply
Recombinant technology



Success from the first experiment
Confirmed specificity



Ethical standards compliant
Animal-free production

Anti-Lysophospholipase 1/LPL-I antibody [EPR3666] (ab91600)

Please note: All products are "FOR RESEARCH USE ONLY. NOT FOR USE IN DIAGNOSTIC PROCEDURES"

Our Abpromise to you: Quality guaranteed and expert technical support

- Replacement or refund for products not performing as stated on the datasheet
- Valid for 12 months from date of delivery
- Response to your inquiry within 24 hours
- We provide support in Chinese, English, French, German, Japanese and Spanish
- Extensive multi-media technical resources to help you
- We investigate all quality concerns to ensure our products perform to the highest standards

If the product does not perform as described on this datasheet, we will offer a refund or replacement. For full details of the Abpromise, please visit <https://www.abcam.com/abpromise> or contact our technical team.

Terms and conditions

- Guarantee only valid for products bought direct from Abcam or one of our authorized distributors