

Product datasheet

Anti-Lysophospholipase 1/LPL-I antibody [EPR3667] ab91606

KO VALIDATED Recombinant RabMAB

★★★★★ [1 Abreviews](#) [11 References](#) [6 Images](#)

Overview

Product name	Anti-Lysophospholipase 1/LPL-I antibody [EPR3667]
Description	Rabbit monoclonal [EPR3667] to Lysophospholipase 1/LPL-I
Host species	Rabbit
Tested applications	Suitable for: WB Unsuitable for: ICC/IF
Species reactivity	Reacts with: Mouse, Rat, Human
Immunogen	Synthetic peptide within Lysophospholipase 1/LPL-I aa 150-250. The exact sequence is proprietary.
Positive control	WB: HAP1 and HEK-293T cell lysate; human liver and fetal heart lysates, mouse liver lysate, rat liver lysate; human spleen lysate; mouse heart, kidney, and spleen lysate, rat kidney lysate.
General notes	<p>This product is a recombinant monoclonal antibody, which offers several advantages including:</p> <ul style="list-style-type: none">- High batch-to-batch consistency and reproducibility- Improved sensitivity and specificity- Long-term security of supply- Animal-free production <p>For more information see here.</p> <p>Our RabMAB[®] technology is a patented hybridoma-based technology for making rabbit monoclonal antibodies. For details on our patents, please refer to RabMAB[®] patents.</p>

Properties

Form	Liquid
Storage instructions	Shipped at 4°C. Store at -20°C. Stable for 12 months at -20°C.
Storage buffer	pH: 7.20 Preservative: 0.01% Sodium azide Constituents: 59% PBS, 40% Glycerol (glycerin, glycerine), 0.05% BSA
Purity	Protein A purified
Clonality	Monoclonal

Clone number EPR3667
Isotype IgG

Applications

The Abpromise guarantee Our **Abpromise guarantee** covers the use of ab91606 in the following tested applications. The application notes include recommended starting dilutions; optimal dilutions/concentrations should be determined by the end user.

Application	Abreviews	Notes
WB	★★★★★ (1)	1/5000 - 1/20000. Predicted molecular weight: 25 kDa.

Application notes Is unsuitable for ICC/IF.

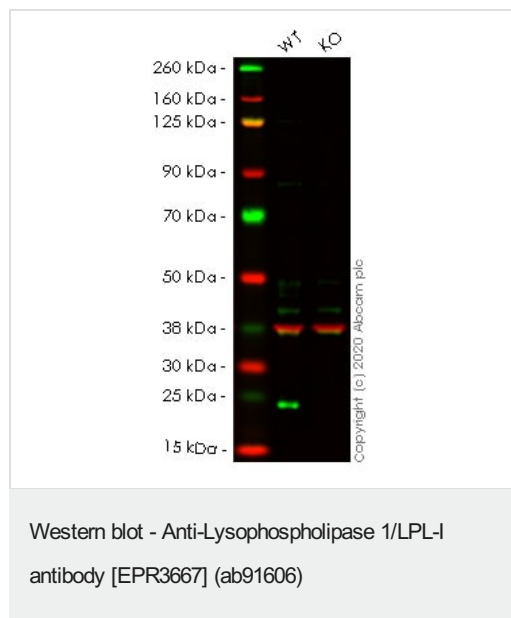
Target

Function Hydrolyzes fatty acids from S-acylated cysteine residues in proteins such as trimeric G alpha proteins or HRAS. Has depalmitoylating activity and also low lysophospholipase activity.

Sequence similarities Belongs to the AB hydrolase 2 family.

Cellular localization Cytoplasm.

Images



All lanes : Anti-Lysophospholipase 1/LPL-I antibody [EPR3667] (ab91606) at 1/5000 dilution

Lane 1 : Wild-type HEK-293T cell lysate

Lane 2 : LYPLA1 knockout HEK-293T cell lysate

Lysates/proteins at 20 µg per lane.

Performed under reducing conditions.

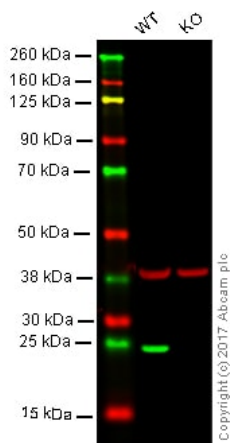
Predicted band size: 25 kDa

Observed band size: 25 kDa

Lanes 1- 2: Merged signal (red and green). Green - ab91606 observed at 25 kDa. Red - Anti-GAPDH antibody [6C5] - Loading Control (**ab8245**) observed at 37 kDa.

ab91606 was shown to react with Lysophospholipase 1/LPL-I in wild-type HEK-293T cells in western blot. Loss of signal was

observed when knockout cell line **ab266195** (knockout cell lysate **ab257509**) was used. Wild-type HEK-293T and LYPLA1 knockout HEK-293T cell lysates were subjected to SDS-PAGE. Membrane was blocked for 1 hour at room temperature in 0.1% TBST with 3% non-fat dried milk. ab91606 and Anti-GAPDH antibody [6C5] - Loading Control (**ab8245**) overnight at 4°C at a 1 in 5000 dilution and a 1 in 20000 dilution respectively. Blots were developed with Goat anti-Rabbit IgG H&L (IRDye®800CW) preadsorbed (**ab216773**) and Goat anti-Mouse IgG H&L (IRDye®680RD) preadsorbed (**ab216776**) secondary antibodies at 1 in 20000 dilution for 1 hour at room temperature before imaging.



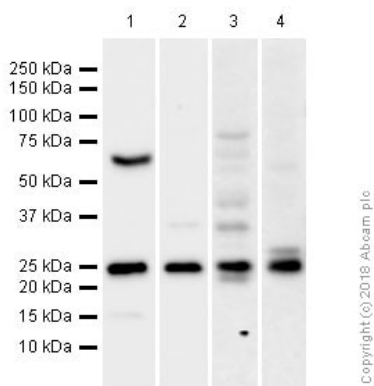
Western blot - Anti-Lysophospholipase 1/LPL-I antibody [EPR3667] (ab91606)

Lane 1: Wild-type HAP1 whole cell lysate (40 µg)

Lane 2: LYPLA1 knockout HAP1 whole cell lysate (40 µg)

Lanes 1 - 2: Merged signal (red and green). Green - ab91606 observed at 25 kDa. Red - loading control, **ab8245**, observed at 37 kDa.

ab91606 was shown to specifically react with LYPLA1 in wild-type HAP1 cells. No band was observed when LYPLA1 knockout samples were examined. Wild-type and LYPLA1 knockout samples were subjected to SDS-PAGE. ab91606 and **ab8245** (Mouse anti-GAPDH loading control) were incubated overnight at 4°C at 1/5000 dilution and 1/10,000 dilution respectively. Blots were developed with Goat anti-Rabbit IgG H&L (IRDye® 800CW) preabsorbed **ab216773** and Goat anti-Mouse IgG H&L (IRDye® 680RD) preabsorbed **ab216776** secondary antibodies at 1/10,000 dilution for 1 hour at room temperature before imaging.



Western blot - Anti-Lysophospholipase 1/LPL-I antibody [EPR3667] (ab91606)

All lanes : Anti-Lysophospholipase 1/LPL-I antibody [EPR3667] (ab91606) at 1/5000 dilution (Purified)

Lane 1 : Human liver tissue lysates

Lane 2 : Human fetal heart tissue lysates

Lane 3 : Mouse liver tissue lysates

Lane 4 : Rat liver tissue lysates

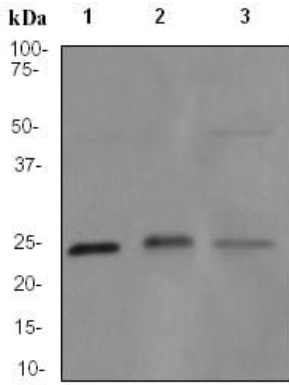
Lysates/proteins at 20 µg per lane.

Secondary

All lanes : Goat Anti-Rabbit IgG (HRP) with minimal cross-reactivity with human IgG at 1/2000 dilution

Predicted band size: 25 kDa

Observed band size: 25 kDa



Western blot - Anti-Lysophospholipase 1/LPL-I antibody [EPR3667] (ab91606)

All lanes : Anti-Lysophospholipase 1/LPL-I antibody [EPR3667] (ab91606) at 1/5000 dilution

Lane 1 : Fetal liver tissue lysate

Lane 2 : Fetal heart tissue lysate

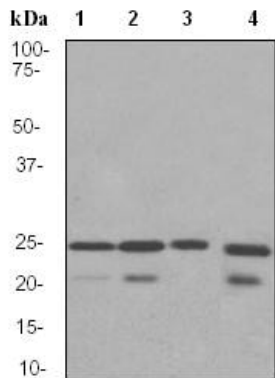
Lane 3 : Human spleen tissue lysate

Lysates/proteins at 10 µg per lane.

Secondary

All lanes : HRP labelled goat anti-rabbit IgG at 1/1000 dilution

Predicted band size: 25 kDa



Western blot - Anti-Lysophospholipase 1/LPL-I antibody [EPR3667] (ab91606)

All lanes : Anti-Lysophospholipase 1/LPL-I antibody [EPR3667] (ab91606) at 1/5000 dilution

Lane 1 : Mouse heart lysate

Lane 2 : Mouse kidney lysate

Lane 3 : Mouse spleen lysate

Lane 4 : Rat kidney lysate

Lysates/proteins at 10 µg per lane.

Secondary

All lanes : HRP labelled goat anti-rabbit IgG at 1/1000 dilution

Predicted band size: 25 kDa

Why choose a recombinant antibody?



Research with confidence
Consistent and reproducible results



Long-term and scalable supply
Recombinant technology



Success from the first experiment
Confirmed specificity



Ethical standards compliant
Animal-free production

Anti-Lysophospholipase 1/LPL-I antibody [EPR3667]
(ab91606)

Please note: All products are "FOR RESEARCH USE ONLY. NOT FOR USE IN DIAGNOSTIC PROCEDURES"

Our Abpromise to you: Quality guaranteed and expert technical support

- Replacement or refund for products not performing as stated on the datasheet
- Valid for 12 months from date of delivery
- Response to your inquiry within 24 hours
- We provide support in Chinese, English, French, German, Japanese and Spanish
- Extensive multi-media technical resources to help you
- We investigate all quality concerns to ensure our products perform to the highest standards

If the product does not perform as described on this datasheet, we will offer a refund or replacement. For full details of the Abpromise, please visit <https://www.abcam.com/abpromise> or contact our technical team.

Terms and conditions

- Guarantee only valid for products bought direct from Abcam or one of our authorized distributors