

Product datasheet

Anti-Lysozyme antibody [SP350] - C-terminal ab227708

KO VALIDATED Recombinant RabMAB

[11 Images](#)

Overview

Product name	Anti-Lysozyme antibody [SP350] - C-terminal
Description	Rabbit monoclonal [SP350] to Lysozyme - C-terminal
Host species	Rabbit
Tested applications	Suitable for: Flow Cyt (Intra), WB, IHC-P, mIHC
Species reactivity	Reacts with: Human
Immunogen	Synthetic peptide corresponding to Human Lysozyme (C terminal). Database link: P61626
Positive control	WB: THP-1, HepG2 and HL-60 whole cell lysate. IHC-P: Human tonsil, lung, liver, spleen, stomach adenocarcinoma and pancreatic adenocarcinoma tissues. Flow Cyt (intra): HL-60 cells. mIHC: Human duodenum tissue.
General notes	<p>This product is a recombinant monoclonal antibody, which offers several advantages including:</p> <ul style="list-style-type: none">- High batch-to-batch consistency and reproducibility- Improved sensitivity and specificity- Long-term security of supply- Animal-free production <p>For more information see here.</p> <p>Our RabMAB[®] technology is a patented hybridoma-based technology for making rabbit monoclonal antibodies. For details on our patents, please refer to RabMAB[®] patents.</p> <p>This product is FOR RESEARCH USE ONLY. For commercial use, please contact partnerships@abcam.com.</p>

Properties

Form	Liquid
Storage instructions	Shipped at 4°C. Store at +4°C short term (1-2 weeks). Upon delivery aliquot. Store at -20°C long term. Avoid freeze / thaw cycle.
Storage buffer	pH: 7.20 Preservative: 0.1% Sodium azide Constituents: 1% BSA, PBS
Purity	Protein A purified

Clonality	Monoclonal
Clone number	SP350
Isotype	IgG

Applications

The Abpromise guarantee Our **Abpromise guarantee** covers the use of ab227708 in the following tested applications.

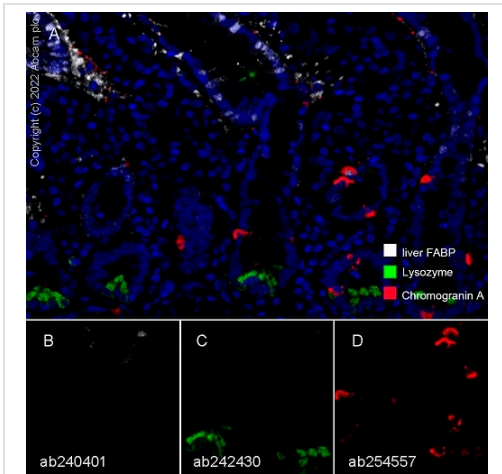
The application notes include recommended starting dilutions; optimal dilutions/concentrations should be determined by the end user.

Application	Abreviews	Notes
Flow Cyt (Intra)		1/100.
WB		1/400. Predicted molecular weight: 16 kDa.
IHC-P		1/100. Perform heat mediated antigen retrieval with Tris/EDTA buffer pH 8.0 before commencing with IHC staining protocol.
mIHC		Use at an assay dependent concentration.

Target

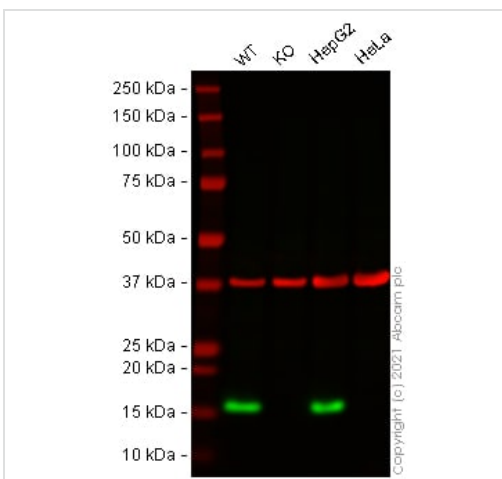
Function	Lysozymes have primarily a bacteriolytic function; those in tissues and body fluids are associated with the monocyte-macrophage system and enhance the activity of immunoagents.
Involvement in disease	Amyloidosis 8
Sequence similarities	Belongs to the glycosyl hydrolase 22 family.
Cellular localization	Secreted.

Images



Multiplex immunohistochemistry - Anti-Lysozyme antibody [SP350] - C-terminal (ab227708)

Fluorescence multiplex immunohistochemical analysis of the human duodenum (Formalin/PFA-fixed paraffin-embedded sections). Panel A: merged staining of anti-liver FABP (**ab240401**, gray; Opal™690), anti-Lysozyme (**ab242430**, green; Opal™520) and anti-Chromogranin A (**ab254557**, red; Opal™570) on human duodenum. Panel B: anti-liver FABP stained on enterocytes. Panel C: anti-Lysozyme stained on Paneth cells. Panel D: anti-Chromogranin A stained on neuroendocrine cells. Opal Polymer HRP Ms + Rb was used as a secondary antibody. The immunostaining was performed on a Leica Biosystems BOND® RX instrument with an Opal™ 4-color kit. The section was incubated in three rounds of staining: in the order of **ab240401** (1/8000 dilution), **ab242430** (1:250 dilution), and **ab254557** (1/5000 dilution) for 30 mins at room temperature. Each round was followed by a separate fluorescent tyramide signal amplification system. Heat mediated antigen retrieval with Tris-EDTA buffer (pH 9.0, epitope retrieval solution2) for 20 mins. DAPI (blue) was used as a nuclear counter stain. Image acquisition was performed with Leica SP8 confocal microscope.



Western blot - Anti-Lysozyme antibody [SP350] - C-terminal (ab227708)

All lanes : Anti-Lysozyme antibody [SP350] - C-terminal (ab227708) at 1/400 dilution

Lane 1 : Wild-type THP1 cell lysate

Lane 2 : LYZ knockout THP1 cell lysate

Lane 3 : HepG2 cell lysate

Lane 4 : HeLa cell lysate

Lysates/proteins at 20 µg per lane.

Performed under reducing conditions.

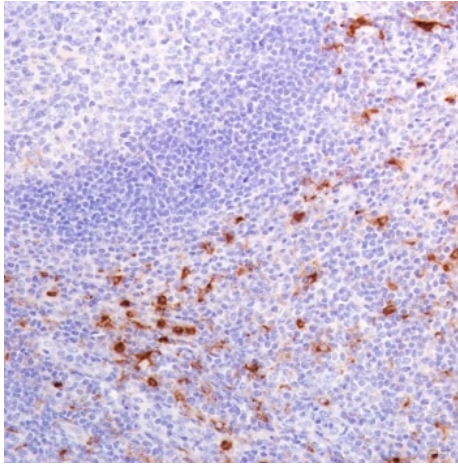
Predicted band size: 16 kDa

Observed band size: 16 kDa

Lanes 1 -4: Merged signal (red and green). Green - ab227708 observed at 16 kDa. Red - loading control **ab8245** (Mouse anti-GAPDH antibody [6C5]) observed at 37 kDa.

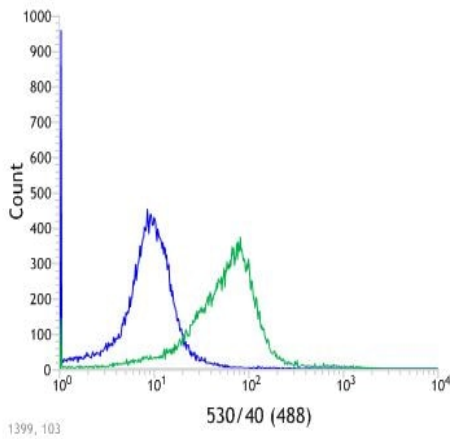
ab227708 was shown to react with Lysozyme in wild-type THP1 cells in Western blot with loss of signal observed in LYZ knockout sample. Wild-type THP1 and LYZ knockout cell lysates were subjected to SDS-PAGE. Membranes were blocked in 3 % milk in

TBS-T (0.1 % Tween[®]) before incubation with ab227708 and **ab8245** (Mouse anti-GAPDH antibody [6C5]) overnight at 4°C at a 1 in 400 dilution and a 1 in 20000 dilution respectively. Blots were incubated with Goat anti-Rabbit IgG H&L (IRDye[®] 800CW) preabsorbed (**ab216773**) and Goat anti-Mouse IgG H&L (IRDye[®] 680RD) preabsorbed (**ab216776**) secondary antibodies at 1 in 20000 dilution for 1 h at room temperature before imaging.



Immunohistochemistry (Formalin/PFA-fixed paraffin-embedded sections) - Anti-Lysozyme antibody [SP350] - C-terminal (ab227708)

Formalin-fixed, paraffin-embedded human tonsil tissue stained for Lysozyme using ab227708 at 1/100 dilution in immunohistochemical analysis.



Flow Cytometry (Intracellular) - Anti-Lysozyme antibody [SP350] - C-terminal (ab227708)

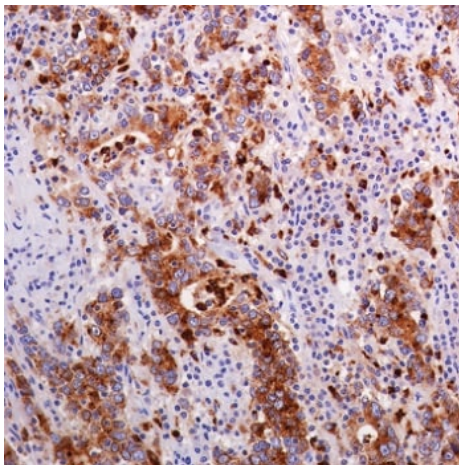
Intracellular flow cytometric analysis of HL-60 (human promyelocytic leukemia cell line) cell line labeling Lysozyme with ab227708 at 1/100 dilution (green) compared with a Rabbit IgG negative control (blue).

250-
150-
100-
75-
50-
37-
25-
20-
15-
10-

Western blot - Anti-Lysozyme antibody [SP350] - C-terminal (ab227708)

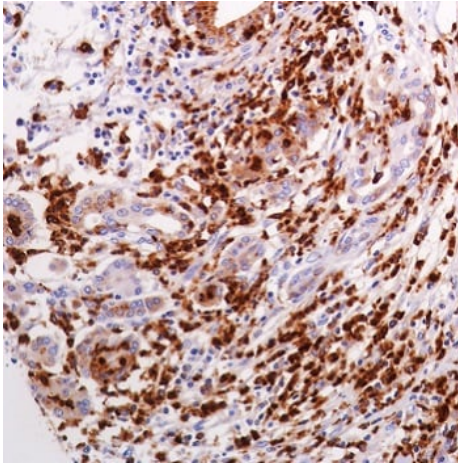
Anti-Lysozyme antibody [SP350] - C-terminal (ab227708) at 1/400 dilution + HL-60 (human promyelocytic leukemia cell line) cell lysate

Predicted band size: 16 kDa



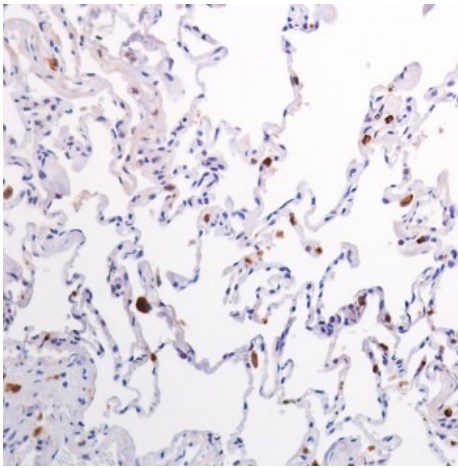
Immunohistochemistry (Formalin/PFA-fixed paraffin-embedded sections) - Anti-Lysozyme antibody [SP350] - C-terminal (ab227708)

Formalin-fixed, paraffin-embedded human stomach adenocarcinoma tissue stained for Lysozyme using ab227708 at 1/100 dilution in immunohistochemical analysis.



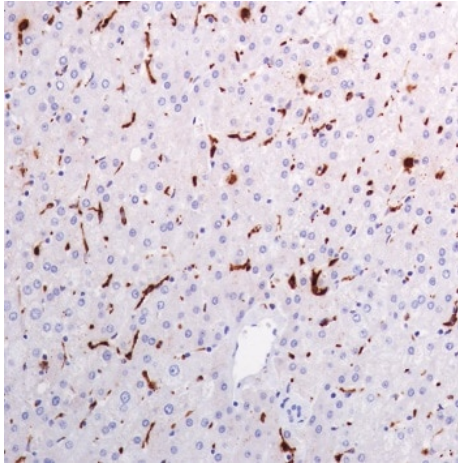
Formalin-fixed, paraffin-embedded human pancreatic adenocarcinoma tissue stained for Lysozyme using ab227708 at 1/100 dilution in immunohistochemical analysis.

Immunohistochemistry (Formalin/PFA-fixed paraffin-embedded sections) - Anti-Lysozyme antibody [SP350] - C-terminal (ab227708)



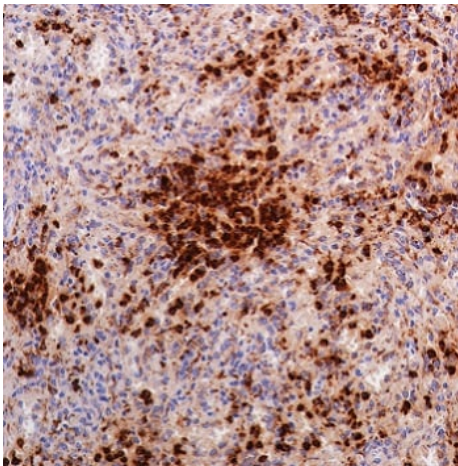
Formalin-fixed, paraffin-embedded human lung tissue stained for Lysozyme using ab227708 at 1/100 dilution in immunohistochemical analysis.

Immunohistochemistry (Formalin/PFA-fixed paraffin-embedded sections) - Anti-Lysozyme antibody [SP350] - C-terminal (ab227708)



Formalin-fixed, paraffin-embedded human liver tissue stained for Lysozyme using ab227708 at 1/100 dilution in immunohistochemical analysis.

Immunohistochemistry (Formalin/PFA-fixed paraffin-embedded sections) - Anti-Lysozyme antibody [SP350] - C-terminal (ab227708)



Formalin-fixed, paraffin-embedded human spleen tissue stained for Lysozyme using ab227708 at 1/100 dilution in immunohistochemical analysis.

Immunohistochemistry (Formalin/PFA-fixed paraffin-embedded sections) - Anti-Lysozyme antibody [SP350] - C-terminal (ab227708)

Why choose a recombinant antibody?



Research with confidence
Consistent and reproducible results



Long-term and scalable supply
Recombinant technology



Success from the first experiment
Confirmed specificity



Ethical standards compliant
Animal-free production

Anti-Lysozyme antibody [SP350] - C-terminal
(ab227708)

Please note: All products are "FOR RESEARCH USE ONLY. NOT FOR USE IN DIAGNOSTIC PROCEDURES"

Our Abpromise to you: Quality guaranteed and expert technical support

- Replacement or refund for products not performing as stated on the datasheet
- Valid for 12 months from date of delivery
- Response to your inquiry within 24 hours
- We provide support in Chinese, English, French, German, Japanese and Spanish
- Extensive multi-media technical resources to help you
- We investigate all quality concerns to ensure our products perform to the highest standards

If the product does not perform as described on this datasheet, we will offer a refund or replacement. For full details of the Abpromise, please visit <https://www.abcam.com/abpromise> or contact our technical team.

Terms and conditions

- Guarantee only valid for products bought direct from Abcam or one of our authorized distributors