


Product datasheet

Anti-M6PR (cation independent) (phospho S2409) antibody ab138453

[2 References](#) [1 Image](#)

Overview

Product name	Anti-M6PR (cation independent) (phospho S2409) antibody
Description	Rabbit polyclonal to M6PR (cation independent) (phospho S2409)
Host species	Rabbit
Specificity	ab138453 detects endogenous levels of Mannose 6 Phosphate Receptor (Cation independent) only when phosphorylated at S2409.
Tested applications	Suitable for: WB
Species reactivity	Reacts with: African green monkey Predicted to work with: Mouse 
Immunogen	Synthetic peptide. This information is proprietary to Abcam and/or its suppliers.
Positive control	WB: Extracts from COS7 cells treated with UV for 15 minutes.
General notes	<p>The Life Science industry has been in the grips of a reproducibility crisis for a number of years. Abcam is leading the way in addressing this with our range of recombinant monoclonal antibodies and knockout edited cell lines for gold-standard validation. Please check that this product meets your needs before purchasing.</p> <p>If you have any questions, special requirements or concerns, please send us an inquiry and/or contact our Support team ahead of purchase. Recommended alternatives for this product can be found below, along with publications, customer reviews and Q&As</p>

Properties

Form	Liquid
Storage instructions	Shipped at 4°C. Upon delivery aliquot and store at -20°C. Avoid freeze / thaw cycles.
Storage buffer	pH: 7.40 Preservative: 0.02% Sodium azide Constituents: 49% PBS, 50% Glycerol (glycerin, glycerine), 0.88% Sodium chloride PBS is without Mg ²⁺ and Ca ²⁺
Purity	Immunogen affinity purified
Purification notes	ab138453 was affinity-purified from rabbit antiserum by affinity-chromatography using epitope-

specific phosphopeptide. The antibody against non-phosphopeptide was removed by chromatography using non-phosphopeptide corresponding to the phosphorylation.

Clonality Polyclonal
Isotype IgG

Applications

The Abpromise guarantee Our **Abpromise guarantee** covers the use of ab138453 in the following tested applications. The application notes include recommended starting dilutions; optimal dilutions/concentrations should be determined by the end user.

Application	Abreviews	Notes
WB		1/500 - 1/1000. Predicted molecular weight: 274 kDa.

Target

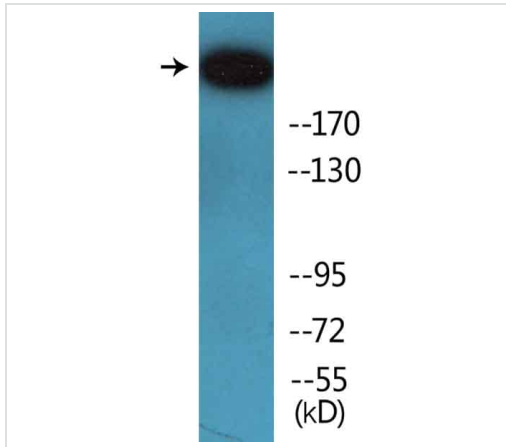
Function Transport of phosphorylated lysosomal enzymes from the Golgi complex and the cell surface to lysosomes. Lysosomal enzymes bearing phosphomannosyl residues bind specifically to mannose-6-phosphate receptors in the Golgi apparatus and the resulting receptor-ligand complex is transported to an acidic prelysosomal compartment where the low pH mediates the dissociation of the complex. This receptor also binds IGF2. Acts as a positive regulator of T-cell coactivation, by binding DPP4.

Sequence similarities Belongs to the MRL1/IGF2R family.
Contains 1 fibronectin type-II domain.

Domain Contains 15 repeating units of approximately 147 AA harboring four disulfide bonds each. The most highly conserved region within the repeat consists of a stretch of 13 AA that contains cysteines at both ends.

Cellular localization Lysosome membrane. Colocalized with DPP4 in internalized cytoplasmic vesicles adjacent to the cell surface.

Images



Anti-M6PR (cation independent) (phospho S2409) antibody (ab138453) at 1/500 dilution + Extracts from COS7 cells treated with UV for 15 minutes.

Predicted band size: 274 kDa

Western blot - Anti-M6PR (cation independent) (phospho S2409) antibody (ab138453)

Please note: All products are "FOR RESEARCH USE ONLY. NOT FOR USE IN DIAGNOSTIC PROCEDURES"

Our Abpromise to you: Quality guaranteed and expert technical support

- Replacement or refund for products not performing as stated on the datasheet
- Valid for 12 months from date of delivery
- Response to your inquiry within 24 hours
- We provide support in Chinese, English, French, German, Japanese and Spanish
- Extensive multi-media technical resources to help you
- We investigate all quality concerns to ensure our products perform to the highest standards

If the product does not perform as described on this datasheet, we will offer a refund or replacement. For full details of the Abpromise, please visit <https://www.abcam.com/abpromise> or contact our technical team.

Terms and conditions

- Guarantee only valid for products bought direct from Abcam or one of our authorized distributors