




Product datasheet

Anti-MA2 antibody ab232825

2 Images

Overview

Product name	Anti-MA2 antibody
Description	Rabbit polyclonal to MA2
Host species	Rabbit
Tested applications	Suitable for: WB
Species reactivity	Reacts with: Rat, Human Predicted to work with: Mouse 
Immunogen	Recombinant fragment (His-tag) corresponding to Rat MA2 aa 50-350. Expressed in E. coli. N-terminal tags. Database link: D4A068  Run BLAST with  Run BLAST with
Positive control	WB: Recombinant rat MA2 protein; Rat brain tissue lysate.
General notes	<p>The Life Science industry has been in the grips of a reproducibility crisis for a number of years. Abcam is leading the way in addressing this with our range of recombinant monoclonal antibodies and knockout edited cell lines for gold-standard validation. Please check that this product meets your needs before purchasing.</p> <p>If you have any questions, special requirements or concerns, please send us an inquiry and/or contact our Support team ahead of purchase. Recommended alternatives for this product can be found below, along with publications, customer reviews and Q&As</p>

Properties

Form	Liquid
Storage instructions	Shipped at 4°C. Store at +4°C short term (1-2 weeks). Upon delivery aliquot. Store at -20°C long term. Avoid freeze / thaw cycle.
Storage buffer	pH: 7.40 Preservative: 0.02% Sodium azide Constituents: 44.12% PBS, 55.77% Glycerol (glycerin, glycerine)
Purity	Protein A purified
Purification notes	Antigen-specific affinity chromatography followed by Protein A affinity chromatography.
Clonality	Polyclonal
Isotype	IgG

Applications

The Abpromise guarantee

Our **Abpromise guarantee** covers the use of ab232825 in the following tested applications.

The application notes include recommended starting dilutions; optimal dilutions/concentrations should be determined by the end user.

Application	Abreviews	Notes
WB		Use a concentration of 0.5 - 2 µg/ml. Predicted molecular weight: 41 kDa.

Target

Tissue specificity

Brain specific. In some patients suffering from cancers, it is also specifically expressed by the testicular tumor cells.

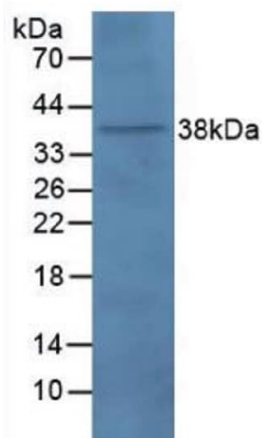
Sequence similarities

Belongs to the PNMA family.

Cellular localization

Nucleus > nucleolus.

Images



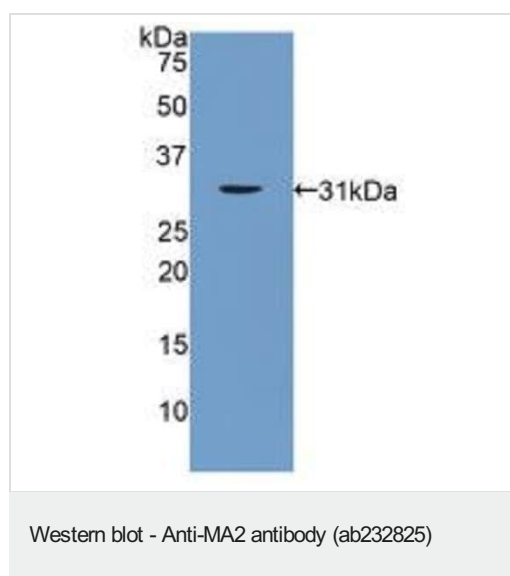
Western blot - Anti-MA2 antibody (ab232825)

Anti-MA2 antibody (ab232825) at 2 µg/ml + Rat brain tissue lysate

Secondary

HRP-linked Guinea pig anti-Rabbit at 1/2000 dilution

Predicted band size: 41 kDa



Anti-MA2 antibody (ab232825) at 2 µg/ml + Recombinant rat MA2 protein

Predicted band size: 41 kDa

Please note: All products are "FOR RESEARCH USE ONLY. NOT FOR USE IN DIAGNOSTIC PROCEDURES"

Our Abpromise to you: Quality guaranteed and expert technical support

- Replacement or refund for products not performing as stated on the datasheet
- Valid for 12 months from date of delivery
- Response to your inquiry within 24 hours
- We provide support in Chinese, English, French, German, Japanese and Spanish
- Extensive multi-media technical resources to help you
- We investigate all quality concerns to ensure our products perform to the highest standards

If the product does not perform as described on this datasheet, we will offer a refund or replacement. For full details of the Abpromise, please visit <https://www.abcam.com/abpromise> or contact our technical team.

Terms and conditions

- Guarantee only valid for products bought direct from Abcam or one of our authorized distributors