




## Product datasheet

### Anti-MACC1 antibody ab223710

4 Images

#### Overview

|                            |   |
|----------------------------|---|
| <b>Product name</b>        | Anti-MACC1 antibody   |
| <b>Description</b>         | Rabbit polyclonal to MACC1  |
| <b>Host species</b>        | Rabbit  |
| <b>Tested applications</b> | <b>Suitable for:</b> IHC-P  |
| <b>Species reactivity</b>  | <b>Reacts with:</b> Human<br><b>Predicted to work with:</b> Orangutan    |
| <b>Immunogen</b>           | Recombinant fragment corresponding to Human MACC1 aa 1-100.<br>Database link: <a href="#">Q6ZN28</a><br> <a href="#">Run BLAST with</a>  <a href="#">Run BLAST with</a>   |
| <b>Positive control</b>    | IHC-P: Human kidney, colon, colorectal cancer and stomach cancer tissue.  |
| <b>General notes</b>       | <p>The Life Science industry has been in the grips of a reproducibility crisis for a number of years. Abcam is leading the way in addressing this with our range of recombinant monoclonal antibodies and knockout edited cell lines for gold-standard validation. Please check that this product meets your needs before purchasing.</p> <p>If you have any questions, special requirements or concerns, please send us an inquiry and/or contact our Support team ahead of purchase. Recommended alternatives for this product can be found below, along with publications, customer reviews and Q&amp;As</p> |

#### Properties

|                             |   |
|-----------------------------|---|
| <b>Form</b>                 | Liquid  |
| <b>Storage instructions</b> | Shipped at 4°C. Store at +4°C short term (1-2 weeks). Upon delivery aliquot. Store at -20°C long term. Avoid freeze / thaw cycle. |
| <b>Storage buffer</b>       | pH: 7.20<br>Preservative: 0.02% Sodium azide<br>Constituents: 40% Glycerol (glycerin, glycerine), PBS                             |
| <b>Purity</b>               | Immunogen affinity purified   |
| <b>Clonality</b>            | Polyclonal  |
| <b>Isotype</b>              | IgG   |

## Applications

### The Abpromise guarantee

Our **Abpromise guarantee** covers the use of ab223710 in the following tested applications.

The application notes include recommended starting dilutions; optimal dilutions/concentrations should be determined by the end user.

| Application | Abreviews | Notes  |
|-------------|-----------|--|
| IHC-P       |           | 1/50 - 1/200. Perform heat mediated antigen retrieval with citrate buffer pH 6 before commencing with IHC staining protocol. |

## Target

### Function

Acts as a transcription activator for MET and as a key regulator of HGF-MET signaling. Promotes cell motility, proliferation and hepatocyte growth factor (HGF)-dependent scattering in vitro and tumor growth and metastasis in vivo.

### Tissue specificity

Preferentially expressed in metastasizing tumors.

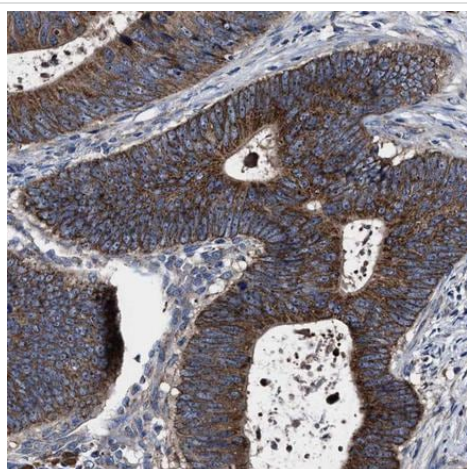
### Sequence similarities

Contains 1 SH3 domain.

### Cellular localization

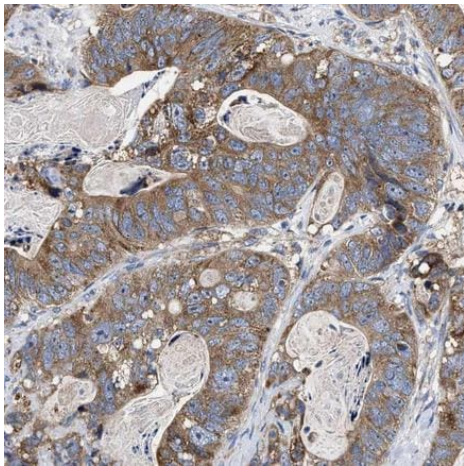
Cytoplasm. Nucleus. Mainly found in the cytoplasm in non-metastasizing tumors.

## Images



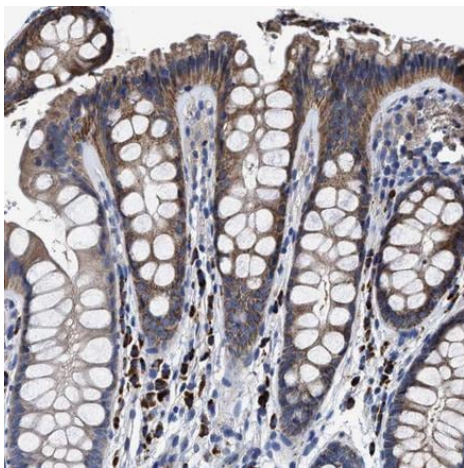
Paraffin embedded sections of human colorectal cancer were stained for MACC1 with ab223710 at 1/50 dilution in immunohistochemical analysis.

Immunohistochemistry (Formalin/PFA-fixed paraffin-embedded sections) - Anti-MACC1 antibody (ab223710)



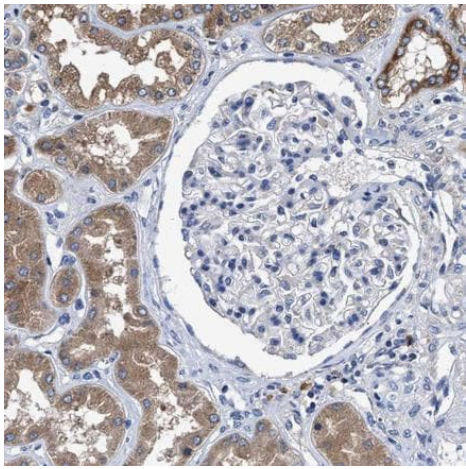
Paraffin embedded sections of human stomach cancer were stained for MACC1 with ab223710 at 1/50 dilution in immunohistochemical analysis.

Immunohistochemistry (Formalin/PFA-fixed paraffin-embedded sections) - Anti-MACC1 antibody (ab223710)



Paraffin embedded sections of human colon were stained for MACC1 with ab223710 at 1/50 dilution in immunohistochemical analysis.

Immunohistochemistry (Formalin/PFA-fixed paraffin-embedded sections) - Anti-MACC1 antibody (ab223710)



Immunohistochemistry (Formalin/PFA-fixed paraffin-embedded sections) - Anti-MACC1 antibody (ab223710)

Paraffin embedded sections of human kidney were stained for MACC1 with ab223710 at 1/50 dilution in immunohistochemical analysis.

**Please note:** All products are "FOR RESEARCH USE ONLY. NOT FOR USE IN DIAGNOSTIC PROCEDURES"

### Our Abpromise to you: Quality guaranteed and expert technical support

---

- Replacement or refund for products not performing as stated on the datasheet
- Valid for 12 months from date of delivery
- Response to your inquiry within 24 hours
- We provide support in Chinese, English, French, German, Japanese and Spanish
- Extensive multi-media technical resources to help you
- We investigate all quality concerns to ensure our products perform to the highest standards

If the product does not perform as described on this datasheet, we will offer a refund or replacement. For full details of the Abpromise, please visit <https://www.abcam.com/abpromise> or contact our technical team.

### Terms and conditions

---

- Guarantee only valid for products bought direct from Abcam or one of our authorized distributors