

Product datasheet

Anti-MAD1L1/MAD1 antibody ab11691

2 Images

Overview

Product name	Anti-MAD1L1/MAD1 antibody
Description	Rabbit polyclonal to MAD1L1/MAD1
Host species	Rabbit
Tested applications	Suitable for: WB, ICC/IF
Species reactivity	Reacts with: Saccharomyces cerevisiae
Immunogen	Fusion protein corresponding to Saccharomyces cerevisiae MAD1L1/MAD1.
Positive control	S.cerevisiae whole cell lysate (see images).
General notes	<p>The Life Science industry has been in the grips of a reproducibility crisis for a number of years. Abcam is leading the way in addressing this with our range of recombinant monoclonal antibodies and knockout edited cell lines for gold-standard validation. Please check that this product meets your needs before purchasing.</p> <p>If you have any questions, special requirements or concerns, please send us an inquiry and/or contact our Support team ahead of purchase. Recommended alternatives for this product can be found below, along with publications, customer reviews and Q&As</p>

Properties

Form	Liquid
Storage instructions	Shipped at 4°C. Upon delivery aliquot and store at -20°C or -80°C. Avoid repeated freeze / thaw cycles.
Storage buffer	Preservative: 0.1% Sodium azide Constituent: Whole serum
Purity	Whole antiserum
Clonality	Polyclonal
Isotype	IgG

Applications

The Abpromise guarantee Our **Abpromise guarantee** covers the use of ab11691 in the following tested applications. The application notes include recommended starting dilutions; optimal dilutions/concentrations should be determined by the end user.

Application	Abreviews	Notes
WB		1/100. Detects a band of approximately 83 kDa.
ICC/IF		Use at an assay dependent dilution.

Target

Function

Component of the spindle-assembly checkpoint that prevents the onset of anaphase until all chromosomes are properly aligned at the metaphase plate. May recruit MAD2L1 to unattached kinetochores. Has a role in the correct positioning of the septum. Required for anchoring MAD2L1 to the nuclear periphery. Binds to the TERT promoter and represses telomerase expression, possibly by interfering with MYC binding.

Tissue specificity

Expressed weakly at G0/G1 and highly at late S and G2/M phase.

Involvement in disease

Defects in MAD1L1 are involved in the development and/or progression of various types of cancer.

Sequence similarities

Belongs to the MAD1 family.

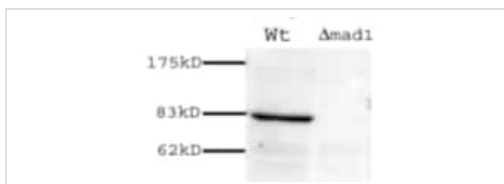
Post-translational modifications

Phosphorylated; by BUB1. Become hyperphosphorylated in late S through M phases or after mitotic spindle damage.

Cellular localization

Nucleus. Chromosome > centromere > kinetochore. Cytoplasm > cytoskeleton > microtubule organizing center > centrosome. Cytoplasm > cytoskeleton > spindle. From the beginning to the end of mitosis, it is seen to move from a diffusely nuclear distribution to the centrosome, to the spindle midzone and finally to the midbody. Colocalizes with NEK2 at the kinetochore.

Images



Western blot - Anti-MAD1L1/MAD1 antibody (ab11691)

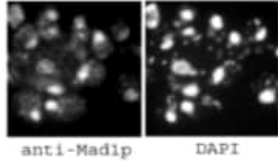
All lanes : Anti-MAD1L1/MAD1 antibody (ab11691) at 1/100 dilution

Lane 1 : Wild type *S. cerevisiae* whole cell lysate

Lane 2 : mad1 knockout *S. cerevisiae* whole cell lysate

Developed using the ECL technique.

Observed band size: 83 kDa



ab11691 at a 1/100 dilution staining MAD1 in *S.cerevisiae* by immunofluorescence.

Immunocytochemistry/ Immunofluorescence - Anti-MAD1L1/MAD1 antibody (ab11691)

Please note: All products are "FOR RESEARCH USE ONLY. NOT FOR USE IN DIAGNOSTIC PROCEDURES"

Our Abpromise to you: Quality guaranteed and expert technical support

- Replacement or refund for products not performing as stated on the datasheet
- Valid for 12 months from date of delivery
- Response to your inquiry within 24 hours
- We provide support in Chinese, English, French, German, Japanese and Spanish
- Extensive multi-media technical resources to help you
- We investigate all quality concerns to ensure our products perform to the highest standards

If the product does not perform as described on this datasheet, we will offer a refund or replacement. For full details of the Abpromise, please visit <https://www.abcam.com/abpromise> or contact our technical team.

Terms and conditions

- Guarantee only valid for products bought direct from Abcam or one of our authorized distributors