

Product datasheet

Anti-MAD1L1/MAD1 antibody [EPR14676-23] ab184560

Recombinant RabMAb

★★★★★ **1 Abreviews** [3 Images](#)

Overview

Product name	Anti-MAD1L1/MAD1 antibody [EPR14676-23]
Description	Rabbit monoclonal [EPR14676-23] to MAD1L1/MAD1
Host species	Rabbit
Tested applications	Suitable for: WB, IHC-P
Species reactivity	Reacts with: Human
Immunogen	Recombinant fragment. This information is proprietary to Abcam and/or its suppliers.
Positive control	HepG2, A431, HeLa and MCF7 lysates. Human melanoma tissue.
General notes	<p>This product is a recombinant monoclonal antibody, which offers several advantages including:</p> <ul style="list-style-type: none"> - High batch-to-batch consistency and reproducibility - Improved sensitivity and specificity - Long-term security of supply - Animal-free production <p>For more information see here.</p> <p>Our RabMAb[®] technology is a patented hybridoma-based technology for making rabbit monoclonal antibodies. For details on our patents, please refer to RabMAb[®] patents.</p>

Properties

Form	Liquid
Storage instructions	Shipped at 4°C. Store at +4°C short term (1-2 weeks). Upon delivery aliquot. Store at -20°C long term. Avoid freeze / thaw cycle.
Storage buffer	<p>pH: 7.2</p> <p>Preservative: 0.01% Sodium azide</p> <p>Constituents: 59% PBS, 40% Glycerol (glycerin, glycerine), 0.05% BSA</p>
Purity	Tissue culture supernatant
Clonality	Monoclonal
Clone number	EPR14676-23
Isotype	IgG

Applications

The Abpromise guarantee

Our **Abpromise guarantee** covers the use of ab184560 in the following tested applications.

The application notes include recommended starting dilutions; optimal dilutions/concentrations should be determined by the end user.

Application	Abreviews	Notes
WB		1/10000 - 1/50000. Predicted molecular weight: 83 kDa.
IHC-P		1/50. Perform heat mediated antigen retrieval with citrate buffer pH 6 before commencing with IHC staining protocol.

Target

Function

Component of the spindle-assembly checkpoint that prevents the onset of anaphase until all chromosomes are properly aligned at the metaphase plate. May recruit MAD2L1 to unattached kinetochores. Has a role in the correct positioning of the septum. Required for anchoring MAD2L1 to the nuclear periphery. Binds to the TERT promoter and represses telomerase expression, possibly by interfering with MYC binding.

Tissue specificity

Expressed weakly at G0/G1 and highly at late S and G2/M phase.

Involvement in disease

Defects in MAD1L1 are involved in the development and/or progression of various types of cancer.

Sequence similarities

Belongs to the MAD1 family.

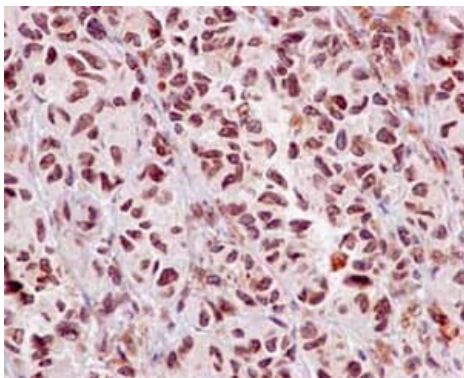
Post-translational modifications

Phosphorylated; by BUB1. Become hyperphosphorylated in late S through M phases or after mitotic spindle damage.

Cellular localization

Nucleus. Chromosome > centromere > kinetochore. Cytoplasm > cytoskeleton > microtubule organizing center > centrosome. Cytoplasm > cytoskeleton > spindle. From the beginning to the end of mitosis, it is seen to move from a diffusely nuclear distribution to the centrosome, to the spindle midzone and finally to the midbody. Colocalizes with NEK2 at the kinetochore.

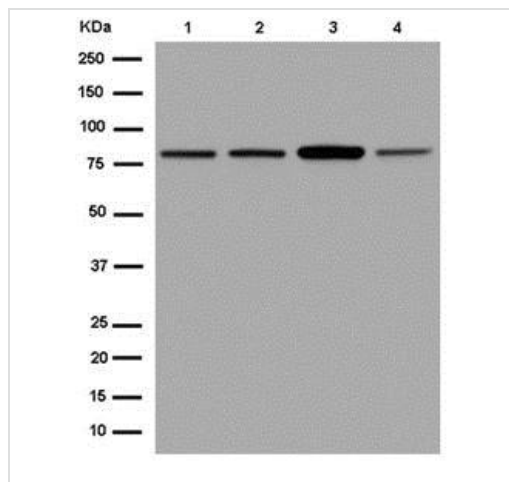
Images



Immunohistochemical analysis of formalin fixed and paraffin embedded Human melanoma tissue labeling MAD1 with ab184560 at 1/50 dilution, counterstained with Hematoxylin.

Perform heat mediated antigen retrieval with citrate buffer pH 6 before commencing with IHC staining protocol.

Immunohistochemistry (Formalin/PFA-fixed paraffin-embedded sections) - Anti-MAD1L1/MAD1 antibody [EPR14676-23] (ab184560)



Western blot - Anti-MAD1L1/MAD1 antibody
[EPR14676-23] (ab184560)

All lanes : Anti-MAD1L1/MAD1 antibody [EPR14676-23]
(ab184560) at 1/20000 dilution

Lane 1 : HepG2 lysate

Lane 2 : A431 lysate

Lane 3 : HeLa lysate

Lane 4 : MCF7 lysate

Lysates/proteins at 20 µg per lane.

Secondary

All lanes : Goat Anti-Rabbit IgG, (H+L), Peroxidase conjugated at
1/1000 dilution

Developed using the ECL technique.

Predicted band size: 83 kDa

Why choose a recombinant antibody?

Research with confidence
Consistent and reproducible results

Long-term and scalable supply
Recombinant technology

Success from the first experiment
Confirmed specificity

Ethical standards compliant
Animal-free production

Anti-MAD1L1/MAD1 antibody [EPR14676-23]
(ab184560)

Please note: All products are "FOR RESEARCH USE ONLY. NOT FOR USE IN DIAGNOSTIC PROCEDURES"

Our Abpromise to you: Quality guaranteed and expert technical support

- Replacement or refund for products not performing as stated on the datasheet
- Valid for 12 months from date of delivery
- Response to your inquiry within 24 hours
- We provide support in Chinese, English, French, German, Japanese and Spanish
- Extensive multi-media technical resources to help you

- We investigate all quality concerns to ensure our products perform to the highest standards

If the product does not perform as described on this datasheet, we will offer a refund or replacement. For full details of the Abpromise, please visit <https://www.abcam.com/abpromise> or contact our technical team.

Terms and conditions

- Guarantee only valid for products bought direct from Abcam or one of our authorized distributors