




Product datasheet

Anti-Mad2L2/REV7 antibody ab115622

★★★★★ [3 Abreviews](#) [1 References](#) [2 Images](#)

Overview

| | |
|----------------------------|---|
| Product name | Anti-Mad2L2/REV7 antibody |
| Description | Rabbit polyclonal to Mad2L2/REV7 |
| Host species | Rabbit |
| Tested applications | Suitable for: IHC-P |
| Species reactivity | Reacts with: Human Predicted to work with: Mouse, Rat, Horse, Cow, Pig, Xenopus laevis, Zebrafish  |
| Immunogen | Synthetic peptide corresponding to Human Mad2L2/REV7 aa 1-100 conjugated to keyhole limpet haemocyanin. Database link: NP_006332.2 (Peptide available as ab11254)  Run BLAST with  Run BLAST with |
| Positive control | Human Brain, Cerebellum tissue. |
| General notes | <p>The Life Science industry has been in the grips of a reproducibility crisis for a number of years. Abcam is leading the way in addressing this with our range of recombinant monoclonal antibodies and knockout edited cell lines for gold-standard validation. Please check that this product meets your needs before purchasing.</p> <p>If you have any questions, special requirements or concerns, please send us an inquiry and/or contact our Support team ahead of purchase. Recommended alternatives for this product can be found below, along with publications, customer reviews and Q&As</p> |

Properties

| | |
|-----------------------------|---|
| Form | Liquid |
| Storage instructions | Shipped at 4°C. Upon delivery aliquot and store at -20°C. Avoid repeated freeze / thaw cycles. |
| Storage buffer | pH: 7.20 Preservative: 0.01% Sodium azide Constituents: 0.88% Sodium chloride, 0.424% Potassium phosphate |
| Purity | Protein A purified |
| Clonality | Polyclonal |
| Isotype | IgG |

Applications

The Abpromise guarantee

Our **Abpromise guarantee** covers the use of ab115622 in the following tested applications.

The application notes include recommended starting dilutions; optimal dilutions/concentrations should be determined by the end user.

| Application | Abreviews | Notes |
|-------------|-----------|---|
| IHC-P | ★★★★★ (1) | Use a concentration of 10 µg/ml. Perform heat mediated antigen retrieval with citrate buffer pH 6 before commencing with IHC staining protocol. |

Target

Function

Adapter protein able to interact with different proteins and involved in different biological processes. Mediates the interaction between the error-prone DNA polymerase zeta catalytic subunit REV3L and the inserter polymerase REV1, thereby mediating the second polymerase switching in translesion DNA synthesis. Translesion DNA synthesis releases the replication blockade of replicative polymerases, stalled in presence of DNA lesions. May also regulate another aspect of cellular response to DNA damage through regulation of the JNK-mediated phosphorylation and activation of the transcriptional activator ELK1. Inhibits the FZR1- and probably CDC20-mediated activation of the anaphase promoting complex APC thereby regulating progression through the cell cycle. Regulates TCF7L2-mediated gene transcription and may play a role in epithelial-mesenchymal transdifferentiation.

Tissue specificity

Ubiquitously expressed.

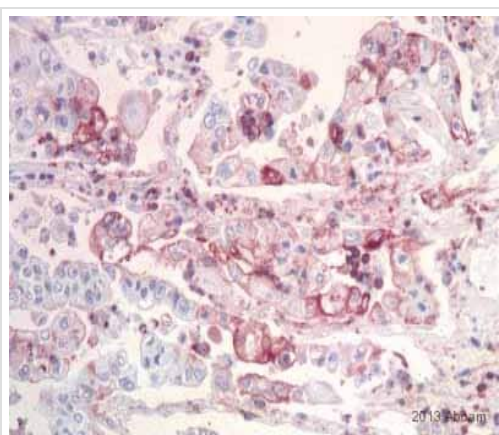
Sequence similarities

Contains 1 HORMA domain.

Cellular localization

Nucleus. Cytoplasm > cytoskeleton > spindle. Cytoplasm.

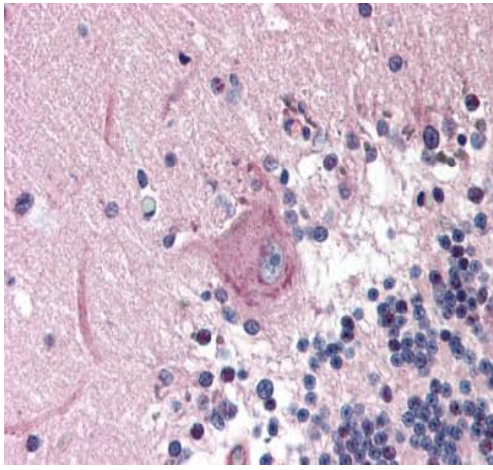
Images



ab115622 staining Mad2L2/REV7 in Human lung cancer tissue sections by Immunohistochemistry (IHC-P - paraformaldehyde-fixed, paraffin-embedded sections). Tissue was fixed with the Hope Technique and blocked for 15 minutes at 25°C. Samples were incubated with primary antibody (1/300) for 1 hour at 25°C. An undiluted HRP-conjugated Goat anti-rabbit IgG polyclonal was used as the secondary antibody.

Immunohistochemistry (Formalin/PFA-fixed paraffin-embedded sections) - Anti-Mad2L2/REV7 antibody (ab115622)

This image is courtesy of an anonymous Abreview



Immunohistochemistry (Formalin/PFA-fixed paraffin-embedded sections) - Anti-Mad2L2/REV7 antibody (ab115622)

ab115622, at 10µg/ml, staining Mad2L2/REV7 in Formalin-fixed, Paraffin-embedded Human Brain Cerebellum tissue by Immunohistochemistry followed by biotinylated secondary antibody, alkaline phosphatase-streptavidin and chromogen.

Please note: All products are "FOR RESEARCH USE ONLY. NOT FOR USE IN DIAGNOSTIC PROCEDURES"

Our Abpromise to you: Quality guaranteed and expert technical support

- Replacement or refund for products not performing as stated on the datasheet
- Valid for 12 months from date of delivery
- Response to your inquiry within 24 hours
- We provide support in Chinese, English, French, German, Japanese and Spanish
- Extensive multi-media technical resources to help you
- We investigate all quality concerns to ensure our products perform to the highest standards

If the product does not perform as described on this datasheet, we will offer a refund or replacement. For full details of the Abpromise, please visit <https://www.abcam.com/abpromise> or contact our technical team.

Terms and conditions

- Guarantee only valid for products bought direct from Abcam or one of our authorized distributors