


Product datasheet

Anti-Mad2L2/REV7 antibody [EPR13657] - BSA and Azide free ab232620

Recombinant RabMAb

5 Images

Overview

Product name	Anti-Mad2L2/REV7 antibody [EPR13657] - BSA and Azide free
Description	Rabbit monoclonal [EPR13657] to Mad2L2/REV7 - BSA and Azide free
Host species	Rabbit
Tested applications	Suitable for: Flow Cyt (Intra), WB, IHC-P, ICC/IF, IP
Species reactivity	Reacts with: Human Predicted to work with: Mouse, Rat 
Immunogen	Synthetic peptide. This information is proprietary to Abcam and/or its suppliers.
Positive control	IHC-P: Human ovarian carcinoma tissue.
General notes	<p>ab232620 is the carrier-free version of ab180579.</p> <p>Our carrier-free antibodies are typically supplied in a PBS-only formulation, purified and free of BSA, sodium azide and glycerol. The carrier-free buffer and high concentration allow for increased conjugation efficiency.</p> <p>This conjugation-ready format is designed for use with fluorochromes, metal isotopes, oligonucleotides, and enzymes, which makes them ideal for antibody labelling, functional and cell-based assays, flow-based assays (e.g. mass cytometry) and Multiplex Imaging applications.</p> <p>Use our conjugation kits for antibody conjugates that are ready-to-use in as little as 20 minutes with <1 minute hands-on-time and 100% antibody recovery: available for fluorescent dyes, HRP, biotin and gold.</p> <p>This product is compatible with the Maxpar[®] Antibody Labeling Kit from Fluidigm, without the need for antibody preparation. Maxpar[®] is a trademark of Fluidigm Canada Inc.</p> <p>This product is a recombinant monoclonal antibody, which offers several advantages including:</p> <ul style="list-style-type: none">- High batch-to-batch consistency and reproducibility- Improved sensitivity and specificity- Long-term security of supply- Animal-free production <p>For more information see here.</p> <p>Our RabMAb[®] technology is a patented hybridoma-based technology for making rabbit monoclonal antibodies. For details on our patents, please refer to RabMAb[®] patents.</p>

Properties

Form	Liquid
Storage instructions	Shipped at 4°C. Store at +4°C. Do Not Freeze.
Storage buffer	pH: 7.2 Constituent: PBS
Carrier free	Yes
Purity	Protein A purified
Clonality	Monoclonal
Clone number	EPR13657
Isotype	IgG

Applications

The Abpromise guarantee Our **Abpromise guarantee** covers the use of ab232620 in the following tested applications.

The application notes include recommended starting dilutions; optimal dilutions/concentrations should be determined by the end user.

Application	Abreviews	Notes
Flow Cyt (Intra)		Use at an assay dependent concentration.
WB		Use at an assay dependent concentration. Predicted molecular weight: 24 kDa.
IHC-P		Use at an assay dependent concentration. Perform heat mediated antigen retrieval with Tris/EDTA buffer pH 9.0 before commencing with IHC staining protocol.
ICC/IF		Use at an assay dependent concentration.
IP		Use at an assay dependent concentration.

Target

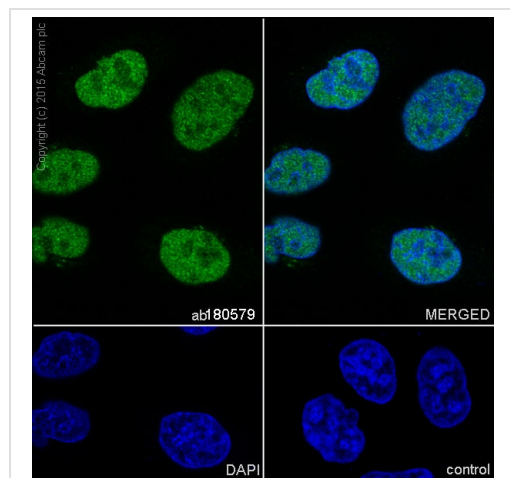
Function	Adapter protein able to interact with different proteins and involved in different biological processes. Mediates the interaction between the error-prone DNA polymerase zeta catalytic subunit REV3L and the inserter polymerase REV1, thereby mediating the second polymerase switching in translesion DNA synthesis. Translesion DNA synthesis releases the replication blockade of replicative polymerases, stalled in presence of DNA lesions. May also regulate another aspect of cellular response to DNA damage through regulation of the JNK-mediated phosphorylation and activation of the transcriptional activator ELK1. Inhibits the FZR1- and probably CDC20-mediated activation of the anaphase promoting complex APC thereby regulating progression through the cell cycle. Regulates TCF7L2-mediated gene transcription and may play a role in epithelial-mesenchymal transdifferentiation.
Tissue specificity	Ubiquitously expressed.

Sequence similarities

Contains 1 HORMA domain.

Cellular localization

Nucleus. Cytoplasm > cytoskeleton > spindle. Cytoplasm.

Images

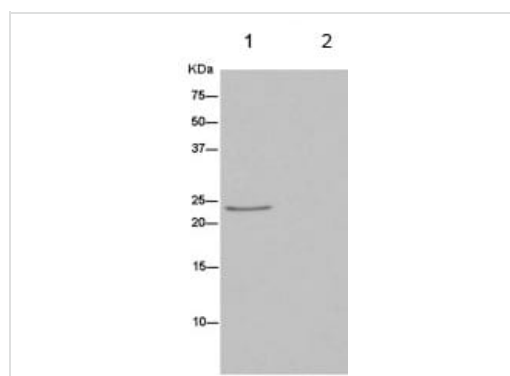
Immunocytochemistry/ Immunofluorescence - Anti-Mad2L2/REV7 antibody [EPR13657] - BSA and Azide free (ab232620)

Immunocytochemistry/Immunofluorescence analysis of HeLa cells labelling Mad2L2/REV7 with **ab129199** at 1/500. Cells were fixed with 4% Paraformaldehyde. **ab150077**, an Alexa Fluor[®] 488-conjugated goat anti-rabbit IgG (1/1000) was used as the secondary antibody.

Control: PBS only.

Nuclear counter stain: DAPI.

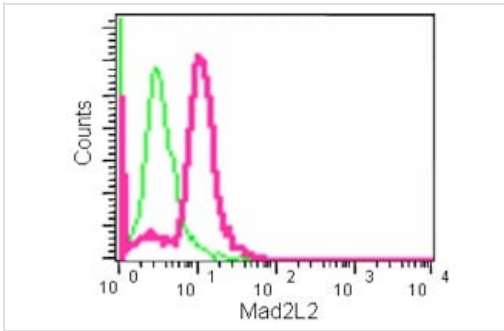
This data was developed using the same antibody clone in a different buffer formulation containing PBS, BSA, glycerol, and sodium azide (**ab180579**).



Immunoprecipitation - Anti-Mad2L2/REV7 antibody [EPR13657] - BSA and Azide free (ab232620)

Immunoprecipitation of HeLa cells labeling Mad2L2/REV7 using **ab180579** at 1/40 dilution (lane 1) or negative control (lane 2) followed by anti-Rabbit IgG (HRP), specific to the non-reduced form of IgG at 1/1500.

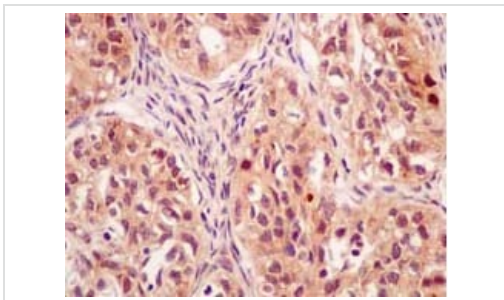
This data was developed using the same antibody clone in a different buffer formulation containing PBS, BSA, glycerol, and sodium azide (**ab180579**).



Flow Cytometry (Intracellular) - Anti-Mad2L2/REV7 antibody [EPR13657] - BSA and Azide free (ab232620)

Intracellular flow cytometric analysis of paraformaldehyde fixed K562 cells labeling Mad2L2/REV7 with **ab180579** at 1/70 dilution and Goat anti rabbit IgG (FITC) at 1/50.

This data was developed using the same antibody clone in a different buffer formulation containing PBS, BSA, glycerol, and sodium azide (**ab180579**).






Immunohistochemistry (Formalin/PFA-fixed paraffin-embedded sections) - Anti-Mad2L2/REV7 antibody [EPR13657] - BSA and Azide free (ab232620)

Immunohistochemical staining of paraffin-embedded human ovarian carcinoma tissue labeling Mad2L2/REV7 using **ab180579** at a 1/50 dilution and ImmunoHistoprobe HRP Polymer for Rabbit IgG. Counterstained with hematoxylin.

This data was developed using the same antibody clone in a different buffer formulation containing PBS, BSA, glycerol, and sodium azide (**ab180579**).

Perform heat mediated antigen retrieval with EDTA buffer pH 9 before commencing with IHC staining protocol.

Why choose a recombinant antibody?

 Research with confidence Consistent and reproducible results	 Long-term and scalable supply Recombinant technology
 Success from the first experiment Confirmed specificity	 Ethical standards compliant Animal-free production

Anti-Mad2L2/REV7 antibody [EPR13657] - BSA and Azide free (ab232620)

Please note: All products are "FOR RESEARCH USE ONLY. NOT FOR USE IN DIAGNOSTIC PROCEDURES"

Our Abpromise to you: Quality guaranteed and expert technical support

- Replacement or refund for products not performing as stated on the datasheet
- Valid for 12 months from date of delivery
- Response to your inquiry within 24 hours

- We provide support in Chinese, English, French, German, Japanese and Spanish
- Extensive multi-media technical resources to help you
- We investigate all quality concerns to ensure our products perform to the highest standards

If the product does not perform as described on this datasheet, we will offer a refund or replacement. For full details of the Abpromise, please visit <https://www.abcam.com/abpromise> or contact our technical team.

Terms and conditions

- Guarantee only valid for products bought direct from Abcam or one of our authorized distributors