

## Product datasheet

### Anti-MAdCAM1 antibody [EPR6946] $\alpha$ b134088

Recombinant RabMAb

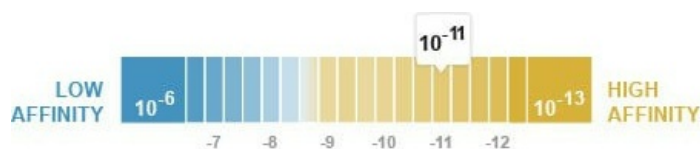
3 Images

#### Overview

<b>Product name</b>	Anti-MAdCAM1 antibody [EPR6946]
<b>Description</b>	Rabbit monoclonal [EPR6946] to MAdCAM1
<b>Host species</b>	Rabbit
<b>Tested applications</b>	<b>Suitable for:</b> WB <b>Unsuitable for:</b> Flow Cyt, ICC/IF, IHC-P or IP
<b>Species reactivity</b>	<b>Reacts with:</b> Human
<b>Immunogen</b>	Synthetic peptide within Human MAdCAM1 aa 1-100 (extracellular). The exact sequence is proprietary.
<b>Positive control</b>	HeLa, HUVEC, and ECV-304 cell lysates
<b>General notes</b>	<p>This product is a recombinant monoclonal antibody, which offers several advantages including:</p> <ul style="list-style-type: none"> <li>- High batch-to-batch consistency and reproducibility</li> <li>- Improved sensitivity and specificity</li> <li>- Long-term security of supply</li> <li>- Animal-free production</li> </ul> <p>For more information <a href="#">see here</a>.</p> <p>Our RabMAb<sup>®</sup> technology is a patented hybridoma-based technology for making rabbit monoclonal antibodies. For details on our patents, please refer to <a href="#">RabMAb<sup>®</sup> patents</a>.</p> <p>Mouse, Rat: We have preliminary internal testing data to indicate this antibody may not react with these species. Please contact us for more information.</p>

#### Properties

<b>Form</b>	Liquid
<b>Storage instructions</b>	Shipped at 4°C. Store at -20°C. Stable for 12 months at -20°C.
<b>Dissociation constant (K<sub>D</sub>)</b>	K <sub>D</sub> = 2.84 x 10 <sup>-11</sup> M



## [Learn more about K<sub>D</sub>](#)

<b>Storage buffer</b>	pH: 7.20 Preservative: 0.01% Sodium azide Constituents: 9% PBS, 40% Glycerol (glycerin, glycerine), 0.05% BSA, 50% Tissue culture supernatant
<b>Purity</b>	Tissue culture supernatant
<b>Clonality</b>	Monoclonal
<b>Clone number</b>	EPR6946
<b>Isotype</b>	IgG

## Applications

**The Abpromise guarantee** Our **Abpromise guarantee** covers the use of ab134088 in the following tested applications. The application notes include recommended starting dilutions; optimal dilutions/concentrations should be determined by the end user.

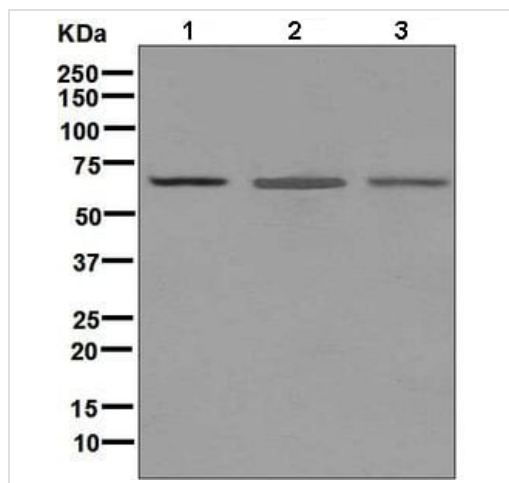
Application	Abreviews	Notes
<b>WB</b>		1/1000 - 1/10000. Detects a band of approximately 60 kDa (predicted molecular weight: 40 kDa).

**Application notes** Is unsuitable for Flow Cyt, ICC/IF, IHC-P or IP.

## Target

<b>Function</b>	Cell adhesion leukocyte receptor expressed by mucosal venules, helps to direct lymphocyte traffic into mucosal tissues including the Peyer patches and the intestinal lamina propria. It can bind both integrin alpha-4/beta-7 and L-selectin, regulating both the passage and retention of leukocytes. Isoform 2, lacking the mucin-like domain, may be specialized in supporting integrin alpha-4/beta-7-dependent adhesion strengthening, independent of L-selectin binding.
<b>Tissue specificity</b>	Highly expressed on high endothelial venules (HEV) and lamina propria venules found in the small intestine, and to a lesser extent in the colon and spleen. Very low levels of expression found in pancreas and brain. Not expressed in the thymus, prostate, ovaries, testis, heart, placenta, lung, liver, skeletal muscle, kidney or peripheral blood leukocytes.
<b>Sequence similarities</b>	Contains 2 Ig-like (immunoglobulin-like) domains.
<b>Post-translational modifications</b>	The Ser/Thr-rich mucin-like domain may provide possible sites for O-glycosylation.
<b>Cellular localization</b>	Membrane.

## Images



Western blot - Anti-MAdCAM1 antibody [EPR6946]  
(ab134088)

**All lanes :** Anti-MAdCAM1 antibody [EPR6946] (ab134088) at 1/1000 dilution

**Lane 1 :** HeLa cell lysate

**Lane 2 :** HUVEC cell lysate

**Lane 3 :** ECV-304 cell lysate

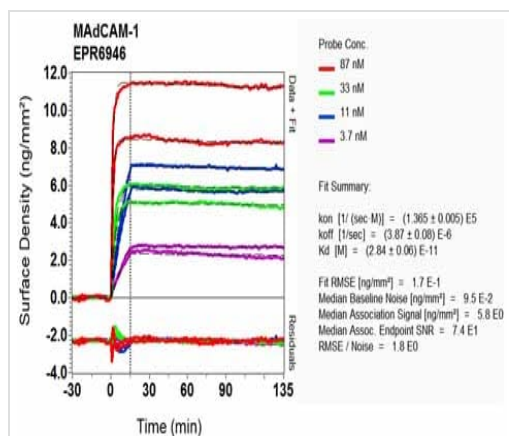
Lysates/proteins at 10 µg per lane.

### Secondary

**All lanes :** HRP labelled Goat anti-rabbit at 1/2000 dilution

**Predicted band size:** 40 kDa

**Observed band size:** 60 kDa



BI-RD Scanning - Anti-MAdCAM1 antibody  
[EPR6946] (ab134088)

Equilibrium dissociation constant ( $K_D$ )

Learn more about  $K_D$

[Click here to learn more about  \$K\_D\$](#)

### Why choose a recombinant antibody?



**Research with confidence**  
Consistent and reproducible results



**Long-term and scalable supply**  
Recombinant technology



**Success from the first experiment**  
Confirmed specificity



**Ethical standards compliant**  
Animal-free production

Anti-MAdCAM1 antibody [EPR6946] (ab134088)

**Please note:** All products are "FOR RESEARCH USE ONLY. NOT FOR USE IN DIAGNOSTIC PROCEDURES"

### Our Abpromise to you: Quality guaranteed and expert technical support

---

- Replacement or refund for products not performing as stated on the datasheet
- Valid for 12 months from date of delivery
- Response to your inquiry within 24 hours
- We provide support in Chinese, English, French, German, Japanese and Spanish
- Extensive multi-media technical resources to help you
- We investigate all quality concerns to ensure our products perform to the highest standards

If the product does not perform as described on this datasheet, we will offer a refund or replacement. For full details of the Abpromise, please visit <https://www.abcam.com/abpromise> or contact our technical team.

### Terms and conditions

---

- Guarantee only valid for products bought direct from Abcam or one of our authorized distributors