

## Product datasheet

### Anti-MAGE3 antibody [EPR20658] ab213722

Recombinant RabMAb

7 Images

#### Overview

<b>Product name</b>	Anti-MAGE3 antibody [EPR20658]
<b>Description</b>	Rabbit monoclonal [EPR20658] to MAGE3
<b>Host species</b>	Rabbit
<b>Specificity</b>	This antibody shows cross reactivity to MAGEA2 and MAGEA6 as well as weak cross reactivity to MAGEA1 and MAGEA12. It does not cross react with MAGEA4 and MAGEA8.
<b>Tested applications</b>	<b>Suitable for:</b> ICC/IF, IP, WB
<b>Species reactivity</b>	<b>Reacts with:</b> Human
<b>Immunogen</b>	Recombinant fragment. This information is proprietary to Abcam and/or its suppliers.
<b>Positive control</b>	WB: RPMI-8226 and A-375 whole cell lysates; Human MAGE3, MAGEA6 and MAGEA2 recombinant proteins. ICC/IF: HeLa and A-375 cells. IP: A-375 whole cell lysate.
<b>General notes</b>	<p>This product is a recombinant monoclonal antibody, which offers several advantages including:</p> <ul style="list-style-type: none"> <li>- High batch-to-batch consistency and reproducibility</li> <li>- Improved sensitivity and specificity</li> <li>- Long-term security of supply</li> <li>- Animal-free production</li> </ul> <p>For more information <a href="#">see here</a>.</p> <p>Our RabMAb<sup>®</sup> technology is a patented hybridoma-based technology for making rabbit monoclonal antibodies. For details on our patents, please refer to <a href="#">RabMAb<sup>®</sup> patents</a>.</p>

#### Properties

<b>Form</b>	Liquid
<b>Storage instructions</b>	Shipped at 4°C. Store at +4°C short term (1-2 weeks). Upon delivery aliquot. Store at -20°C long term. Avoid freeze / thaw cycle.
<b>Storage buffer</b>	<p>pH: 7.2</p> <p>Preservative: 0.01% Sodium azide</p> <p>Constituents: PBS, 0.05% BSA, 40% Glycerol (glycerin, glycerine)</p>
<b>Purity</b>	Protein A purified
<b>Clonality</b>	Monoclonal

Clone number	EPR20658
Isotype	IgG

## Applications

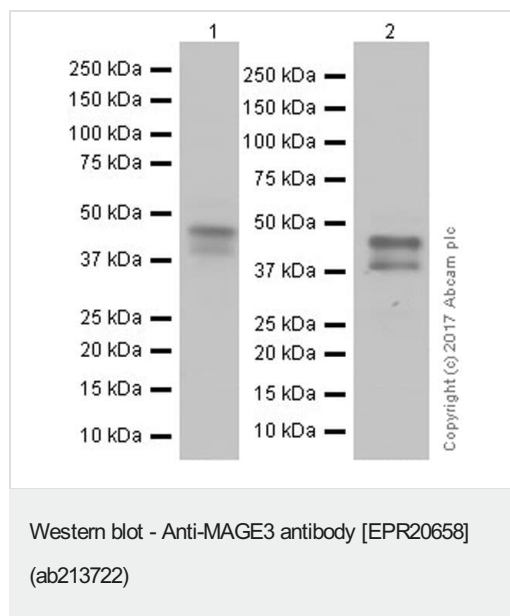
**The Abpromise guarantee** Our **Abpromise guarantee** covers the use of ab213722 in the following tested applications. The application notes include recommended starting dilutions; optimal dilutions/concentrations should be determined by the end user.

Application	Abreviews	Notes
ICC/IF		1/100.
IP		1/30.
WB		1/1000. Detects a band of approximately 45-50 kDa (predicted molecular weight: 34 kDa).

## Target

<b>Function</b>	Proposed to enhance ubiquitin ligase activity of RING-type zinc finger-containing E3 ubiquitin-protein ligases. May enhance ubiquitin ligase activity of TRIM28 and stimulate p53/TP53 ubiquitination by TRIM28. Proposed to act through recruitment and/or stabilization of the Ubl-conjugating enzyme (E2) at the E3:substrate complex. May play a role in embryonal development and tumor transformation or aspects of tumor progression. In vitro promotes cell viability in melanoma cell lines. Antigen recognized on a melanoma by autologous cytolytic T-lymphocytes.
<b>Tissue specificity</b>	Expressed in many tumors of several types, such as melanoma, head and neck squamous cell carcinoma, lung carcinoma and breast carcinoma, but not in normal tissues except for testes and placenta. Never expressed in kidney tumors, Leukemias and lymphomas.
<b>Sequence similarities</b>	Contains 1 MAGE domain.

## Images



**All lanes :** Anti-MAGE3 antibody [EPR20658] (ab213722) at 1/1000 dilution

**Lane 1 :** A-375 (human malignant melanoma cell line), whole cell lysate

**Lane 2 :** RPMI-8226 (human plasmacytoma, myeloma B lymphocyte), whole cell lysate

Lysates/proteins at 10 µg per lane.

## Secondary

**All lanes :** Goat Anti-Rabbit IgG H&L (HRP) ([ab97051](#)) at 1/100000 dilution

Developed using the ECL technique.

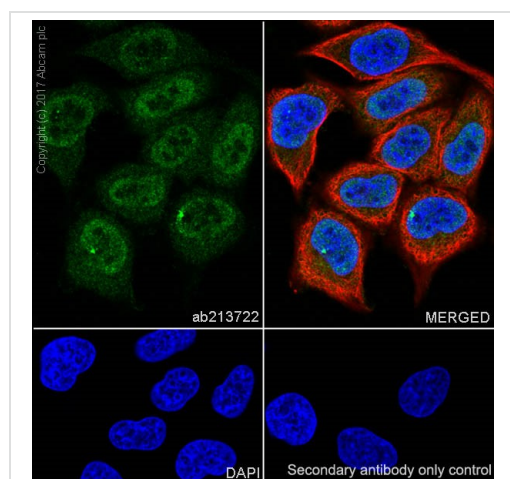
**Predicted band size:** 34 kDa

**Observed band size:** 45-50 kDa

**Exposure time:** 30 seconds

Blocking/Dilution buffer: 5% NFDM/TBST.

The molecular mass is consistent with what has been described in the literature (PMID: 17942928).

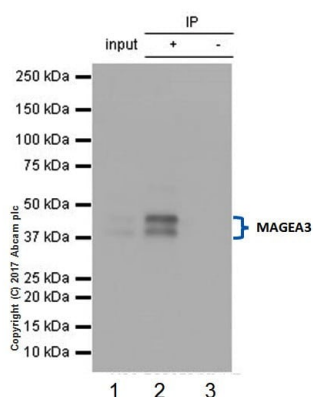


Immunocytochemistry/ Immunofluorescence - Anti-MAGE3 antibody [EPR20658] (ab213722)

Immunofluorescent analysis of 4% paraformaldehyde-fixed, 0.1% Triton X-100 permeabilized HeLa (human epithelial cell line from cervix adenocarcinoma) cells labeling MAGE3 with ab213722 at 1/100 dilution, followed by Goat Anti-Rabbit IgG H&L (Alexa Fluor® 488) ([ab150077](#)) secondary antibody at 1/1000 dilution (green). Nuclear and cytoplasmic staining in HeLa cell line (PMID: 23946777, PMID: 23390371) is observed.

The nuclear counter stain is DAPI (blue). Tubulin is detected with Anti-alpha Tubulin antibody [DM1A] - Microtubule Marker (Alexa Fluor® 594) ([ab195889](#)) (red) at 1/200 dilution.

Secondary antibody only control: Used PBS instead of primary antibody, secondary antibody is Goat Anti-Rabbit IgG H&L (Alexa Fluor® 488) ([ab150077](#)) secondary antibody at 1/1000 dilution.



Immunoprecipitation - Anti-MAGE3 antibody  
[EPR20658] (ab213722)

MAGE3 was immunoprecipitated from 0.35 mg of A-375 (human malignant melanoma cell line) whole cell lysate with ab213722 at 1/30 dilution. Western blot was performed from the immunoprecipitate using ab213722 at 1/500 dilution. VeriBlot for IP Detection Reagent (HRP) ([ab131366](#)), was used for detection at 1/10,000 dilution

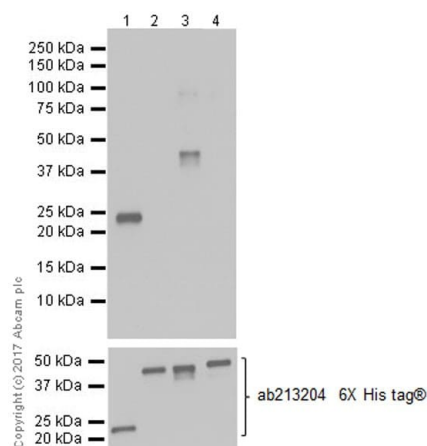
**Lane 1:** A-375 whole cell lysate 10 µg (Input).

**Lane 2:** ab213722 IP in A-375 whole cell lysate.

**Lane 3:** Rabbit monoclonal IgG ([ab172730](#)) instead of ab213722 in A-375 whole cell lysate.

**Exposure time:** 1 second.

Blocking and dilution buffer and concentration: 5% NFDM/TBST.



Western blot - Anti-MAGE3 antibody [EPR20658]  
(ab213722)

**All lanes :** Anti-MAGE3 antibody [EPR20658] (ab213722) at 1/1000 dilution

**Lane 1 :** His-tagged human MAGE3 recombinant protein (aa104-314)

**Lane 2 :** His-tagged human MAGEA4 recombinant protein (aa1-317)

**Lane 3 :** His-tagged Human MAGEA6 recombinant protein (aa1-314)

**Lane 4 :** His-tagged Human MAGEA12 recombinant protein (aa1-314)

Lysates/proteins at 0.01 µg per lane.

## Secondary

**All lanes :** Goat Anti-Rabbit IgG H&L (HRP) ([ab97051](#)) at 1/100000 dilution

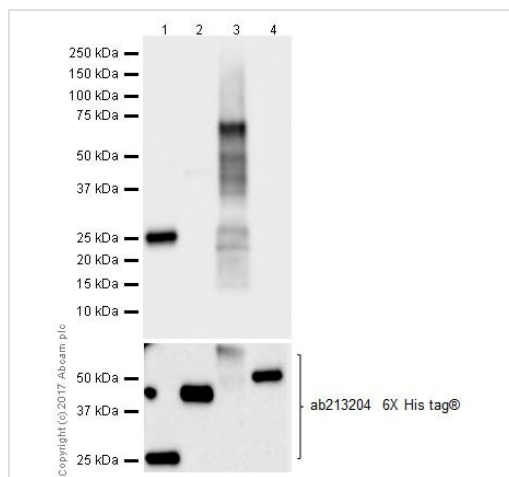
Developed using the ECL technique.

**Predicted band size:** 34 kDa

**Observed band size:** 25,39 kDa

**Exposure time:** 1 second

Blocking/Dilution buffer: 5% NFDM/TBST.



Western blot - Anti-MAGE3 antibody [EPR20658] (ab213722)

**All lanes** : Anti-MAGE3 antibody [EPR20658] (ab213722) at 1/1000 dilution

**Lane 1** : His-tagged human MAGE3 recombinant protein (aa104-314)

**Lane 2** : His-tagged human MAGEA1 recombinant protein (aa1-309)

**Lane 3** : His- and vinc-tagged Human MAGEA2 recombinant protein (aa1-314)

**Lane 4** : His-tagged Human MAGEA8 recombinant protein (aa1-318)

Lysates/proteins at 0.01 µg per lane.

### Secondary

**All lanes** : Goat Anti-Rabbit IgG H&L (HRP) (**ab97051**) at 1/100000 dilution

Developed using the ECL technique.

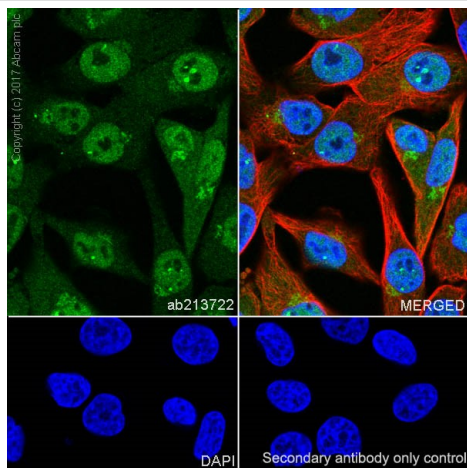
**Predicted band size:** 34 kDa

**Observed band size:** 25,39,75 kDa

**Exposure time:** 7 seconds

Blocking/Dilution buffer: 5% NFDM/TBST.

The blot was developed on a BIO-RAD® ChemiDoc™ MP instrument.



Immunocytochemistry/ Immunofluorescence - Anti-MAGE3 antibody [EPR20658] (ab213722)

Immunofluorescent analysis of 4% paraformaldehyde-fixed, 0.1% Triton X-100 permeabilized A-375 (human malignant melanoma cell line) cells labeling MAGE3 with ab213722 at 1/100 dilution, followed by Goat Anti-Rabbit IgG H&L (Alexa Fluor® 488) (**ab150077**) secondary antibody at 1/1000 dilution (green). Nuclear and cytoplasmic staining in A-375 cell line (PMID: 23946777, PMID: 23390371) is observed.

The nuclear counter stain is DAPI (blue). Tubulin is detected with Anti-alpha Tubulin antibody [DM1A] - Microtubule Marker (Alexa Fluor® 594) (**ab195889**) (red) at 1/200 dilution.

Secondary antibody only control: Used PBS instead of primary antibody, secondary antibody is Goat Anti-Rabbit IgG H&L (Alexa Fluor® 488) (**ab150077**) secondary antibody at 1/1000 dilution.

#### Why choose a recombinant antibody?



**Research with confidence**  
Consistent and reproducible results



**Long-term and scalable supply**  
Recombinant technology



**Success from the first experiment**  
Confirmed specificity



**Ethical standards compliant**  
Animal-free production

Anti-MAGE3 antibody [EPR20658] (ab213722)

**Please note:** All products are "FOR RESEARCH USE ONLY. NOT FOR USE IN DIAGNOSTIC PROCEDURES"

#### Our Abpromise to you: Quality guaranteed and expert technical support

- Replacement or refund for products not performing as stated on the datasheet
- Valid for 12 months from date of delivery
- Response to your inquiry within 24 hours
- We provide support in Chinese, English, French, German, Japanese and Spanish
- Extensive multi-media technical resources to help you
- We investigate all quality concerns to ensure our products perform to the highest standards

If the product does not perform as described on this datasheet, we will offer a refund or replacement. For full details of the Abpromise, please visit <https://www.abcam.com/abpromise> or contact our technical team.

## Terms and conditions

---

- Guarantee only valid for products bought direct from Abcam or one of our authorized distributors