

Product datasheet

Anti-MAGP2 antibody [EPCSUR1] ab171737

Recombinant RabMAb

[1 References](#) [4 Images](#)

Overview

Product name	Anti-MAGP2 antibody [EPCSUR1]
Description	Rabbit monoclonal [EPCSUR1] to MAGP2
Host species	Rabbit
Tested applications	Suitable for: WB, IHC-P
Species reactivity	Reacts with: Human Does not react with: Mouse, Rat
Immunogen	Synthetic peptide within Human MAGP2. The exact sequence is proprietary. Database link: Q13361
Positive control	MAGP2 transfected 293T cell lysates; Human colon and kidney tissues.
General notes	<p>This antibody was developed as part of a collaboration between the National Institutes of Health and the lab of Alison Miyamoto at California State University, Fullerton.</p> <p>This product is a recombinant monoclonal antibody, which offers several advantages including:</p> <ul style="list-style-type: none">- High batch-to-batch consistency and reproducibility- Improved sensitivity and specificity- Long-term security of supply- Animal-free production <p>For more information see here.</p> <p>Our RabMAb[®] technology is a patented hybridoma-based technology for making rabbit monoclonal antibodies. For details on our patents, please refer to RabMAb[®] patents.</p>

Properties

Form	Liquid
Storage instructions	Shipped at 4°C. Store at +4°C short term (1-2 weeks). Upon delivery aliquot. Store at -20°C long term. Avoid freeze / thaw cycle.
Storage buffer	pH: 7.20 Preservative: 0.01% Sodium azide Constituents: 9% PBS, 40% Glycerol (glycerin, glycerine), 0.05% BSA, 50% Tissue culture supernatant
Purity	Protein A purified

Clonality	Monoclonal
Clone number	EPCSUR1
Isotype	IgG

Applications

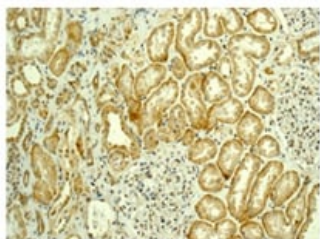
The Abpromise guarantee Our **Abpromise guarantee** covers the use of ab171737 in the following tested applications. The application notes include recommended starting dilutions; optimal dilutions/concentrations should be determined by the end user.

Application	Abreviews	Notes
WB		1/1000 - 1/5000. Predicted molecular weight: 20 kDa.
IHC-P		1/50 - 1/100. Perform heat mediated antigen retrieval with citrate buffer pH 6 before commencing with IHC staining protocol.

Target

Function	Component of the elastin-associated microfibrils.
Sequence similarities	Belongs to the MFAP family.
Post-translational modifications	Forms intermolecular disulfide bonds either with other MAGP-2 molecules or with other components of the microfibrils.
Cellular localization	Secreted > extracellular space > extracellular matrix.

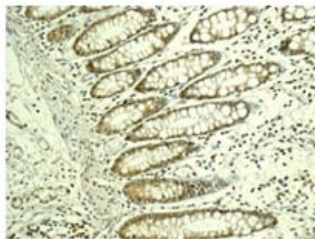
Images



Immunohistochemistry of paraffin-embedded Human kidney tissue labeling MAGP2 using ab171737 at 1/50 dilution.

Perform heat mediated antigen retrieval with citrate buffer pH 6 before commencing with IHC staining protocol.

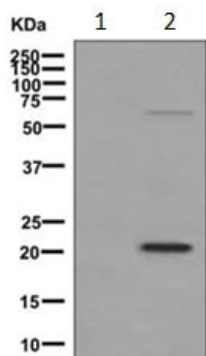
Immunohistochemistry (Formalin/PFA-fixed paraffin-embedded sections) - Anti-MAGP2 antibody [EPCSUR1] (ab171737)



Immunohistochemistry (Formalin/PFA-fixed paraffin-embedded sections) - Anti-MAGP2 antibody [EPCSUR1] (ab171737)

Immunohistochemistry of paraffin-embedded Human colon tissue labeling MAGP2 using ab171737 at 1/50 dilution.

Perform heat mediated antigen retrieval with citrate buffer pH 6 before commencing with IHC staining protocol.



Western blot - Anti-MAGP2 antibody [EPCSUR1] (ab171737)

All lanes : Anti-MAGP2 antibody [EPCSUR1] (ab171737) at 1/1000 dilution

Lane 1 : Non transfected 293T cell lysate

Lane 2 : MAGP2 transfected 293T cell lysate

Lysates/proteins at 10 µg per lane.

Predicted band size: 20 kDa

Why choose a recombinant antibody?



Research with confidence
Consistent and reproducible results



Long-term and scalable supply
Recombinant technology



Success from the first experiment
Confirmed specificity



Ethical standards compliant
Animal-free production

Anti-MAGP2 antibody [EPCSUR1] (ab171737)

Please note: All products are "FOR RESEARCH USE ONLY. NOT FOR USE IN DIAGNOSTIC PROCEDURES"

Our Promise to you: Quality guaranteed and expert technical support

- Replacement or refund for products not performing as stated on the datasheet
- Valid for 12 months from date of delivery

- Response to your inquiry within 24 hours
- We provide support in Chinese, English, French, German, Japanese and Spanish
- Extensive multi-media technical resources to help you
- We investigate all quality concerns to ensure our products perform to the highest standards

If the product does not perform as described on this datasheet, we will offer a refund or replacement. For full details of the Abpromise, please visit <https://www.abcam.com/abpromise> or contact our technical team.

Terms and conditions

- Guarantee only valid for products bought direct from Abcam or one of our authorized distributors