

Product datasheet

Anti-MAL antibody ab15418

★☆☆☆☆ [1 Abreviews](#) [4 References](#) [1 Image](#)

Overview

Product name	Anti-MAL antibody
Description	Rabbit polyclonal to MAL
Host species	Rabbit
Tested applications	Suitable for: WB
Species reactivity	Reacts with: Mouse, Xenopus laevis
Immunogen	Synthetic peptide corresponding to Human MAL aa 114-126. Sequence: CFDGFTY(R/K)HYHENI

(Peptide available as [ab39812](#))

 [Run BLAST with](#)

 [Run BLAST with](#)

General notes

The Life Science industry has been in the grips of a reproducibility crisis for a number of years. Abcam is leading the way in addressing this with our range of recombinant monoclonal antibodies and knockout edited cell lines for gold-standard validation. Please check that this product meets your needs before purchasing.

If you have any questions, special requirements or concerns, please send us an inquiry and/or contact our Support team ahead of purchase. Recommended alternatives for this product can be found below, along with publications, customer reviews and Q&As

Properties

Form	Liquid
Storage instructions	Shipped at 4°C. Store at +4°C short term (1-2 weeks). Upon delivery aliquot. Store at -20°C. Avoid freeze / thaw cycle.
Storage buffer	Preservative: 0.05% Sodium azide Constituents: 99% PBS, 0.1% BSA
Purity	Immunogen affinity purified
Clonality	Polyclonal
Isotype	IgG

Applications

The Abpromise guarantee

Our **Abpromise guarantee** covers the use of ab15418 in the following tested applications.

The application notes include recommended starting dilutions; optimal dilutions/concentrations should be determined by the end user.

Application	Abreviews	Notes
WB	★☆☆☆☆ (1)	1/500. Detects a band of approximately 17 kDa (predicted molecular weight: 18 kDa).

Target

Function

Could be an important component in vesicular trafficking cycling between the Golgi complex and the apical plasma membrane. Could be involved in myelin biogenesis and/or myelin function.

Sequence similarities

Belongs to the MAL family.
Contains 1 MARVEL domain.

Developmental stage

Expressed in the intermediate and late stages of T-cell differentiation.

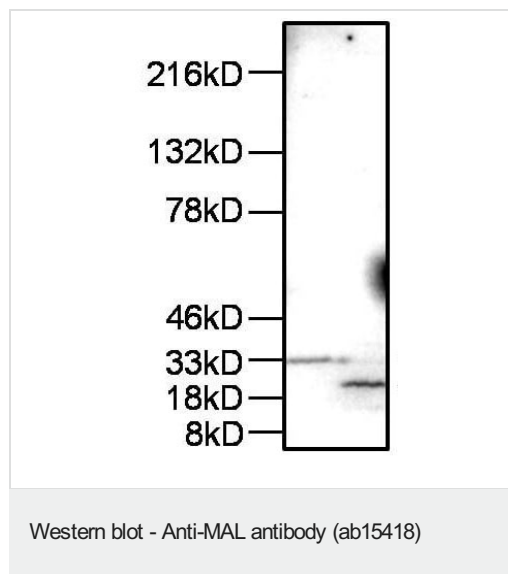
Post-translational modifications

Lipoprotein.

Cellular localization

Membrane.

Images



All lanes : Anti-MAL antibody (ab15418) at 1/5000 dilution

Lane 1 : Mouse mpkCCD cell lysate

Lane 2 : Xenopus 2f3 (Xenopus laevis) cell lysate

Lysates/proteins at 50 µg per lane.

Secondary

All lanes : HRP conjugated goat anti-rabbit

Predicted band size: 18 kDa

Please note: All products are "FOR RESEARCH USE ONLY. NOT FOR USE IN DIAGNOSTIC PROCEDURES"

Our Abpromise to you: Quality guaranteed and expert technical support

- Replacement or refund for products not performing as stated on the datasheet
- Valid for 12 months from date of delivery
- Response to your inquiry within 24 hours

- We provide support in Chinese, English, French, German, Japanese and Spanish
- Extensive multi-media technical resources to help you
- We investigate all quality concerns to ensure our products perform to the highest standards

If the product does not perform as described on this datasheet, we will offer a refund or replacement. For full details of the Abpromise, please visit <https://www.abcam.com/abpromise> or contact our technical team.

Terms and conditions

- Guarantee only valid for products bought direct from Abcam or one of our authorized distributors