

Product datasheet

Anti-MAML1 antibody - N-terminal ab155786

★★★★★ [5 Abreviews](#) [3 References](#) [3 Images](#)

Overview

Product name	Anti-MAML1 antibody - N-terminal
Description	Rabbit polyclonal to MAML1 - N-terminal
Host species	Rabbit
Tested applications	Suitable for: WB, ICC/IF
Species reactivity	Reacts with: Mouse, Human
Immunogen	Synthetic peptide, corresponding to a region within N terminal amino acids 1-45 of Human MAML1 (Uniprot ID: Q92585). Run BLAST with Expasy Run BLAST with NCBI
Positive control	HeLa and Mouse heart whole cell lysates; HeLa nuclear lysate; HeLa cells.
General notes	<p>The Life Science industry has been in the grips of a reproducibility crisis for a number of years. Abcam is leading the way in addressing this with our range of recombinant monoclonal antibodies and knockout edited cell lines for gold-standard validation. Please check that this product meets your needs before purchasing.</p> <p>If you have any questions, special requirements or concerns, please send us an inquiry and/or contact our Support team ahead of purchase. Recommended alternatives for this product can be found below, along with publications, customer reviews and Q&As</p>

Properties

Form	Liquid
Storage instructions	Shipped at 4°C. Upon delivery aliquot. Store at -20°C or -80°C. Avoid freeze / thaw cycle.
Storage buffer	pH: 7.00 Preservative: 0.01% Thimerosal (merthiolate) Constituents: 89.99% PBS, 10% Glycerol (glycerin, glycerine)
Purity	Immunogen affinity purified
Clonality	Polyclonal
Isotype	IgG

Applications

The Abpromise guarantee

Our **Abpromise guarantee** covers the use of ab155786 in the following tested applications.

The application notes include recommended starting dilutions; optimal dilutions/concentrations should be determined by the end user.

Application	Abreviews	Notes
WB	★★★★★ (4)	1/500 - 1/3000. Predicted molecular weight: 108 kDa.
ICC/IF		1/100 - 1/1000.

Target

Function

Acts as a transcriptional coactivator for NOTCH proteins. Has been shown to amplify NOTCH-induced transcription of HES1. Enhances phosphorylation and proteolytic turnover of the NOTCH intracellular domain in the nucleus through interaction with CDK8. Binds to CREBBP/CBP which promotes nucleosome acetylation at NOTCH enhancers and activates transcription. Induces phosphorylation and localization of CREBBP to nuclear foci. Plays a role in hematopoietic development by regulating NOTCH-mediated lymphoid cell fate decisions.

Tissue specificity

Widely expressed with highest levels in heart, pancreas, peripheral blood leukocytes and spleen.

Sequence similarities

Belongs to the mastermind family.

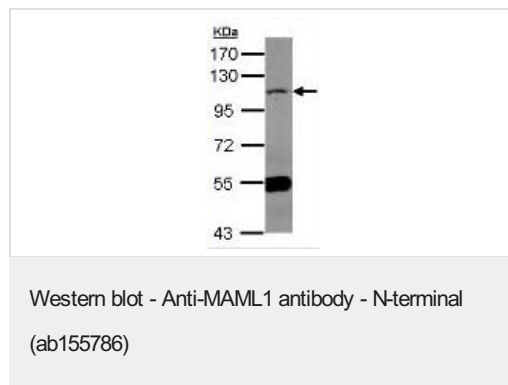
Domain

The C-terminal region is required for transcriptional activation.

Cellular localization

Nucleus speckle. Nuclear, in a punctate manner.

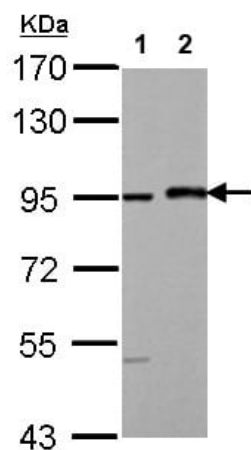
Images



Anti-MAML1 antibody - N-terminal (ab155786) at 1/1000 dilution +
Mouse heart whole cell lysate at 50 µg

Predicted band size: 108 kDa

7.5% SDS PAGE



Western blot - Anti-MAML1 antibody - N-terminal (ab155786)

All lanes : Anti-MAML1 antibody - N-terminal (ab155786) at 1/1000 dilution

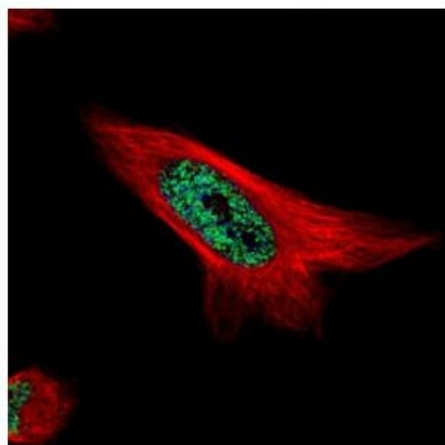
Lane 1 : HeLa whole cell lysate

Lane 2 : HeLa nuclear cell lysate

Lysates/proteins at 30 µg per lane.

Predicted band size: 108 kDa

7.5% SDS PAGE



Immunocytochemistry/ Immunofluorescence - Anti-MAML1 antibody - N-terminal (ab155786)

Confocal immunofluorescence analysis of paraformaldehyde-fixed HeLa cells, labeling MAML1 with ab155786 at 1/500 dilution.

Alpha-tubulin filaments are labeled in red.

Please note: All products are "FOR RESEARCH USE ONLY. NOT FOR USE IN DIAGNOSTIC PROCEDURES"

Our Abpromise to you: Quality guaranteed and expert technical support

- Replacement or refund for products not performing as stated on the datasheet
- Valid for 12 months from date of delivery
- Response to your inquiry within 24 hours
- We provide support in Chinese, English, French, German, Japanese and Spanish
- Extensive multi-media technical resources to help you
- We investigate all quality concerns to ensure our products perform to the highest standards

If the product does not perform as described on this datasheet, we will offer a refund or replacement. For full details of the Abpromise, please visit <https://www.abcam.com/abpromise> or contact our technical team.

Terms and conditions

- Guarantee only valid for products bought direct from Abcam or one of our authorized distributors