


### Anti-MAML3 antibody ab90593

[2 Images](#)

#### Overview

<b>Product name</b>	Anti-MAML3 antibody
<b>Description</b>	Rabbit polyclonal to MAML3
<b>Host species</b>	Rabbit
<b>Tested applications</b>	<b>Suitable for:</b> IHC-P
<b>Species reactivity</b>	<b>Reacts with:</b> Mouse, Human <b>Predicted to work with:</b> Rat, Rabbit, Horse, Guinea pig, Cow, Dog, Pig, Chimpanzee, Rhesus monkey, Gorilla, Orangutan, Xenopus tropicalis, Platypus 
<b>Immunogen</b>	Synthetic peptide, corresponding to a region between residue 1100 and the C-terminus (residue 1133) of Human MAML3 (NP_061187.2).
<b>Positive control</b>	Human breast Carcinoma, Colon Carcinoma, Lung Adenocarcinoma, Non-Small Cell Lung Cancer, Prostate Carcinoma and Mouse Teratoma
<b>General notes</b>	<p>The Life Science industry has been in the grips of a reproducibility crisis for a number of years. Abcam is leading the way in addressing this with our range of recombinant monoclonal antibodies and knockout edited cell lines for gold-standard validation. Please check that this product meets your needs before purchasing.</p> <p>If you have any questions, special requirements or concerns, please send us an inquiry and/or contact our Support team ahead of purchase. Recommended alternatives for this product can be found below, along with publications, customer reviews and Q&amp;As</p>

#### Properties

<b>Form</b>	Liquid
<b>Storage instructions</b>	Shipped at 4°C. Upon delivery aliquot and store at -20°C. Avoid freeze / thaw cycles.
<b>Storage buffer</b>	pH: 6.8 Preservative: 0.09% Sodium azide Constituents: Tris buffered saline, 0.1% BSA
<b>Purity</b>	Immunogen affinity purified
<b>Clonality</b>	Polyclonal
<b>Isotype</b>	IgG

## Applications

### The Abpromise guarantee

Our [Abpromise guarantee](#) covers the use of ab90593 in the following tested applications.

The application notes include recommended starting dilutions; optimal dilutions/concentrations should be determined by the end user.

Application	Abreviews	Notes
IHC-P		

### Application notes

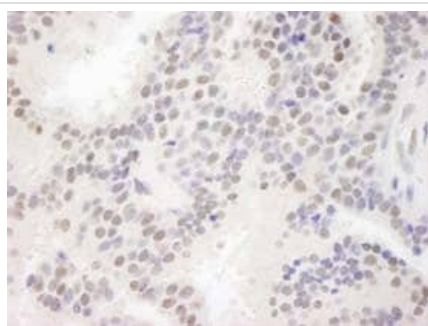
IHC-P: 1/100 - 1/500. Epitope exposure is recommended. Epitope exposure with Tris-EDTA pH 9.0 buffer will enhance staining.

Not yet tested in other applications.

Optimal dilutions/concentrations should be determined by the end user.

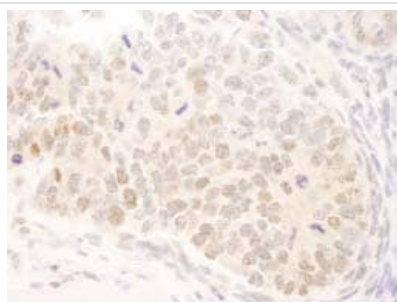
## Target

## Images



Immunohistochemistry (Formalin/PFA-fixed paraffin-embedded sections) - Anti-MAML3 antibody (ab90593)

ab90593, at 1/500 dilution, staining MAML3 in formalin-fixed, paraffin-embedded Human breast carcinoma, by Immunohistochemistry, using DAB detection.



Immunohistochemistry (Formalin/PFA-fixed paraffin-embedded sections) - Anti-MAML3 antibody (ab90593)

ab90593, at 1/100 dilution, staining MAML3 in formalin-fixed, paraffin-embedded Mouse teratoma, by Immunohistochemistry, using DAB detection.

**Please note:** All products are "FOR RESEARCH USE ONLY. NOT FOR USE IN DIAGNOSTIC PROCEDURES"

### **Our Abpromise to you: Quality guaranteed and expert technical support**

---

- Replacement or refund for products not performing as stated on the datasheet
- Valid for 12 months from date of delivery
- Response to your inquiry within 24 hours
  
- We provide support in Chinese, English, French, German, Japanese and Spanish
- Extensive multi-media technical resources to help you
- We investigate all quality concerns to ensure our products perform to the highest standards

If the product does not perform as described on this datasheet, we will offer a refund or replacement. For full details of the Abpromise, please visit <https://www.abcam.com/abpromise> or contact our technical team.

### **Terms and conditions**

---

- Guarantee only valid for products bought direct from Abcam or one of our authorized distributors