

## Product datasheet

# Anti-Mannan Binding Lectin/MBL antibody [3B6] ab23457

★★★★☆ [2 Abreviews](#) [17 References](#) [3 Images](#)

### Overview

---

|                            |   |
|----------------------------|---|
| <b>Product name</b>        | Anti-Mannan Binding Lectin/MBL antibody [3B6]   |
| <b>Description</b>         | Mouse monoclonal [3B6] to Mannan Binding Lectin/MBL   |
| <b>Host species</b>        | Mouse   |
| <b>Specificity</b>         | ab23457 is specific for MBL from human serum or plasma. In Western blotting, <a href="#">ab121075</a> reacts with Human MBL in both its oligomerized state.   |
| <b>Tested applications</b> | <b>Suitable for:</b> IHC-P  |
| <b>Species reactivity</b>  | <b>Reacts with:</b> Human   |
| <b>Immunogen</b>           | Full length native protein (purified) corresponding to Human Mannan Binding Lectin/MBL. Human MBL purified from Human donor plasma.   |
| <b>Epitope</b>             | The epitope is on the head-neck region of the MBL protein chain.  |
| <b>Positive control</b>    | Human liver, Human cancerous liver and Human brain tissues.   |
| <b>General notes</b>       | <p>The Life Science industry has been in the grips of a reproducibility crisis for a number of years. Abcam is leading the way in addressing this with our range of recombinant monoclonal antibodies and knockout edited cell lines for gold-standard validation. Please check that this product meets your needs before purchasing.</p> <p>If you have any questions, special requirements or concerns, please send us an inquiry and/or contact our Support team ahead of purchase. Recommended alternatives for this product can be found below, along with publications, customer reviews and Q&amp;As</p> |

### Properties

---

|                             |  |
|-----------------------------|--|
| <b>Form</b>                 | Liquid   |
| <b>Storage instructions</b> | Shipped at 4°C. Store at +4°C short term (1-2 weeks). Upon delivery aliquot. Store at -20°C or -80°C. Avoid freeze / thaw cycle. |
| <b>Storage buffer</b>       | pH: 7.40<br>Preservative: 0.097% Sodium azide<br>Constituents: 0.0268% PBS, 2.9% Sodium chloride                                 |
| <b>Purity</b>               | Protein A purified   |
| <b>Clonality</b>            | Monoclonal   |

|                         |             |
|-------------------------|-------------|
| <b>Clone number</b>     | 3B6         |
| <b>Myeloma</b>          | x63-Ag8.653 |
| <b>Isotype</b>          | IgG1        |
| <b>Light chain type</b> | kappa       |

## Applications

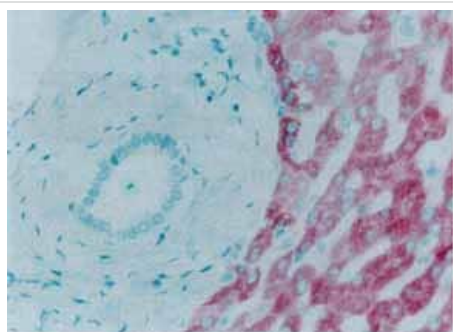
**The Abpromise guarantee** Our **Abpromise guarantee** covers the use of ab23457 in the following tested applications. The application notes include recommended starting dilutions; optimal dilutions/concentrations should be determined by the end user.

| Application | Abreviews | Notes  |
|-------------|-----------|--------|
| IHC-P       | ★★★★★ (2) | 1/250. |

## Target

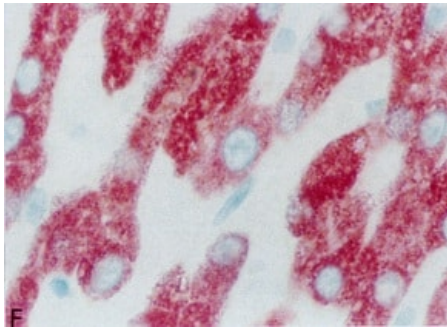
|                               |  |
|-------------------------------|--|
| <b>Function</b>               | Calcium-dependent lectin involved in innate immune defense. Binds mannose, fucose and N-acetylglucosamine on different microorganisms and activates the lectin complement pathway. Binds to late apoptotic cells, as well as to apoptotic blebs and to necrotic cells, but not to early apoptotic cells, facilitating their uptake by macrophages. May bind DNA. |
| <b>Tissue specificity</b>     | Plasma protein produced mainly in the liver.   |
| <b>Involvement in disease</b> | Note=There is an association between low levels of MBL2 and a defect of opsonization which results in susceptibility to frequent and chronic infections.   |
| <b>Sequence similarities</b>  | Contains 1 C-type lectin domain.<br>Contains 1 collagen-like domain.   |
| <b>Cellular localization</b>  | Secreted.  |

## Images



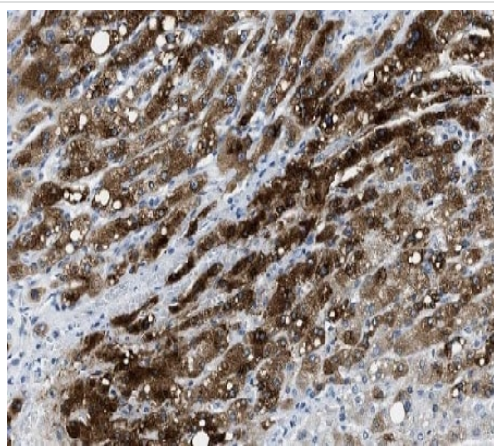
ab23457 at 1 mg/ml staining human liver by IHC-P

Immunohistochemistry (Formalin/PFA-fixed paraffin-embedded sections) - Anti-Mannan Binding Lectin/MBL antibody [3B6] (ab23457)



ab23457 staining MBL in Paraffin-embedded Human Liver tissue by Immunohistochemistry.

Immunohistochemistry (Formalin/PFA-fixed paraffin-embedded sections) - Anti-Mannan Binding Lectin/MBL antibody [3B6] (ab23457)



ab23457 staining MBL in Paraffin-embedded Human cancerous liver tissue by Immunohistochemistry.

Immunohistochemistry (Formalin/PFA-fixed paraffin-embedded sections) - Anti-Mannan Binding Lectin/MBL antibody [3B6] (ab23457)

**Please note:** All products are "FOR RESEARCH USE ONLY. NOT FOR USE IN DIAGNOSTIC PROCEDURES"

### **Our Abpromise to you: Quality guaranteed and expert technical support**

---

- Replacement or refund for products not performing as stated on the datasheet
- Valid for 12 months from date of delivery
- Response to your inquiry within 24 hours
  
- We provide support in Chinese, English, French, German, Japanese and Spanish
- Extensive multi-media technical resources to help you
- We investigate all quality concerns to ensure our products perform to the highest standards

If the product does not perform as described on this datasheet, we will offer a refund or replacement. For full details of the Abpromise, please visit <https://www.abcam.com/abpromise> or contact our technical team.

## Terms and conditions

---

- Guarantee only valid for products bought direct from Abcam or one of our authorized distributors