

Anti-Mannan Binding Lectin/MBL antibody ab203303

[2 References](#) [3 Images](#)

Overview

Product name	Anti-Mannan Binding Lectin/MBL antibody
Description	Rabbit polyclonal to Mannan Binding Lectin/MBL
Host species	Rabbit
Tested applications	Suitable for: IHC-P
Species reactivity	Reacts with: Rat, Human
Immunogen	Synthetic peptide within Human Mannan Binding Lectin/MBL aa 1-100 conjugated to keyhole limpet haemocyanin. The exact immunogen sequence used to generate this antibody is proprietary information. If additional detail on the immunogen is needed to determine the suitability of the antibody for your needs, please contact our Scientific Support team to discuss your requirements. Database link: P11226

 [Run BLAST with](#)

 [Run BLAST with](#)

General notes

The Life Science industry has been in the grips of a reproducibility crisis for a number of years. Abcam is leading the way in addressing this with our range of recombinant monoclonal antibodies and knockout edited cell lines for gold-standard validation. Please check that this product meets your needs before purchasing.

If you have any questions, special requirements or concerns, please send us an inquiry and/or contact our Support team ahead of purchase. Recommended alternatives for this product can be found below, along with publications, customer reviews and Q&As

Properties

Form	Liquid
Storage instructions	Shipped at 4°C. Store at +4°C short term (1-2 weeks). Upon delivery aliquot. Store at -20°C long term. Avoid freeze / thaw cycle.
Storage buffer	pH: 7.40 Preservative: 0.02% Proclin 300 Constituents: 50% Glycerol (glycerin, glycerine), 1% BSA, 48.98% TBS, 1X
	Aqueous buffered solution
Purity	Protein A purified
Clonality	Polyclonal

Isotype

IgG

Applications

The Abpromise guarantee

Our **Abpromise guarantee** covers the use of ab203303 in the following tested applications.

The application notes include recommended starting dilutions; optimal dilutions/concentrations should be determined by the end user.

Application	Abreviews	Notes
IHC-P		1/100 - 1/500. When using a fluorescent probe the recommended dilution is 1/50 – 1/200.

Target

Function

Calcium-dependent lectin involved in innate immune defense. Binds mannose, fucose and N-acetylglucosamine on different microorganisms and activates the lectin complement pathway. Binds to late apoptotic cells, as well as to apoptotic blebs and to necrotic cells, but not to early apoptotic cells, facilitating their uptake by macrophages. May bind DNA.

Tissue specificity

Plasma protein produced mainly in the liver.

Involvement in disease

Note=There is an association between low levels of MBL2 and a defect of opsonization which results in susceptibility to frequent and chronic infections.

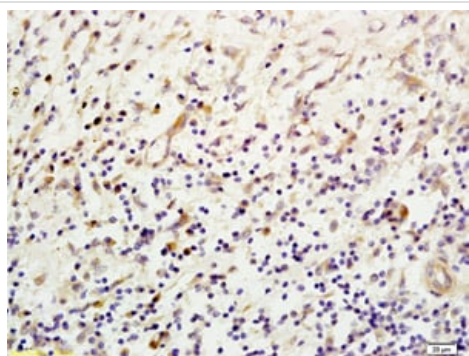
Sequence similarities

Contains 1 C-type lectin domain.
Contains 1 collagen-like domain.

Cellular localization

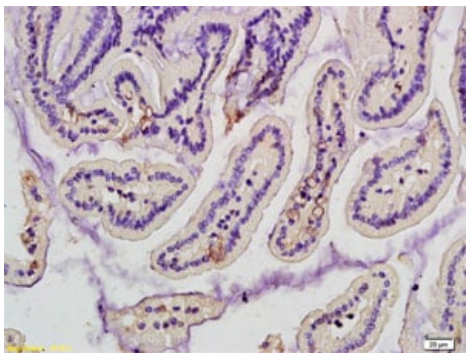
Secreted.

Images



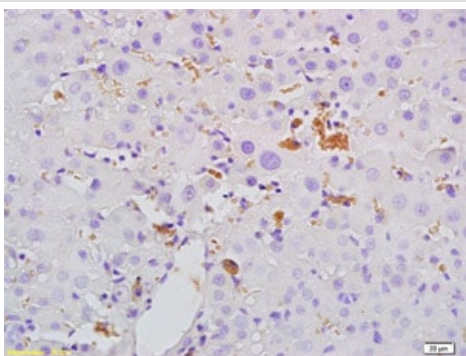
Immunohistochemical analysis of formalin-fixed, paraffin-embedded Human esophageal carcinoma tissue labeling Mannan Binding Lectin/MBL with ab203303 at 1/200 dilution followed by conjugation to the secondary antibody and DAB staining.

Immunohistochemistry (Formalin/PFA-fixed paraffin-embedded sections) - Anti-Mannan Binding Lectin/MBL antibody (ab203303)



Immunohistochemistry (Formalin/PFA-fixed paraffin-embedded sections) - Anti-Mannan Binding Lectin/MBL antibody (ab203303)

Immunohistochemical analysis of formalin-fixed, paraffin-embedded Rat intestine tissue labeling Mannan Binding Lectin/MBL with ab203303 at 1/200 dilution followed by conjugation to the secondary antibody and DAB staining.



Immunohistochemistry (Formalin/PFA-fixed paraffin-embedded sections) - Anti-Mannan Binding Lectin/MBL antibody (ab203303)

Immunohistochemical analysis of formalin-fixed, paraffin-embedded Rat liver tissue labeling Mannan Binding Lectin/MBL with ab203303 at 1/200 dilution followed by conjugation to the secondary antibody and DAB staining.

Please note: All products are "FOR RESEARCH USE ONLY. NOT FOR USE IN DIAGNOSTIC PROCEDURES"

Our Abpromise to you: Quality guaranteed and expert technical support

- Replacement or refund for products not performing as stated on the datasheet
- Valid for 12 months from date of delivery
- Response to your inquiry within 24 hours
- We provide support in Chinese, English, French, German, Japanese and Spanish
- Extensive multi-media technical resources to help you
- We investigate all quality concerns to ensure our products perform to the highest standards

If the product does not perform as described on this datasheet, we will offer a refund or replacement. For full details of the Abpromise, please visit <https://www.abcam.com/abpromise> or contact our technical team.

Terms and conditions

- Guarantee only valid for products bought direct from Abcam or one of our authorized distributors