

Product datasheet

Anti-Map17 antibody [EPR10372] ab156014

Recombinant RabMAb

[5 References](#) [8 Images](#)

Overview

Product name	Anti-Map17 antibody [EPR10372]
Description	Rabbit monoclonal [EPR10372] to Map17
Host species	Rabbit
Tested applications	Suitable for: WB, IHC-P Unsuitable for: ICC/IF or IP
Species reactivity	Reacts with: Human
Immunogen	Recombinant fragment corresponding to Human Map17.
Positive control	Human fetal kidney lysate; Human breast carcinoma and lung carcinoma tissues.
General notes	<p>This product is a recombinant monoclonal antibody, which offers several advantages including:</p> <ul style="list-style-type: none">- High batch-to-batch consistency and reproducibility- Improved sensitivity and specificity- Long-term security of supply- Animal-free production <p>For more information see here.</p> <p>Our RabMAb[®] technology is a patented hybridoma-based technology for making rabbit monoclonal antibodies. For details on our patents, please refer to RabMAb[®] patents.</p> <p>Mouse, Rat: We have preliminary internal testing data to indicate this antibody may not react with these species. Please contact us for more information.</p>

Properties

Form	Liquid
Storage instructions	Shipped at 4°C. Store at -20°C.
Storage buffer	pH: 7.2 Preservative: 0.01% Sodium azide Constituents: 9% PBS, 40% Glycerol (glycerin, glycerine), 0.05% BSA, 50% Tissue culture supernatant
Purity	Protein A purified
Clonality	Monoclonal

Clone number EPR10372

Isotype IgG

Applications

The Abpromise guarantee Our **Abpromise guarantee** covers the use of ab156014 in the following tested applications.

The application notes include recommended starting dilutions; optimal dilutions/concentrations should be determined by the end user.

Application	Abreviews	Notes
WB		1/1000 - 1/10000. Predicted molecular weight: 12 kDa.
IHC-P		1/100 - 1/250. Perform heat mediated antigen retrieval with citrate buffer pH 6 before commencing with IHC staining protocol.

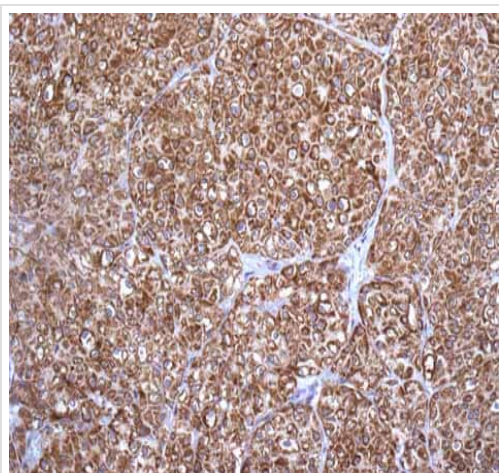
Application notes Is unsuitable for ICC/IF or IP.

Target

Relevance MAP17 is a 17 kDa membrane-associated protein expressed abundantly in carcinomas arising from kidney, colon, lung, and breast. In normal tissues it is expressed in significant amounts in the kidney.

Cellular localization Plasma membrane

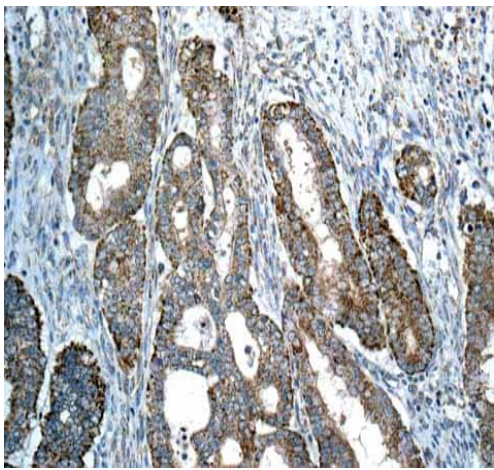
Images



ab156014 showing +ve staining in Human urinary bladder transitional carcinoma.

Perform heat mediated antigen retrieval with citrate buffer pH 6 before commencing with IHC staining protocol.

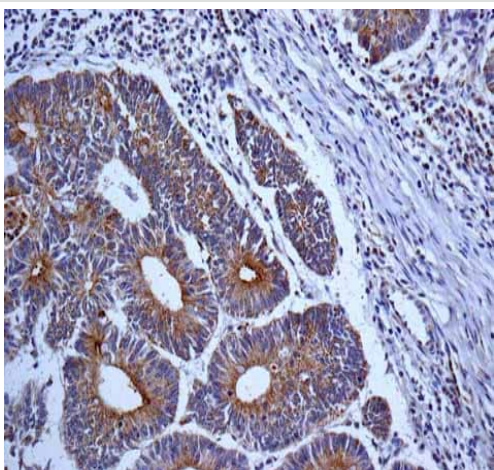
Immunohistochemistry (Formalin/PFA-fixed paraffin-embedded sections) - Anti-Map17 antibody [EPR10372] (ab156014)



Immunohistochemistry (Formalin/PFA-fixed paraffin-embedded sections) - Anti-Map17 antibody [EPR10372] (ab156014)

ab156014 showing +ve staining in Human ovarian carcinoma.

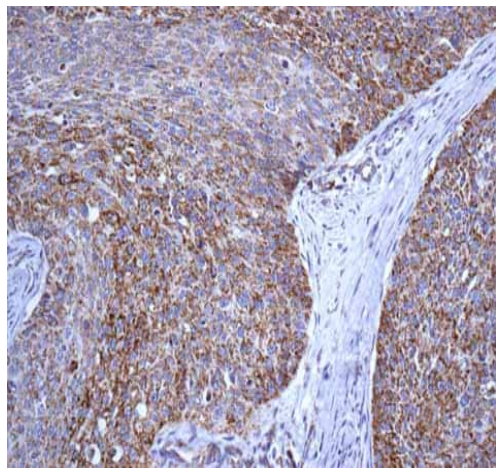
Perform heat mediated antigen retrieval with citrate buffer pH 6 before commencing with IHC staining protocol.



Immunohistochemistry (Formalin/PFA-fixed paraffin-embedded sections) - Anti-Map17 antibody [EPR10372] (ab156014)

ab156014 showing +ve staining in Human colonic adenocarcinoma.

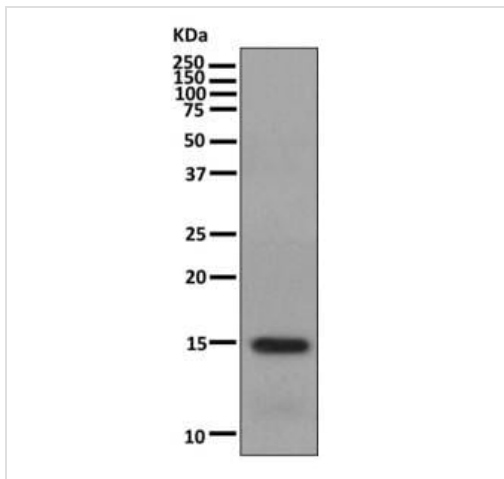
Perform heat mediated antigen retrieval with citrate buffer pH 6 before commencing with IHC staining protocol.



Immunohistochemistry (Formalin/PFA-fixed paraffin-embedded sections) - Anti-Map17 antibody [EPR10372] (ab156014)

ab156014 showing +ve staining in Human cervical carcinoma.

Perform heat mediated antigen retrieval with citrate buffer pH 6 before commencing with IHC staining protocol.



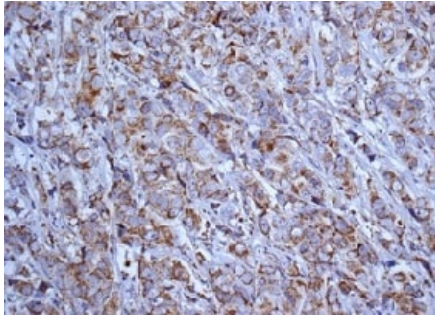
Western blot - Anti-Map17 antibody [EPR10372] (ab156014)

Anti-Map17 antibody [EPR10372] (ab156014) at 1/1000 dilution + Human fetal kidney tissue lysate at 10 μ g

Secondary

HRP labelled goat anti-rabbit at 1/2000 dilution

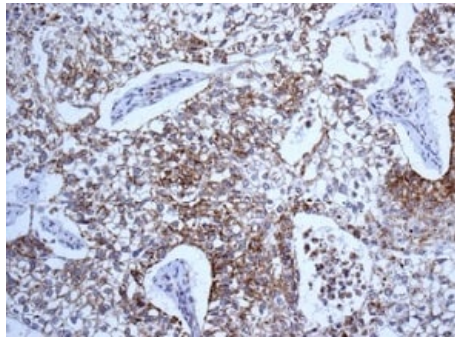
Predicted band size: 12 kDa



Immunohistochemistry (Formalin/PFA-fixed paraffin-embedded sections) - Anti-Map17 antibody [EPR10372] (ab156014)

Immunohistochemical analysis of paraffin-embedded Human breast carcinoma tissue labeling Map17 with ab156014 at 1/100 dilution.

Perform heat mediated antigen retrieval with citrate buffer pH 6 before commencing with IHC staining protocol.




Immunohistochemistry (Formalin/PFA-fixed paraffin-embedded sections) - Anti-Map17 antibody [EPR10372] (ab156014)


Immunohistochemical analysis of paraffin-embedded Human lung carcinoma tissue labeling Map17 with ab156014 at 1/100 dilution.

Perform heat mediated antigen retrieval with citrate buffer pH 6 before commencing with IHC staining protocol.

Why choose a recombinant antibody?

- 

Research with confidence
Consistent and reproducible results
- 

Long-term and scalable supply
Recombinant technology
- 

Success from the first experiment
Confirmed specificity
- 

Ethical standards compliant
Animal-free production

Anti-Map17 antibody [EPR10372] (ab156014)

Our Abpromise to you: Quality guaranteed and expert technical support

- Replacement or refund for products not performing as stated on the datasheet
- Valid for 12 months from date of delivery
- Response to your inquiry within 24 hours

- We provide support in Chinese, English, French, German, Japanese and Spanish
- Extensive multi-media technical resources to help you
- We investigate all quality concerns to ensure our products perform to the highest standards

If the product does not perform as described on this datasheet, we will offer a refund or replacement. For full details of the Abpromise, please visit <https://www.abcam.com/abpromise> or contact our technical team.

Terms and conditions

- Guarantee only valid for products bought direct from Abcam or one of our authorized distributors