

# Anti-MAP1B antibody ab154333

2 Images

### Overview

<b>Product name</b>	Anti-MAP1B antibody
<b>Description</b>	Rabbit polyclonal to MAP1B
<b>Host species</b>	Rabbit
<b>Tested applications</b>	<b>Suitable for:</b> WB
<b>Species reactivity</b>	<b>Reacts with:</b> Mouse, Human
<b>Immunogen</b>	Synthetic peptide, corresponding to a region within amino acids 1824-1878 of Human MAP1B (UniProt: P46821).
<b>Positive control</b>	U-87 MG, P4.5 Mouse brain lysate, NT2D1, IMR32 and Neuro-2a whole cell lysates.
<b>General notes</b>	<p>The Life Science industry has been in the grips of a reproducibility crisis for a number of years. Abcam is leading the way in addressing this with our range of recombinant monoclonal antibodies and knockout edited cell lines for gold-standard validation. Please check that this product meets your needs before purchasing.</p> <p>If you have any questions, special requirements or concerns, please send us an inquiry and/or contact our Support team ahead of purchase. Recommended alternatives for this product can be found below, along with publications, customer reviews and Q&amp;As</p>

### Properties

<b>Form</b>	Liquid
<b>Storage instructions</b>	Shipped at 4°C. Upon delivery aliquot. Store at -20°C or -80°C. Avoid freeze / thaw cycle.
<b>Storage buffer</b>	<p>pH: 7.00</p> <p>Preservative: 0.025% Proclin 300</p> <p>Constituents: 79% PBS, 20% Glycerol (glycerin, glycerine)</p>
<b>Purity</b>	Immunogen affinity purified
<b>Clonality</b>	Polyclonal
<b>Isotype</b>	IgG

### Applications

**The Abpromise guarantee** Our **Abpromise guarantee** covers the use of ab154333 in the following tested applications.

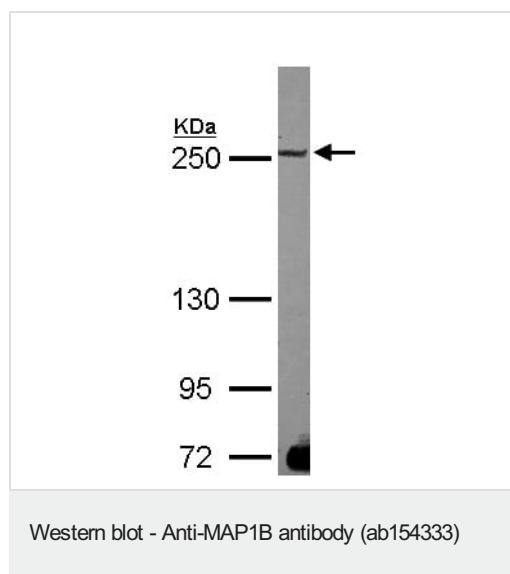
The application notes include recommended starting dilutions; optimal dilutions/concentrations should be determined by the end user.

Application	Abreviews	Notes
WB		1/500 - 1/3000. Predicted molecular weight: 271 kDa.

## Target

<b>Function</b>	Facilitates tyrosination of alpha-tubulin in neuronal microtubules (By similarity). Phosphorylated MAP1B may play a role in the cytoskeletal changes that accompany neurite extension. Possibly MAP1B binds to at least two tubulin subunits in the polymer, and this bridging of subunits might be involved in nucleating microtubule polymerization and in stabilizing microtubules. Acts as a positive cofactor in DAPK1-mediated autophagic vesicle formation and membrane blebbing.
<b>Sequence similarities</b>	Belongs to the MAP1 family.
<b>Domain</b>	Has a highly basic region with many copies of the sequence KKEE and KKEIV, repeated but not at fixed intervals, which is responsible for the binding of MAP1B to microtubules.
<b>Post-translational modifications</b>	LC1 is generated from MAP1B by proteolytic processing. S-nitrosylation at Cys-2464 enhances interaction with microtubules, and may act as an effector modification for neuronal nitric oxide synthase control of growth-cone size, growth-cone collapse and axon retraction.
<b>Cellular localization</b>	Cytoplasm, cytoskeleton. Cytoplasm. Cell junction, synapse. Cell projection, dendritic spine. Colocalizes with DAPK1 in the microtubules and cortical actin fibers.

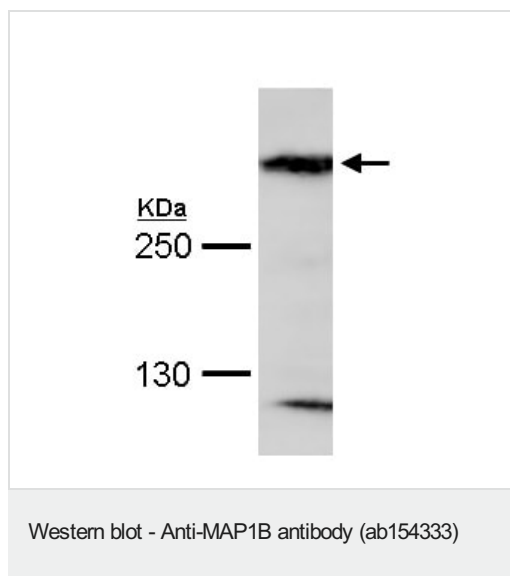
## Images



Anti-MAP1B antibody (ab154333) at 1/1000 dilution + U-87 MG whole cell lysate at 30 µg

**Predicted band size:** 271 kDa

5% SDS PAGE



Anti-MAP1B antibody (ab154333) at 1/1000 dilution + P4.5 Mouse brain lysate at 15 µg

**Predicted band size:** 271 kDa

5% SDS PAGE

**Please note:** All products are "FOR RESEARCH USE ONLY. NOT FOR USE IN DIAGNOSTIC PROCEDURES"

#### Our Abpromise to you: Quality guaranteed and expert technical support

---

- Replacement or refund for products not performing as stated on the datasheet
- Valid for 12 months from date of delivery
- Response to your inquiry within 24 hours
- We provide support in Chinese, English, French, German, Japanese and Spanish
- Extensive multi-media technical resources to help you
- We investigate all quality concerns to ensure our products perform to the highest standards

If the product does not perform as described on this datasheet, we will offer a refund or replacement. For full details of the Abpromise, please visit <https://www.abcam.com/abpromise> or contact our technical team.

#### Terms and conditions

---

- Guarantee only valid for products bought direct from Abcam or one of our authorized distributors