

Product datasheet

Anti-MAP2K1IP1 antibody [Y130] ab32134


KO VALIDATED

Recombinant

RabMAb

[4 References](#) [6 Images](#)

Overview

Product name	Anti-MAP2K1IP1 antibody [Y130]
Description	Rabbit monoclonal [Y130] to MAP2K1IP1
Host species	Rabbit
Specificity	ab32134 recognises MP1 (MEK partner-1).
Tested applications	Suitable for: WB, IHC-P, ICC/IF Unsuitable for: Flow Cyt
Species reactivity	Reacts with: Human Predicted to work with: Mouse 
Immunogen	Synthetic peptide. This information is proprietary to Abcam and/or its suppliers.
Positive control	WB: HeLa and A431 cell lysates. IHC-P: Human breast carcinoma tissue. ICC/IF: MCF7 cells.
General notes	<p>This product is a recombinant monoclonal antibody, which offers several advantages including:</p> <ul style="list-style-type: none"> - High batch-to-batch consistency and reproducibility - Improved sensitivity and specificity - Long-term security of supply - Animal-free production <p>For more information see here.</p> <p>Our RabMAb[®] technology is a patented hybridoma-based technology for making rabbit monoclonal antibodies. For details on our patents, please refer to RabMAb[®] patents.</p> <p>Rat: We have preliminary internal testing data to indicate this antibody may not react with this species. Please contact us for more information.</p>

Properties

Form	Liquid
Storage instructions	Shipped at 4°C. Upon delivery aliquot and store at -20°C. Avoid freeze / thaw cycles.
Storage buffer	pH: 7.20 Preservative: 0.01% Sodium azide Constituents: 49% PBS, 50% Glycerol (glycerin, glycerine), 0.05% BSA
Purity	Protein A purified

Clonality	Monoclonal
Clone number	Y130
Isotype	IgG

Applications

The Abpromise guarantee Our **Abpromise guarantee** covers the use of ab32134 in the following tested applications. The application notes include recommended starting dilutions; optimal dilutions/concentrations should be determined by the end user.

Application	Abreviews	Notes
WB		1/10000 - 1/50000. Detects a band of approximately 14 kDa.
IHC-P		Use at an assay dependent concentration. Perform heat mediated antigen retrieval with citrate buffer pH 6 before commencing with IHC staining protocol.
ICC/IF		1/100.

Application notes Is unsuitable for Flow Cyt.

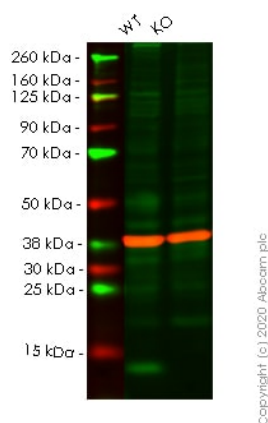
Target

Function As part of the Ragulator complex it is involved in amino acid sensing and activation of mTORC1, a signaling complex promoting cell growth in response to growth factors, energy levels, and amino acids. Activated by amino acids through a mechanism involving the lysosomal V-ATPase, the Ragulator functions as a guanine nucleotide exchange factor activating the small GTPases Rag. Activated Ragulator and Rag GTPases function as a scaffold recruiting mTORC1 to lysosomes where it is in turn activated. Adapter protein that enhances the efficiency of the MAP kinase cascade facilitating the activation of MAPK2.

Sequence similarities Belongs to the LAMTOR3 family.

Cellular localization Late endosome membrane.

Images



Western blot - Anti-MAP2K1IP1 antibody [Y130]
(ab32134)

All lanes : Anti-MAP2K1IP1 antibody [Y130] (ab32134) at 1/50000 dilution

Lane 1 : Wild-type HeLa cell lysate

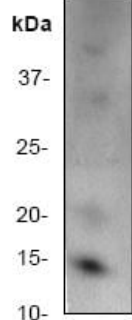
Lane 2 : MAP2K1IP1 knockout HeLa cell lysate

Lysates/proteins at 20 µg per lane.

Performed under reducing conditions.

Lanes 1-2: Merged signal (red and green). Green - ab32134 observed at 14 kDa. Red - loading control **ab8245** observed at 37 kDa.

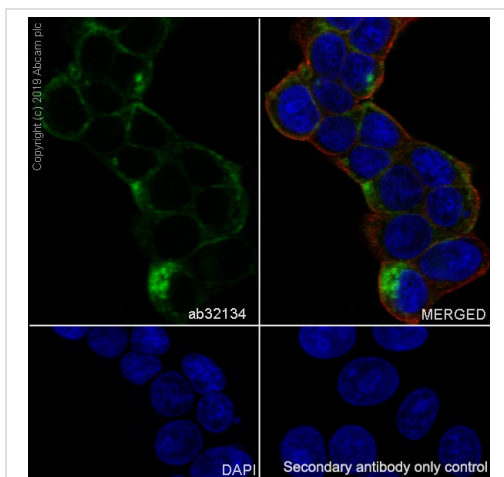
ab32134 Anti-MAP2K1IP1 antibody [Y130] was shown to specifically react with MAP2K1IP1 in wild-type HeLa cells. Loss of signal was observed when knockout cell line **ab265624** (knockout cell lysate **ab258021**) was used. Wild-type and MAP2K1IP1 knockout samples were subjected to SDS-PAGE. ab32134 and Anti-GAPDH antibody [6C5] - Loading Control (**ab8245**) were incubated overnight at 4°C at 1 in 50000 dilution and 1 in 20000 dilution respectively. Blots were developed with Goat anti-Rabbit IgG H&L (IRDye® 800CW) preadsorbed (**ab216773**) and Goat anti-Mouse IgG H&L (IRDye® 680RD) preadsorbed (**ab216776**) secondary antibodies at 1 in 20000 dilution for 1 hour at room temperature before imaging.



Western blot - Anti-MAP2K1IP1 antibody [Y130]
(ab32134)

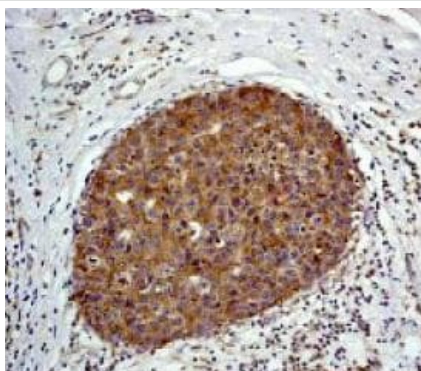
Anti-MAP2K1IP1 antibody [Y130] (ab32134) at 1/50000 dilution + A431 cell lysate

Observed band size: 14 kDa



Immunocytochemistry/ Immunofluorescence - Anti-MAP2K1IP1 antibody [Y130] (ab32134)

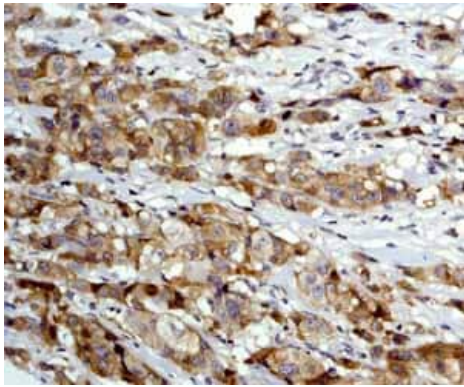
Immunocytochemistry/ Immunofluorescence analysis of MCF7 (human breast adenocarcinoma epithelial cell) cells labeling MAP2K1IP1 with purified ab32134 at 1/100 dilution (10 µg/mL). Cells were fixed in 100% Methanol and permeabilized with None. Cells were counterstained with **ab195889** Anti-alpha Tubulin antibody [DM1A] - Microtubule Marker (Alexa Fluor® 594) 1/200 (2.5 µg/mL). Goat anti rabbit IgG (Alexa Fluor® 488, **ab150077**) was used as the secondary antibody at 1/1000 (2 µg/mL) dilution. DAPI (blue) was used as nuclear counterstain. **ab195889** Anti-alpha Tubulin antibody [DM1A] - Microtubule Marker (Alexa Fluor® 594) 1/200 (2.5 µg/mL) was used as the secondary antibody only control.



Immunohistochemistry (Formalin/PFA-fixed paraffin-embedded sections) - Anti-MAP2K1IP1 antibody [Y130] (ab32134)

ab32134, staining human breast carcinoma by immunohistochemistry, Paraffin embedded tissue

Perform heat mediated antigen retrieval with citrate buffer pH 6 before commencing with IHC staining protocol.

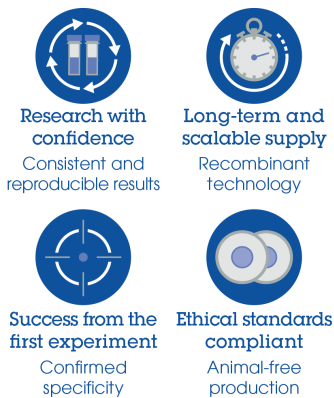


Immunohistochemistry (Formalin/PFA-fixed paraffin-embedded sections) - Anti-MAP2K1IP1 antibody [Y130] (ab32134)

ab32134 showing positive staining in Breast carcinoma tissue.

Perform heat mediated antigen retrieval with citrate buffer pH 6 before commencing with IHC staining protocol.

Why choose a recombinant antibody?



Anti-MAP2K1IP1 antibody [Y130] (ab32134)

Please note: All products are "FOR RESEARCH USE ONLY. NOT FOR USE IN DIAGNOSTIC PROCEDURES"

Our Abpromise to you: Quality guaranteed and expert technical support

- Replacement or refund for products not performing as stated on the datasheet
- Valid for 12 months from date of delivery
- Response to your inquiry within 24 hours
- We provide support in Chinese, English, French, German, Japanese and Spanish
- Extensive multi-media technical resources to help you
- We investigate all quality concerns to ensure our products perform to the highest standards

If the product does not perform as described on this datasheet, we will offer a refund or replacement. For full details of the Abpromise, please visit <https://www.abcam.com/abpromise> or contact our technical team.

Terms and conditions

- Guarantee only valid for products bought direct from Abcam or one of our authorized distributors