


Anti-MAP3K8/COT antibody ab196751

1 Image

Overview

Product name	Anti-MAP3K8/COT antibody
Description	Rabbit polyclonal to MAP3K8/COT
Host species	Rabbit
Tested applications	Suitable for: IHC-P
Species reactivity	Reacts with: Human Predicted to work with: Mouse, Rat 
Immunogen	Synthetic peptide within Human MAP3K8/COT (C terminal). The exact sequence is proprietary. [The non-phosphopeptide was derived from around the phosphorylation site of serine 400 (C-Q-S(p)-L-D).] Database link: P41279
Positive control	Insulin treated COLO cell lysate; Human brain tissue.
General notes	<p>The Life Science industry has been in the grips of a reproducibility crisis for a number of years. Abcam is leading the way in addressing this with our range of recombinant monoclonal antibodies and knockout edited cell lines for gold-standard validation. Please check that this product meets your needs before purchasing.</p> <p>If you have any questions, special requirements or concerns, please send us an inquiry and/or contact our Support team ahead of purchase. Recommended alternatives for this product can be found below, along with publications, customer reviews and Q&As</p>

Properties

Form	Liquid
Storage instructions	Shipped at 4°C. Store at +4°C short term (1-2 weeks). Upon delivery aliquot. Store at -20°C long term. Avoid freeze / thaw cycle.
Storage buffer	pH: 7.40 Preservative: 0.02% Sodium azide Constituents: 0.87% Sodium chloride, 50% Glycerol (glycerin, glycerine), 49% PBS PBS is without Mg^{2+} and Ca^{2+} .
Purity	Immunogen affinity purified
Purification notes	ab196751 was affinity-purified from rabbit antiserum by affinity-chromatography using epitope-

	specific immunogen.
Clonality	Polyclonal
Isotype	IgG

Applications

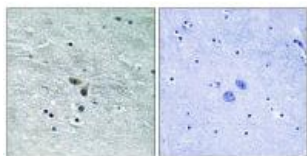
The Abpromise guarantee Our **Abpromise guarantee** covers the use of ab196751 in the following tested applications. The application notes include recommended starting dilutions; optimal dilutions/concentrations should be determined by the end user.

Application	Abreviews	Notes
IHC-P		1/50 - 1/100.

Target

Function	Required for TLR4 activation of the MEK/ERK pathway. Able to activate NF-kappa-B 1 by stimulating proteasome-mediated proteolysis of NF-kappa-B 1/p105. Plays a role in the cell cycle. The longer form has some transforming activity, although it is much weaker than the activated cot oncoprotein.
Tissue specificity	Expressed in several normal tissues and human tumor-derived cell lines.
Sequence similarities	Belongs to the protein kinase superfamily. STE Ser/Thr protein kinase family. MAP kinase kinase kinase subfamily. Contains 1 protein kinase domain.
Developmental stage	Isoform 1 is activated specifically during the S and G2/M phases of the cell cycle.
Post-translational modifications	Autophosphorylated. Isoform 1 undergoes phosphorylation mainly on Ser residues, and isoform 2 on both Ser and Thr residues.
Cellular localization	Cytoplasm.

Images



Immunohistochemical analysis of paraffin-embedded Human brain tissue labeling MAP3K8/COT with ab196751 at a 1/50 dilution. The image on the right was treated with the synthesized peptide.

Immunohistochemistry (Formalin/PFA-fixed paraffin-embedded sections) - Anti-MAP3K8/COT antibody (ab196751)

Please note: All products are "FOR RESEARCH USE ONLY. NOT FOR USE IN DIAGNOSTIC PROCEDURES"

Our Abpromise to you: Quality guaranteed and expert technical support

- Replacement or refund for products not performing as stated on the datasheet
- Valid for 12 months from date of delivery
- Response to your inquiry within 24 hours
- We provide support in Chinese, English, French, German, Japanese and Spanish
- Extensive multi-media technical resources to help you
- We investigate all quality concerns to ensure our products perform to the highest standards

If the product does not perform as described on this datasheet, we will offer a refund or replacement. For full details of the Abpromise, please visit <https://www.abcam.com/abpromise> or contact our technical team.

Terms and conditions

- Guarantee only valid for products bought direct from Abcam or one of our authorized distributors