


## Product datasheet

# Anti-MAP3K9 antibody ab154506

[2 References](#) [2 Images](#)

### Overview

---

<b>Product name</b>	Anti-MAP3K9 antibody
<b>Description</b>	Rabbit polyclonal to MAP3K9
<b>Host species</b>	Rabbit
<b>Tested applications</b>	<b>Suitable for:</b> WB, ICC/IF
<b>Species reactivity</b>	<b>Reacts with:</b> Human <b>Predicted to work with:</b> Mouse 
<b>Immunogen</b>	Recombinant fragment corresponding to a region within amino acids 198-433 of Human MAP3K9 (P80192).
<b>Positive control</b>	A431, H1299, HeLa, HepG2, MOLT4 and Raji whole cell lysates. A431 cells.
<b>General notes</b>	<p>The Life Science industry has been in the grips of a reproducibility crisis for a number of years. Abcam is leading the way in addressing this with our range of recombinant monoclonal antibodies and knockout edited cell lines for gold-standard validation. Please check that this product meets your needs before purchasing.</p> <p>If you have any questions, special requirements or concerns, please send us an inquiry and/or contact our Support team ahead of purchase. Recommended alternatives for this product can be found below, along with publications, customer reviews and Q&amp;As</p>

### Properties

---

<b>Form</b>	Liquid
<b>Storage instructions</b>	Shipped at 4°C. Upon delivery aliquot and store at -20°C or -80°C. Avoid repeated freeze / thaw cycles.
<b>Storage buffer</b>	pH: 7.00 Preservative: 0.01% Thimerosal (merthiolate) Constituents: 1.21% Tris, 0.75% Glycine, 20% Glycerol (glycerin, glycerine)
<b>Purity</b>	Immunogen affinity purified
<b>Clonality</b>	Polyclonal
<b>Isotype</b>	IgG

### Applications

## The Abpromise guarantee

Our **Abpromise guarantee** covers the use of ab154506 in the following tested applications.

The application notes include recommended starting dilutions; optimal dilutions/concentrations should be determined by the end user.

Application	Abreviews	Notes
WB		1/500 - 1/3000. Predicted molecular weight: 122 kDa.
ICC/IF		1/100 - 1/1000.

## Target

### Function

Activates the JUN N-terminal pathway.

### Tissue specificity

Expressed in epithelial tumor cell lines of colonic, breast and esophageal origin.

### Sequence similarities

Belongs to the protein kinase superfamily. STE Ser/Thr protein kinase family. MAP kinase kinase kinase subfamily.

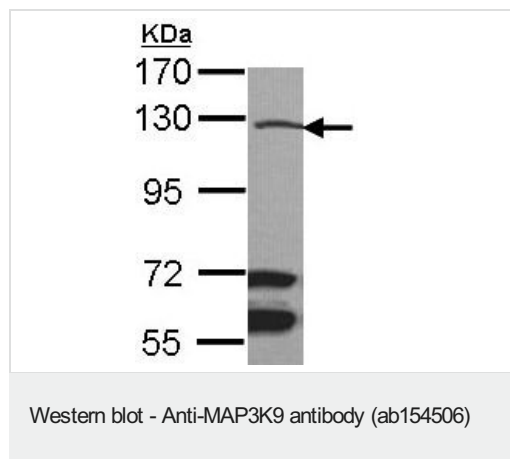
Contains 1 protein kinase domain.

Contains 1 SH3 domain.

### Post-translational modifications

Autophosphorylation on serine and threonine residues within the activation loop plays a role in enzyme activation. Thr-312 is likely to be the main autophosphorylation site.

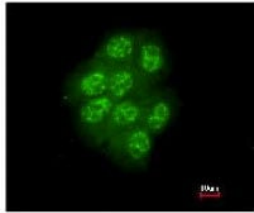
## Images



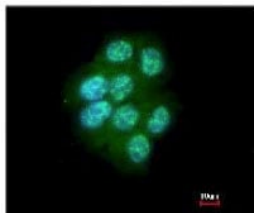
Anti-MAP3K9 antibody (ab154506) at 1/500 dilution + A431 whole cell lysate at 30  $\mu$ g

**Predicted band size:** 122 kDa

7.5% SDS PAGE



Immunofluorescent analysis of paraformaldehyde-fixed A431 cells labeling MAP3K9 with ab154506 at 1/200 dilution. Image at the bottom merged with DNA probe.



Immunocytochemistry/ Immunofluorescence - Anti-MAP3K9 antibody (ab154506)

**Please note:** All products are "FOR RESEARCH USE ONLY. NOT FOR USE IN DIAGNOSTIC PROCEDURES"

### Our Abpromise to you: Quality guaranteed and expert technical support

---

- Replacement or refund for products not performing as stated on the datasheet
- Valid for 12 months from date of delivery
- Response to your inquiry within 24 hours
- We provide support in Chinese, English, French, German, Japanese and Spanish
- Extensive multi-media technical resources to help you
- We investigate all quality concerns to ensure our products perform to the highest standards

If the product does not perform as described on this datasheet, we will offer a refund or replacement. For full details of the Abpromise, please visit <https://www.abcam.com/abpromise> or contact our technical team.

### Terms and conditions

---

- Guarantee only valid for products bought direct from Abcam or one of our authorized distributors