


Anti-MAP3K9 antibody ab228752

[4 References](#) [2 Images](#)

Overview

| | |
|----------------------------|---|
| Product name | Anti-MAP3K9 antibody |
| Description | Rabbit polyclonal to MAP3K9 |
| Host species | Rabbit |
| Tested applications | Suitable for: WB, ICC/IF |
| Species reactivity | Reacts with: Human Predicted to work with: Mouse, Rat, Cow  |
| Immunogen | Recombinant fragment within Human MAP3K9 (internal sequence). The exact sequence is proprietary. Database link: P80192 |
| Positive control | WB: Jurkat, Raji and NCI-H1299 whole cell extracts. ICC/IF: A431 cells. |
| General notes | <p>The Life Science industry has been in the grips of a reproducibility crisis for a number of years. Abcam is leading the way in addressing this with our range of recombinant monoclonal antibodies and knockout edited cell lines for gold-standard validation. Please check that this product meets your needs before purchasing.</p> <p>If you have any questions, special requirements or concerns, please send us an inquiry and/or contact our Support team ahead of purchase. Recommended alternatives for this product can be found below, along with publications, customer reviews and Q&As</p> |

Properties

| | |
|-----------------------------|---|
| Form | Liquid |
| Storage instructions | Shipped at 4°C. Store at +4°C short term (1-2 weeks). Upon delivery aliquot. Store at -20°C long term. Avoid freeze / thaw cycle. |
| Storage buffer | pH: 7.00 Preservative: 0.01% Thimerosal (merthiolate) Constituents: 79.99% PBS, 20% Glycerol (glycerin, glycerine) |
| Purity | Immunogen affinity purified |
| Clonality | Polyclonal |
| Isotype | IgG |

Applications

The Abpromise guarantee

Our **Abpromise guarantee** covers the use of ab228752 in the following tested applications.

The application notes include recommended starting dilutions; optimal dilutions/concentrations should be determined by the end user.

| Application | Abreviews | Notes |
|-------------|-----------|--|
| WB | | 1/500 - 1/3000. Predicted molecular weight: 122 kDa. |
| ICC/IF | | 1/100 - 1/1000. |

Target

Function

Activates the JUN N-terminal pathway.

Tissue specificity

Expressed in epithelial tumor cell lines of colonic, breast and esophageal origin.

Sequence similarities

Belongs to the protein kinase superfamily. STE Ser/Thr protein kinase family. MAP kinase kinase kinase subfamily.

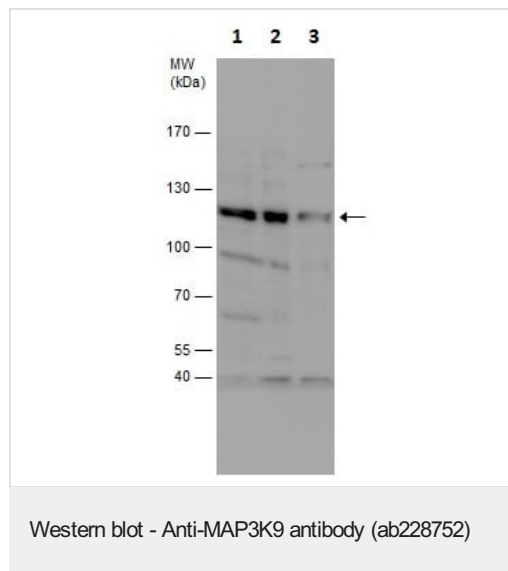
Contains 1 protein kinase domain.

Contains 1 SH3 domain.

Post-translational modifications

Autophosphorylation on serine and threonine residues within the activation loop plays a role in enzyme activation. Thr-312 is likely to be the main autophosphorylation site.

Images



All lanes : Anti-MAP3K9 antibody (ab228752) at 1/1000 dilution

Lane 1 : Jurkat (human T cell leukemia cell line from peripheral blood) whole cell extract

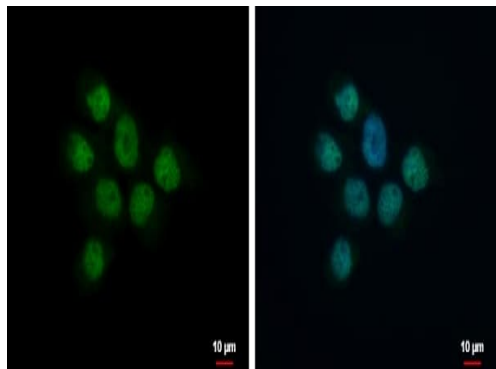
Lane 2 : Raji (human Burkitt's lymphoma cell line) whole cell extract

Lane 3 : NCI-H1299 (human lung carcinoma cell line) whole cell extract

Lysates/proteins at 30 µg per lane.

Predicted band size: 122 kDa

7.5% SDS-PAGE gel.



Immunocytochemistry/ Immunofluorescence - Anti-MAP3K9 antibody (ab228752)

4% paraformaldehyde-fixed A431 (human epidermoid carcinoma cell line) cells stained for MAP3K9 (green) using ab228752 at 1/500 dilution in ICC/IF.

Nuclear counterstain: Hoechst 33342 (blue).

Please note: All products are "FOR RESEARCH USE ONLY. NOT FOR USE IN DIAGNOSTIC PROCEDURES"

Our Abpromise to you: Quality guaranteed and expert technical support

- Replacement or refund for products not performing as stated on the datasheet
- Valid for 12 months from date of delivery
- Response to your inquiry within 24 hours
- We provide support in Chinese, English, French, German, Japanese and Spanish
- Extensive multi-media technical resources to help you
- We investigate all quality concerns to ensure our products perform to the highest standards

If the product does not perform as described on this datasheet, we will offer a refund or replacement. For full details of the Abpromise, please visit <https://www.abcam.com/abpromise> or contact our technical team.

Terms and conditions

- Guarantee only valid for products bought direct from Abcam or one of our authorized distributors