

Product datasheet

Anti-MAP4K4/NIK antibody ab243321

2 Images

Overview

Product name	Anti-MAP4K4/NIK antibody
Description	Rabbit polyclonal to MAP4K4/NIK
Host species	Rabbit
Tested applications	Suitable for: WB, IHC-P
Species reactivity	Reacts with: Human
Immunogen	Recombinant fragment corresponding to Human MAP4K4/NIK aa 600-750. Database link: O95819-3
	Run BLAST with Run BLAST with
Positive control	WB: MAP4K4/NIK overexpressing HEK-293T lysate. IHC-P: Human liver tissue.
General notes	<p>The Life Science industry has been in the grips of a reproducibility crisis for a number of years. Abcam is leading the way in addressing this with our range of recombinant monoclonal antibodies and knockout edited cell lines for gold-standard validation. Please check that this product meets your needs before purchasing.</p> <p>If you have any questions, special requirements or concerns, please send us an inquiry and/or contact our Support team ahead of purchase. Recommended alternatives for this product can be found below, along with publications, customer reviews and Q&As</p>

Properties

Form	Liquid
Storage instructions	Shipped at 4°C. Store at +4°C short term (1-2 weeks). Upon delivery aliquot. Store at -20°C long term. Avoid freeze / thaw cycle.
Storage buffer	pH: 7.20 Preservative: 0.02% Sodium azide Constituents: 40% Glycerol (glycerin, glycerine), PBS
Purity	Immunogen affinity purified
Clonality	Polyclonal
Isotype	IgG

Applications

The Abpromise guarantee

Our **Abpromise guarantee** covers the use of ab243321 in the following tested applications.

The application notes include recommended starting dilutions; optimal dilutions/concentrations should be determined by the end user.

Application	Abreviews	Notes
WB		Use a concentration of 0.04 - 0.4 µg/ml.
IHC-P		1/50 - 1/200. Perform heat mediated antigen retrieval with citrate buffer pH 6 before commencing with IHC staining protocol.

Target

Function

Serine/threonine kinase that may play a role in the response to environmental stress and cytokines such as TNF- α . Appears to act upstream of the JUN N-terminal pathway.

Tissue specificity

Appears to be ubiquitous. Expressed in all tissue types examined. Isoform 5 appears to be more abundant in the brain. Isoform 4 is predominant in the liver, skeletal muscle and placenta.

Sequence similarities

Belongs to the protein kinase superfamily. STE Ser/Thr protein kinase family. STE20 subfamily. Contains 1 CNH domain.
Contains 1 protein kinase domain.

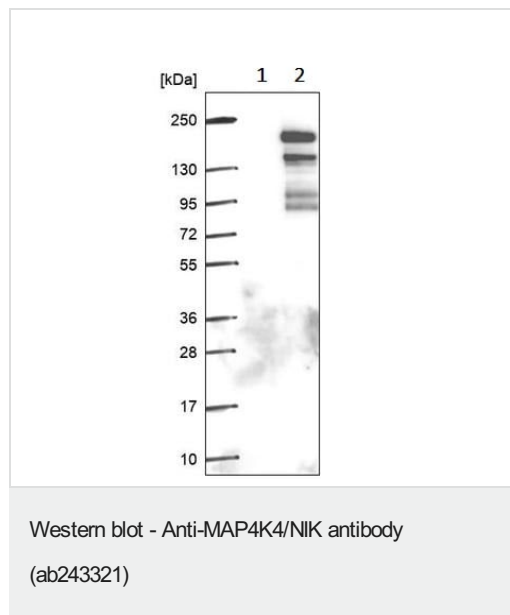
Post-translational modifications

Phosphorylated upon DNA damage, probably by ATM or ATR.

Cellular localization

Cytoplasm.

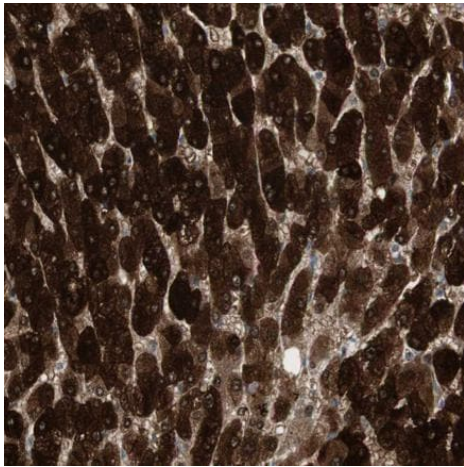
Images



All lanes : Anti-MAP4K4/NIK antibody (ab243321) at 0.4 µg/ml

Lane 1 : HEK-293T (human epithelial cell line from embryonic kidney transformed with large T antigen) cell lysate

Lane 2 : MAP4K4/NIK overexpressing HEK-293T lysate



Formalin-fixed, paraffin-embedded human liver tissue stained for MAP4K4/NIK using ab243321 at 1/50 dilution in immunohistochemical analysis.

Immunohistochemistry (Formalin/PFA-fixed paraffin-embedded sections) - Anti-MAP4K4/NIK antibody (ab243321)

Please note: All products are "FOR RESEARCH USE ONLY. NOT FOR USE IN DIAGNOSTIC PROCEDURES"

Our Abpromise to you: Quality guaranteed and expert technical support

- Replacement or refund for products not performing as stated on the datasheet
- Valid for 12 months from date of delivery
- Response to your inquiry within 24 hours
- We provide support in Chinese, English, French, German, Japanese and Spanish
- Extensive multi-media technical resources to help you
- We investigate all quality concerns to ensure our products perform to the highest standards

If the product does not perform as described on this datasheet, we will offer a refund or replacement. For full details of the Abpromise, please visit <https://www.abcam.com/abpromise> or contact our technical team.

Terms and conditions

- Guarantee only valid for products bought direct from Abcam or one of our authorized distributors