

## Product datasheet

# Anti-MAP4K5 antibody ab96551

3 Images

### Overview

---

<b>Product name</b>	Anti-MAP4K5 antibody
<b>Description</b>	Rabbit polyclonal to MAP4K5
<b>Host species</b>	Rabbit
<b>Tested applications</b>	<b>Suitable for:</b> WB, IHC-P, ICC/IF
<b>Species reactivity</b>	<b>Reacts with:</b> Human
<b>Immunogen</b>	Synthetic peptide, corresponding to a region within amino acids 417-482 (HCPDSESRAP QILRRQSSPS CGPVAETSSI GNGDGISKLM SENTEGSAQA PQLPRKNDKR DFPKPA) of Human MAP4K5 (NP_942089). <a href="#">Run BLAST with ExpASY</a> <a href="#">Run BLAST with NCBI</a>
<b>Positive control</b>	MOLT4 whole cell lysate; A431 cells; SAS xenograft; 293T, H1299, HepG2 and Raji cell lines
<b>General notes</b>	<p>The Life Science industry has been in the grips of a reproducibility crisis for a number of years. Abcam is leading the way in addressing this with our range of recombinant monoclonal antibodies and knockout edited cell lines for gold-standard validation. Please check that this product meets your needs before purchasing.</p> <p>If you have any questions, special requirements or concerns, please send us an inquiry and/or contact our Support team ahead of purchase. Recommended alternatives for this product can be found below, along with publications, customer reviews and Q&amp;As</p>

### Properties

---

<b>Form</b>	Liquid
<b>Storage instructions</b>	Shipped at 4°C. Upon delivery aliquot and store at -20°C or -80°C. Avoid repeated freeze / thaw cycles.
<b>Storage buffer</b>	pH: 7.00 Preservative: 0.01% Thimerosal (merthiolate) Constituents: 1.21% Tris, 0.75% Glycine, 10% Glycerol (glycerin, glycerine)
<b>Purity</b>	Immunogen affinity purified
<b>Clonality</b>	Polyclonal
<b>Isotype</b>	IgG

## Applications

### The Abpromise guarantee

Our **Abpromise guarantee** covers the use of ab96551 in the following tested applications.

The application notes include recommended starting dilutions; optimal dilutions/concentrations should be determined by the end user.

Application	Abreviews	Notes
WB		1/500 - 1/3000. Predicted molecular weight: 95 kDa.
IHC-P		1/100 - 1/500.
ICC/IF		1/100 - 1/200.

## Target

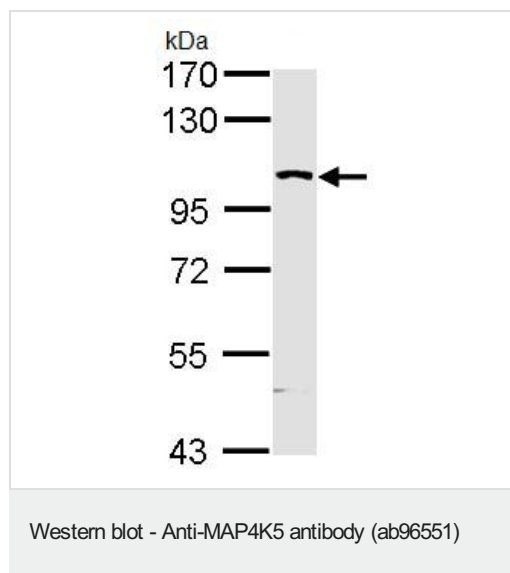
### Relevance

MAP4K5, a member of the STE20 subfamily of Ser/Thr protein kinases, may play a role in the response to environmental stress. It appears to act upstream of the JUN N-terminal pathway. MAP4K5 interacts with both SH3 domains of the adapter proteins CRK and CRKL. This cytoplasmic protein is ubiquitously expressed in all tissues examined, with high levels in the ovary, testis and prostate.

### Cellular localization

Cytoplasmic

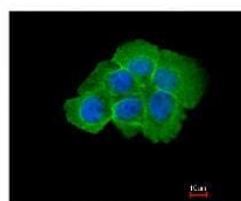
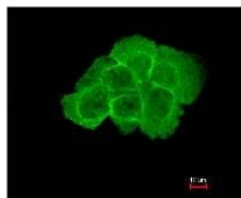
## Images



Anti-MAP4K5 antibody (ab96551) at 1/5000 dilution + MOLT4 whole cell lysate at 30  $\mu$ g

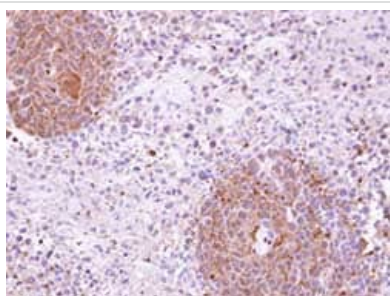
**Predicted band size:** 95 kDa

12% SDS PAGE



Immunocytochemistry/ Immunofluorescence - Anti-MAP4K5 antibody (ab96551)

ab96551, at 1/200 dilution, staining MAP4K5 in paraformaldehyde-fixed A431 cells by Immunofluorescence. The lower image is merged with DNA probe.



Immunohistochemistry (Formalin/PFA-fixed paraffin-embedded sections) - Anti-MAP4K5 antibody (ab96551)

ab96551, at 1/100 dilution, staining MAP4K5 in paraffin-embedded SAS xenograft by Immunohistochemistry.

**Please note:** All products are "FOR RESEARCH USE ONLY. NOT FOR USE IN DIAGNOSTIC PROCEDURES"

### Our Promise to you: Quality guaranteed and expert technical support

- Replacement or refund for products not performing as stated on the datasheet
- Valid for 12 months from date of delivery
- Response to your inquiry within 24 hours
- We provide support in Chinese, English, French, German, Japanese and Spanish
- Extensive multi-media technical resources to help you

- We investigate all quality concerns to ensure our products perform to the highest standards

If the product does not perform as described on this datasheet, we will offer a refund or replacement. For full details of the Abpromise, please visit <https://www.abcam.com/abpromise> or contact our technical team.

### **Terms and conditions**

---

- Guarantee only valid for products bought direct from Abcam or one of our authorized distributors