


## Product datasheet

# Anti-MAPK6/ERK3 (phospho S189) antibody ab74032

[7 References](#) [2 Images](#)

### Overview

---

<b>Product name</b>	Anti-MAPK6/ERK3 (phospho S189) antibody
<b>Description</b>	Rabbit polyclonal to MAPK6/ERK3 (phospho S189)
<b>Host species</b>	Rabbit
<b>Tested applications</b>	<b>Suitable for:</b> WB, IHC-P
<b>Species reactivity</b>	<b>Reacts with:</b> Mouse, Human <b>Predicted to work with:</b> Rat 
<b>Immunogen</b>	Synthetic peptide corresponding to Human MAPK6/ERK3 (phospho S189). Sequence: H-L-Sp-E-G  Database link: <a href="#">Q16659</a> <a href="#">Run BLAST with</a> <a href="#">Run BLAST with</a>
<b>General notes</b>	<p>The Life Science industry has been in the grips of a reproducibility crisis for a number of years. Abcam is leading the way in addressing this with our range of recombinant monoclonal antibodies and knockout edited cell lines for gold-standard validation. Please check that this product meets your needs before purchasing.</p> <p>If you have any questions, special requirements or concerns, please send us an inquiry and/or contact our Support team ahead of purchase. Recommended alternatives for this product can be found below, along with publications, customer reviews and Q&amp;As</p>

### Properties

---

<b>Form</b>	Liquid
<b>Storage instructions</b>	Shipped at 4°C. Upon delivery aliquot and store at -20°C. Avoid freeze / thaw cycles.
<b>Storage buffer</b>	pH: 7.40 Preservative: 0.02% Sodium azide Constituents: 50% Glycerol (glycerin, glycerine), 0.87% Sodium chloride, PBS  Without Mg <sup>2+</sup> and Ca <sup>2+</sup>
<b>Purity</b>	Immunogen affinity purified
<b>Purification notes</b>	ab74032 was affinity-purified from rabbit antiserum by affinity-chromatography using epitope-

specific phosphopeptide. The antibody against non-phosphopeptide was removed by chromatography using non-phosphopeptide corresponding to the phosphorylation site.

**Clonality** Polyclonal  
**Isotype** IgG

## Applications

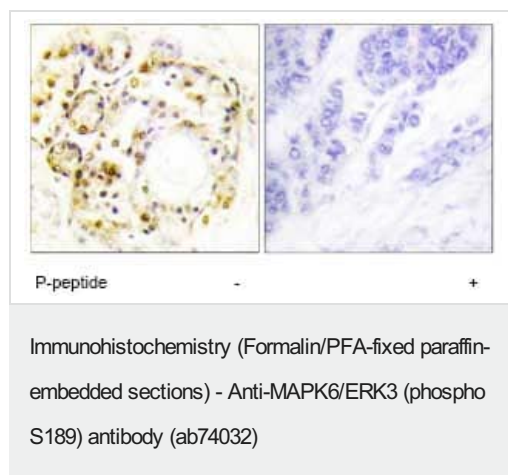
**The Abpromise guarantee** Our **Abpromise guarantee** covers the use of ab74032 in the following tested applications. The application notes include recommended starting dilutions; optimal dilutions/concentrations should be determined by the end user.

Application	Abreviews	Notes
WB		1/500 - 1/1000. Detects a band of approximately 90 kDa (predicted molecular weight: 83 kDa).
IHC-P		1/50 - 1/100.

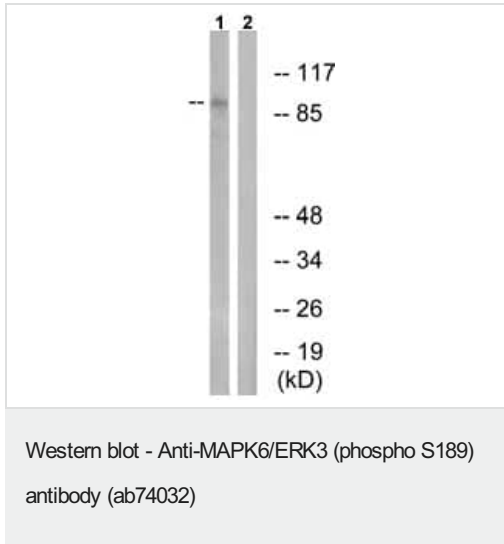
## Target

**Function** Phosphorylates microtubule-associated protein 2 (MAP2). May promote entry in the cell cycle.  
**Tissue specificity** Highest expression in the skeletal muscle, followed by the brain. Also found in heart, placenta, lung, liver, pancreas, kidney and skin fibroblasts.  
**Sequence similarities** Belongs to the protein kinase superfamily. CMGC Ser/Thr protein kinase family. MAP kinase subfamily.  
Contains 1 protein kinase domain.  
**Domain** The TXY motif contains the threonine and tyrosine residues whose phosphorylation activates the MAP kinases.  
**Post-translational modifications** Dually phosphorylated on Thr-626 and Tyr-628, which activates the enzyme.

## Images



Immunohistochemistry analysis of paraffin-embedded human breast carcinoma tissue using ab74032, at 1/50 dilution, in the presence (right panel) or absence (left panel) of immunising phosphopeptide.



**All lanes :** Anti-MAPK6/ERK3 (phospho S189) antibody (ab74032) at 1/500 dilution

**Lane 1 :** Extracts from mouse brain

**Lane 2 :** Extracts from mouse brain with immunising phosphopeptide at 5 µg

Lysates/proteins at 5 µg per lane.

**Predicted band size:** 83 kDa

**Observed band size:** 90 kDa

**Please note:** All products are "FOR RESEARCH USE ONLY. NOT FOR USE IN DIAGNOSTIC PROCEDURES"

### Our Abpromise to you: Quality guaranteed and expert technical support

- Replacement or refund for products not performing as stated on the datasheet
- Valid for 12 months from date of delivery
- Response to your inquiry within 24 hours
- We provide support in Chinese, English, French, German, Japanese and Spanish
- Extensive multi-media technical resources to help you
- We investigate all quality concerns to ensure our products perform to the highest standards

If the product does not perform as described on this datasheet, we will offer a refund or replacement. For full details of the Abpromise, please visit <https://www.abcam.com/abpromise> or contact our technical team.

### Terms and conditions

- Guarantee only valid for products bought direct from Abcam or one of our authorized distributors