


Product datasheet

Anti-MAPRE1/EB1 antibody ab232970

5 Images

Overview

Product name	Anti-MAPRE1/EB1 antibody
Description	Rabbit polyclonal to MAPRE1/EB1
Host species	Rabbit
Tested applications	Suitable for: WB, ICC/IF, IHC-P
Species reactivity	Reacts with: Human, Pig Predicted to work with: Mouse, Rat, Cow, Orangutan 
Immunogen	Recombinant full length protein (His-T7-tag) corresponding to Human MAPRE1/EB1 aa 1 to the C-terminus. Expressed in E.coli. Database link: Q15691 Run BLAST with Run BLAST with
Positive control	WB: Recombinant human MAPRE1/EB1 protein; HeLa and Jurkat cell lysates; Pig brain lysate. IHC-P: Human liver and kidney tissue. ICC/IF: HeLa cells.
General notes	The Life Science industry has been in the grips of a reproducibility crisis for a number of years. Abcam is leading the way in addressing this with our range of recombinant monoclonal antibodies and knockout edited cell lines for gold-standard validation. Please check that this product meets your needs before purchasing. If you have any questions, special requirements or concerns, please send us an inquiry and/or contact our Support team ahead of purchase. Recommended alternatives for this product can be found below, along with publications, customer reviews and Q&As

Properties

Form	Liquid
Storage instructions	Shipped at 4°C. Store at +4°C short term (1-2 weeks). Upon delivery aliquot. Store at -20°C long term. Avoid freeze / thaw cycle.
Storage buffer	pH: 7.40 Preservative: 0.011% Proclin 300 Constituents: 55.77% Glycerol (glycerin, glycerine), 44.219% PBS
Purity	Protein A purified
Purification notes	Antigen-specific affinity chromatography followed by Protein A affinity chromatography.
Clonality	Polyclonal

Isotype

IgG

Applications

The Abpromise guarantee

Our **Abpromise guarantee** covers the use of ab232970 in the following tested applications.

The application notes include recommended starting dilutions; optimal dilutions/concentrations should be determined by the end user.

Application	Abreviews	Notes
WB		Use a concentration of 0.5 - 2 µg/ml. Predicted molecular weight: 30 kDa.
ICC/IF		Use a concentration of 5 - 20 µg/ml.
IHC-P		Use a concentration of 5 - 20 µg/ml.

Target

Function

May be involved in microtubule polymerization, and spindle function by stabilizing microtubules and anchoring them at centrosomes. May play a role in cell migration.

Tissue specificity

Ubiquitously expressed.

Sequence similarities

Belongs to the MAPRE family.

Contains 1 CH (calponin-homology) domain.

Contains 1 EB1 C-terminal domain.

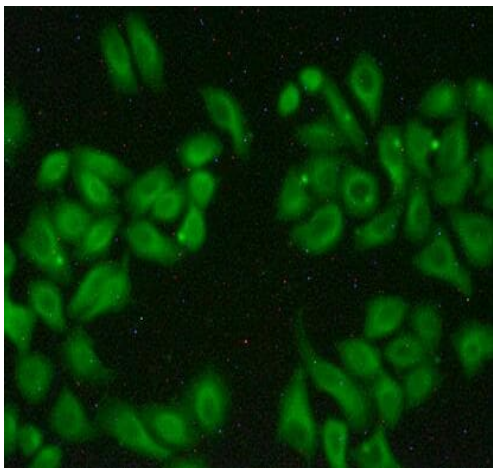
Domain

Composed of two functionally independent domains. The N-terminal domain forms an hydrophobic cleft involved in microtubule binding and the C-terminal is involved in the formation of mutually exclusive complexes with APC and DCTN1.

Cellular localization

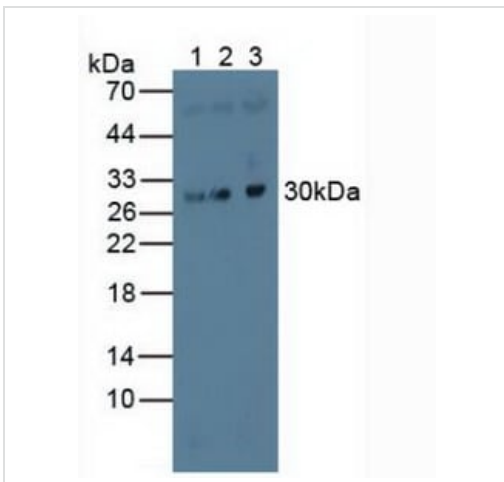
Cytoplasm > cytoskeleton. Cytoplasm > cytoskeleton > centrosome. Associated with the microtubule network at the growing distal tip of microtubules. Also enriched at the centrosome.

Images



Immunocytochemistry/ Immunofluorescence - Anti-MAPRE1/EB1 antibody (ab232970)

HeLa (human epithelial cell line from cervix adenocarcinoma) cells stained for MAPRE1/EB1 (green) using ab232970 at 20 µg/ml in ICC/IF. FITC labeling.



Western blot - Anti-MAPRE1/EB1 antibody (ab232970)

All lanes : Anti-MAPRE1/EB1 antibody (ab232970) at 3 µg/ml

Lane 1 : HeLa (human epithelial cell line from cervix adenocarcinoma) cell lysate

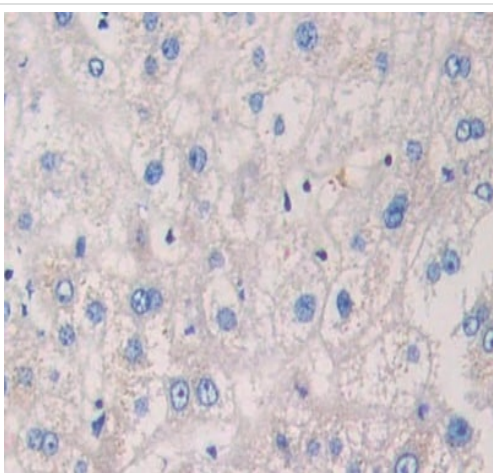
Lane 2 : Jurkat (human T cell leukemia cell line from peripheral blood) cell lysate

Lane 3 : Pig brain lysate

Secondary

All lanes : HRP-Linked Guinea pig anti-Rabbit at 1/2000 dilution

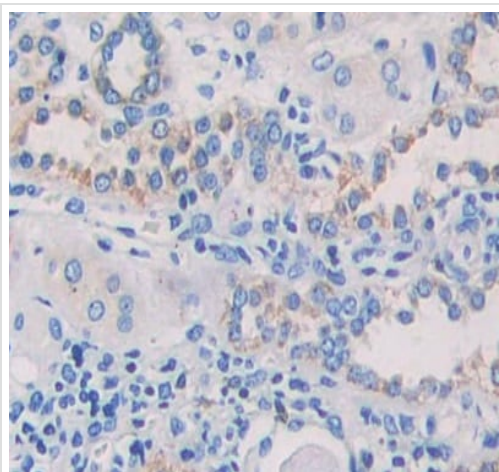
Predicted band size: 30 kDa



Immunohistochemistry (Formalin/PFA-fixed paraffin-embedded sections) - Anti-MAPRE1/EB1 antibody (ab232970)

Formalin-fixed, paraffin-embedded human liver tissue stained for MAPRE1/EB1 using ab232970 at 10 µg/ml in immunohistochemical analysis.

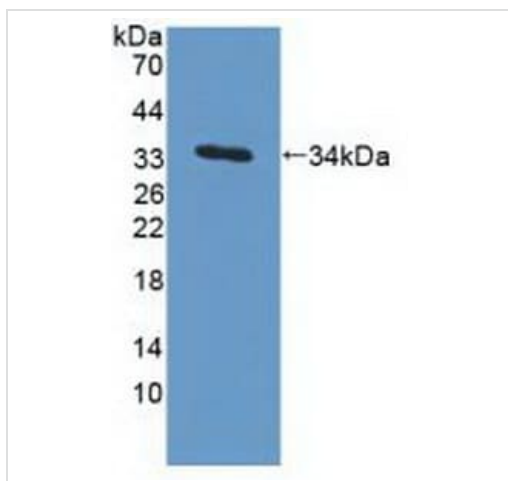
Secondary used: HRP-Linked Goat anti-Rabbit IgG polyclonal at 2 µg/ml. DAB staining.



Immunohistochemistry (Formalin/PFA-fixed paraffin-embedded sections) - Anti-MAPRE1/EB1 antibody (ab232970)

Formalin-fixed, paraffin-embedded human kidney tissue stained for MAPRE1/EB1 using ab232970 at 10 µg/ml in immunohistochemical analysis.

Secondary used: HRP-Linked Goat anti-Rabbit IgG polyclonal at 2 µg/ml. DAB staining.



Western blot - Anti-MAPRE1/EB1 antibody (ab232970)

Anti-MAPRE1/EB1 antibody (ab232970) at 3 µg/ml + Recombinant human MAPRE1/EB1 protein

Secondary

HRP-Linked Guinea pig anti-Rabbit at 1/2000 dilution

Predicted band size: 30 kDa

Please note: All products are "FOR RESEARCH USE ONLY. NOT FOR USE IN DIAGNOSTIC PROCEDURES"

Our Abpromise to you: Quality guaranteed and expert technical support

- Replacement or refund for products not performing as stated on the datasheet
- Valid for 12 months from date of delivery
- Response to your inquiry within 24 hours
- We provide support in Chinese, English, French, German, Japanese and Spanish
- Extensive multi-media technical resources to help you
- We investigate all quality concerns to ensure our products perform to the highest standards

If the product does not perform as described on this datasheet, we will offer a refund or replacement. For full details of the Abpromise,

please visit <https://www.abcam.com/abpromise> or contact our technical team.

Terms and conditions

- Guarantee only valid for products bought direct from Abcam or one of our authorized distributors