




## Product datasheet

### Anti-MAPRE1/EB1 antibody ab50188

★★★★★ [3 Abreviews](#) [7 References](#) [3 Images](#)

#### Overview

<b>Product name</b>	Anti-MAPRE1/EB1 antibody
<b>Description</b>	Rabbit polyclonal to MAPRE1/EB1
<b>Host species</b>	Rabbit
<b>Tested applications</b>	<b>Suitable for:</b> WB, IP, ICC/IF
<b>Species reactivity</b>	<b>Reacts with:</b> Mouse, Rat, Human <b>Predicted to work with:</b> Chicken, Cow, Dog, Pig 
<b>Immunogen</b>	Synthetic peptide corresponding to Human MAPRE1/EB1 aa 252-268 (C terminal) conjugated to keyhole limpet haemocyanin. Sequence: GFVIPDEGGPQEEQEEY <div>  <a href="#">Run BLAST with</a>  <a href="#">Run BLAST with</a> </div>
<b>Positive control</b>	Cell lysate of the rat fibroblast cell line Rat1, Rat1 cells and a HeLa cell lysate.
<b>General notes</b>	<p>The Life Science industry has been in the grips of a reproducibility crisis for a number of years. Abcam is leading the way in addressing this with our range of recombinant monoclonal antibodies and knockout edited cell lines for gold-standard validation. Please check that this product meets your needs before purchasing.</p> <p>If you have any questions, special requirements or concerns, please send us an inquiry and/or contact our Support team ahead of purchase. Recommended alternatives for this product can be found below, along with publications, customer reviews and Q&amp;As</p>

#### Properties

<b>Form</b>	Liquid
<b>Storage instructions</b>	Shipped at 4°C. Store at +4°C short term (1-2 weeks). Upon delivery aliquot. Store at -20°C or -80°C. Avoid freeze / thaw cycle.
<b>Storage buffer</b>	pH: 7.40 Preservative: 0.097% Sodium azide Constituent: 0.0268% PBS
<b>Purity</b>	Immunogen affinity purified
<b>Purification notes</b>	ab50188 is affinity-purified using the immunizing peptide immobilized on agarose.

<b>Clonality</b>	Polyclonal
<b>Isotype</b>	IgG

## Applications

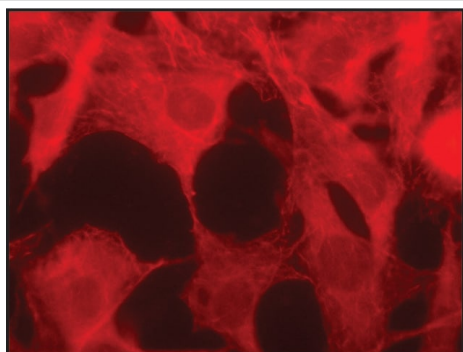
**The Abpromise guarantee** Our **Abpromise guarantee** covers the use of ab50188 in the following tested applications. The application notes include recommended starting dilutions; optimal dilutions/concentrations should be determined by the end user.

Application	Abreviews	Notes
<b>WB</b>		Use a concentration of 0.5 - 1 µg/ml. Predicted molecular weight: 30 kDa.
<b>IP</b>		Use a concentration of 10 - 20 µg/ml.
<b>ICC/IF</b>	★★★★★ (3)	Use a concentration of 1 - 2 µg/ml.

## Target

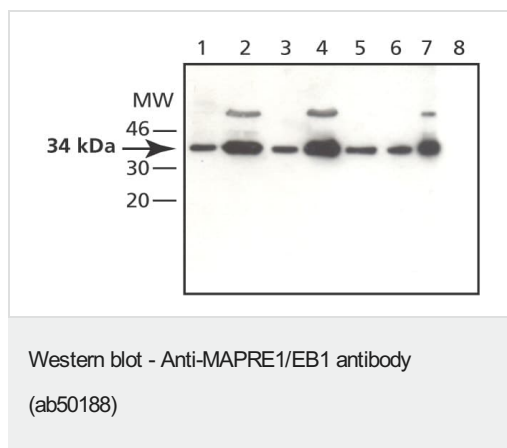
<b>Function</b>	May be involved in microtubule polymerization, and spindle function by stabilizing microtubules and anchoring them at centrosomes. May play a role in cell migration.
<b>Tissue specificity</b>	Ubiquitously expressed.
<b>Sequence similarities</b>	Belongs to the MAPRE family. Contains 1 CH (calponin-homology) domain. Contains 1 EB1 C-terminal domain.
<b>Domain</b>	Composed of two functionally independent domains. The N-terminal domain forms an hydrophobic cleft involved in microtubule binding and the C-terminal is involved in the formation of mutually exclusive complexes with APC and DCTN1.
<b>Cellular localization</b>	Cytoplasm > cytoskeleton. Cytoplasm > cytoskeleton > centrosome. Associated with the microtubule network at the growing distal tip of microtubules. Also enriched at the centrosome.

## Images



ab50188 at 1ug/ml dilution staining the “plus-end tracking protein” (+TIP) structures in Rat1 fibroblasts grown to semi-confluency and fixed with acetone/methanol. The antibody was developed with Goat Anti-Rabbit IgG, Cy3 conjugate. Antibody dilution 1:1,000.

Immunocytochemistry/ Immunofluorescence - Anti-MAPRE1/EB1 antibody (ab50188)



**All lanes :** Anti-MAPRE1/EB1 antibody (ab50188) at 0.5 µg/ml

**Lane 1 :** HeLa cell lysate

**Lane 2 :** NIH3T3 cell lysate

**Lane 3 :** Rat1 cell lysate

**Lane 4 :** A431 cell lysate

**Lane 5 :** SW48 cell lysate

**Lane 6 :** HCT116 cell lysate

**Lane 7 :** HEK293 cell lysate

**Lane 8 :** HeLa cell lysate with EB1 immunizing peptide at 10 µg/ml

### Secondary

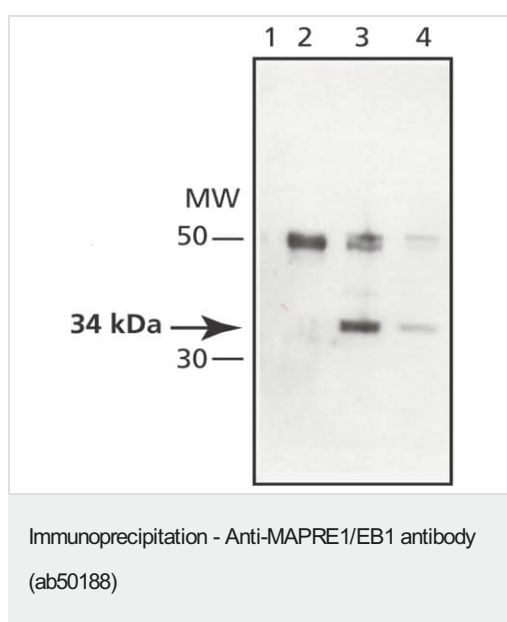
**All lanes :** Goat Anti-Rabbit IgG, Peroxidase conjugate at 1/1000 dilution

**Predicted band size:** 30 kDa

**Observed band size:** 34 kDa

**Additional bands at:** 50 kDa. We are unsure as to the identity of these extra bands.

50kDa band represents Rb IgG heavy chain



RIPA lysate of HeLa cells immunoprecipitated with ab50188, separated SDS-PAGE and blotted with ab50188. 50kDa band represents Rb IgG heavy chain

**Lane 1 :** No primary antibody

**Lanes 2-4 :** Anti-MAPRE1/EB1 antibody (ab50188) at 15 µg

**Lanes 1-2 :** No lysate

**Lane 3 :** HeLa cell lysate at 100 µg

**Lane 4 :** HeLa cell lysate at 25 µg

### Secondary

**All lanes :** Goat Anti-Rabbit IgG, Peroxidase conjugate at 1/1000 dilution

**Observed band size:** 34 kDa

**Additional bands at:** 50 kDa. We are unsure as to the identity of these extra bands.

**Please note:** All products are "FOR RESEARCH USE ONLY. NOT FOR USE IN DIAGNOSTIC PROCEDURES"

#### **Our Abpromise to you: Quality guaranteed and expert technical support**

---

- Replacement or refund for products not performing as stated on the datasheet
- Valid for 12 months from date of delivery
- Response to your inquiry within 24 hours
- We provide support in Chinese, English, French, German, Japanese and Spanish
- Extensive multi-media technical resources to help you
- We investigate all quality concerns to ensure our products perform to the highest standards

If the product does not perform as described on this datasheet, we will offer a refund or replacement. For full details of the Abpromise, please visit <https://www.abcam.com/abpromise> or contact our technical team.

#### **Terms and conditions**

---

- Guarantee only valid for products bought direct from Abcam or one of our authorized distributors