

Anti-MARCKS (phospho S162) antibody ab194804

2 Images

Overview

Product name	Anti-MARCKS (phospho S162) antibody
Description	Rabbit polyclonal to MARCKS (phospho S162)
Host species	Rabbit
Tested applications	Suitable for: WB, ICC/IF
Species reactivity	Reacts with: Human
Immunogen	Synthetic peptide corresponding to Human MARCKS (phospho S162). A phospho specific peptide corresponding to residues surrounding S162 of Human MARCKS. Database link: P29966
Positive control	PMA-treated 293 cell extract; HeLa cells.
General notes	<p>The Life Science industry has been in the grips of a reproducibility crisis for a number of years. Abcam is leading the way in addressing this with our range of recombinant monoclonal antibodies and knockout edited cell lines for gold-standard validation. Please check that this product meets your needs before purchasing.</p> <p>If you have any questions, special requirements or concerns, please send us an inquiry and/or contact our Support team ahead of purchase. Recommended alternatives for this product can be found below, along with publications, customer reviews and Q&As</p>

Properties

Form	Liquid
Storage instructions	Shipped at 4°C. Store at +4°C short term (1-2 weeks). Upon delivery aliquot. Store at -20°C long term. Avoid freeze / thaw cycle.
Storage buffer	pH: 7.30 Preservative: 0.02% Sodium azide Constituents: 49% PBS, 50% Glycerol
Purity	Immunogen affinity purified
Clonality	Polyclonal
Isotype	IgG

Applications

The Abpromise guarantee

Our **Abpromise guarantee** covers the use of ab194804 in the following tested applications.

The application notes include recommended starting dilutions; optimal dilutions/concentrations should be determined by the end user.

Application	Abreviews	Notes
WB		1/500 - 1/2000. Predicted molecular weight: 32 kDa.
ICC/IF		1/100 - 1/200.

Target

Function

MARCKS is the most prominent cellular substrate for protein kinase C. This protein binds calmodulin, actin, and synapsin. MARCKS is a filamentous (F) actin cross-linking protein.

Sequence similarities

Belongs to the MARCKS family.

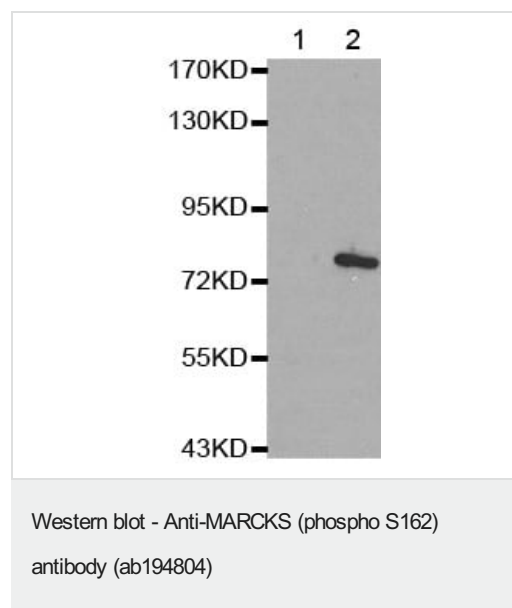
Post-translational modifications

Phosphorylation by PKC displaces MARCKS from the membrane. It also inhibits the F-actin cross-linking activity.

Cellular localization

Cytoplasm > cytoskeleton. Membrane.

Images

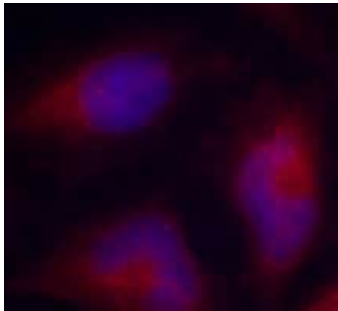


All lanes : Anti-MARCKS (phospho S162) antibody (ab194804) at 1/500 dilution

Lane 1 : Untreated 293 cell extract

Lane 2 : PMA-treated 293 cell extract

Predicted band size: 32 kDa



Immunofluorescence analysis of methanol-fixed HeLa cells, labeling MARCKS (phospho S162) (red) with ab194804 at 1/100 dilution.

Immunocytochemistry/ Immunofluorescence - Anti-MARCKS (phospho S162) antibody (ab194804)

Please note: All products are "FOR RESEARCH USE ONLY. NOT FOR USE IN DIAGNOSTIC PROCEDURES"

Our Abpromise to you: Quality guaranteed and expert technical support

- Replacement or refund for products not performing as stated on the datasheet
- Valid for 12 months from date of delivery
- Response to your inquiry within 24 hours
- We provide support in Chinese, English, French, German, Japanese and Spanish
- Extensive multi-media technical resources to help you
- We investigate all quality concerns to ensure our products perform to the highest standards

If the product does not perform as described on this datasheet, we will offer a refund or replacement. For full details of the Abpromise, please visit <https://www.abcam.com/abpromise> or contact our technical team.

Terms and conditions

- Guarantee only valid for products bought direct from Abcam or one of our authorized distributors