


# Anti-MARK2 antibody - N-terminal ab136872

3 Images

### Overview

<b>Product name</b>	Anti-MARK2 antibody - N-terminal
<b>Description</b>	Rabbit polyclonal to MARK2 - N-terminal
<b>Host species</b>	Rabbit
<b>Tested applications</b>	<b>Suitable for:</b> WB, IHC-P, ICC/IF
<b>Species reactivity</b>	<b>Reacts with:</b> Human, African green monkey <b>Predicted to work with:</b> Mouse, Rat 
<b>Immunogen</b>	Synthetic peptide corresponding to amino acids within the N-terminal of Human MARK2.
<b>Positive control</b>	Human kidney tubule tissue; A549 cells; COS7 cell extract.
<b>General notes</b>	<p>The Life Science industry has been in the grips of a reproducibility crisis for a number of years. Abcam is leading the way in addressing this with our range of recombinant monoclonal antibodies and knockout edited cell lines for gold-standard validation. Please check that this product meets your needs before purchasing.</p> <p>If you have any questions, special requirements or concerns, please send us an inquiry and/or contact our Support team ahead of purchase. Recommended alternatives for this product can be found below, along with publications, customer reviews and Q&amp;As</p>

### Properties

<b>Form</b>	Liquid
<b>Storage instructions</b>	Shipped at 4°C. Upon delivery aliquot and store at -20°C. Avoid freeze / thaw cycles.
<b>Storage buffer</b>	<p>pH: 7.40</p> <p>Preservative: 0.02% Sodium azide</p> <p>Constituents: 48% PBS, 50% Glycerol (glycerin, glycerine), 0.88% Sodium chloride</p>
<b>Purity</b>	PBS without Mg2+ and Ca2+
<b>Clonality</b>	Protein A purified
<b>Isotype</b>	Polyclonal
<b>Isotype</b>	IgG

### Applications

## The Abpromise guarantee

Our **Abpromise guarantee** covers the use of ab136872 in the following tested applications.

The application notes include recommended starting dilutions; optimal dilutions/concentrations should be determined by the end user.

Application	Abreviews	Notes
WB		1/500 - 1/1000. Predicted molecular weight: 88 kDa.
IHC-P		Use a concentration of 10 µg/ml. Perform heat mediated antigen retrieval before commencing with IHC staining protocol.
ICC/IF		1/100 - 1/500.

## Target

### Function

Role in epithelial morphogenesis. Modulates the developmental decision to build a columnar versus a hepatic epithelial cell apparently by promoting a switch from a direct to a transcytotic mode of apical protein delivery. Essential for the asymmetric development of membrane domains of polarized epithelial cells. One or more isoforms may play a role in graft rejection.

### Tissue specificity

High levels of expression in heart, brain, skeletal muscle and pancreas, lower levels observed in lung, liver and kidney.

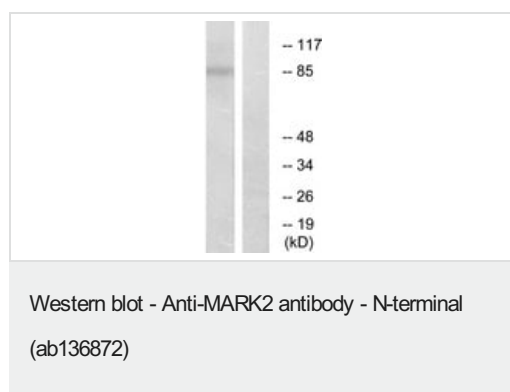
### Sequence similarities

Belongs to the protein kinase superfamily. CAMK Ser/Thr protein kinase family. MARK subfamily. Contains 1 KA1 (kinase-associated) domain.  
Contains 1 protein kinase domain.  
Contains 1 UBA domain.

### Cellular localization

Cell membrane. Phosphorylated by PRKCZ in polarized epithelial cells, resulting in an interaction with YWHAZ which promotes relocation from the lateral to the apical membrane.

## Images

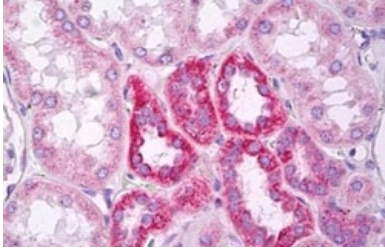


**All lanes :** Anti-MARK2 antibody - N-terminal (ab136872) at 1/500 dilution

**Lane 1 :** COS7 cell extract

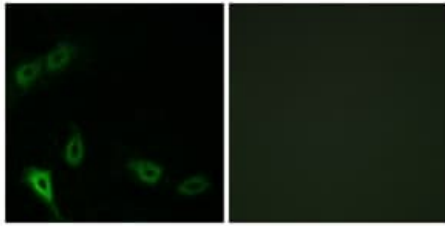
**Lane 2 :** COS7 cell extract with synthesised peptide

**Predicted band size:** 88 kDa



Immunohistochemical analysis of paraffin embedded Human kidney tubules labelling ab136872 at 10µg/ml.

Immunohistochemistry (Formalin/PFA-fixed paraffin-embedded sections) - Anti-MARK2 antibody - N-terminal (ab136872)



Immunofluorescence of A549 cells labelling ab136872 at 1/100 dilution. Image on the right is treated with synthesised peptide

Immunocytochemistry/ Immunofluorescence - Anti-MARK2 antibody - N-terminal (ab136872)

**Please note:** All products are "FOR RESEARCH USE ONLY. NOT FOR USE IN DIAGNOSTIC PROCEDURES"

### Our Abpromise to you: Quality guaranteed and expert technical support

- Replacement or refund for products not performing as stated on the datasheet
- Valid for 12 months from date of delivery
- Response to your inquiry within 24 hours
- We provide support in Chinese, English, French, German, Japanese and Spanish
- Extensive multi-media technical resources to help you
- We investigate all quality concerns to ensure our products perform to the highest standards

If the product does not perform as described on this datasheet, we will offer a refund or replacement. For full details of the Abpromise, please visit <https://www.abcam.com/abpromise> or contact our technical team.

### Terms and conditions

- Guarantee only valid for products bought direct from Abcam or one of our authorized distributors