

Product datasheet

Anti-MARVELD1 antibody ab91640

[7 References](#) [1 Image](#)

Overview

Product name	Anti-MARVELD1 antibody
Description	Rabbit polyclonal to MARVELD1
Host species	Rabbit
Specificity	Specific for MARVELD1. Does not bind to other MARVELD proteins.
Tested applications	Suitable for: WB
Species reactivity	Reacts with: Mouse
Immunogen	16 amino acids synthetic peptide from the N terminal region of Human MARVELD1 (EAW49903).
General notes	<p>The Life Science industry has been in the grips of a reproducibility crisis for a number of years. Abcam is leading the way in addressing this with our range of recombinant monoclonal antibodies and knockout edited cell lines for gold-standard validation. Please check that this product meets your needs before purchasing.</p> <p>If you have any questions, special requirements or concerns, please send us an inquiry and/or contact our Support team ahead of purchase. Recommended alternatives for this product can be found below, along with publications, customer reviews and Q&As</p>

Properties

Form	Liquid
Storage instructions	Shipped at 4°C. Store at +4°C.
Storage buffer	pH: 7.2 Preservative: 0.02% Sodium azide Constituent: PBS
Purity	Immunogen affinity purified
Clonality	Polyclonal
Isotype	IgG

Applications

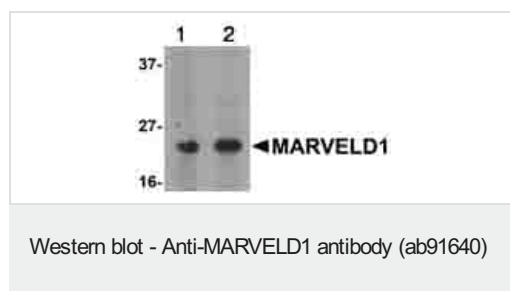
The Abpromise guarantee Our **Abpromise guarantee** covers the use of ab91640 in the following tested applications. The application notes include recommended starting dilutions; optimal dilutions/concentrations should be determined by the end user.

Application	Abreviews	Notes
WB		Use a concentration of 1 - 2 µg/ml. Predicted molecular weight: 19 kDa.

Target

Function	Microtubule-associated protein that exhibits cell cycle-dependent localization and can inhibit cell proliferation and migration.
Tissue specificity	Widely expressed in normal tissues. Down-regulated in multiple primary tumors.
Sequence similarities	Contains 1 MARVEL domain.
Cellular localization	Cell membrane. Cytoplasm > cytoskeleton. Nucleus. Observed in the nucleus and at the perinuclear region during interphase, but localizes at the mitotic spindle and midbody at metaphase. A significant fraction of MARVELD1 translocates to the plasma membrane during anaphase or upon microtubule depolymerization.

Images



Lane 1 : Anti-MARVELD1 antibody (ab91640) at 1 µg/ml

Lane 2 : Anti-MARVELD1 antibody (ab91640) at 2 µg/ml

All lanes : Mouse heart lysate

Lysates/proteins at 15 µg per lane.

Predicted band size: 19 kDa

Please note: All products are "FOR RESEARCH USE ONLY. NOT FOR USE IN DIAGNOSTIC PROCEDURES"

Our Abpromise to you: Quality guaranteed and expert technical support

- Replacement or refund for products not performing as stated on the datasheet
- Valid for 12 months from date of delivery
- Response to your inquiry within 24 hours
- We provide support in Chinese, English, French, German, Japanese and Spanish
- Extensive multi-media technical resources to help you
- We investigate all quality concerns to ensure our products perform to the highest standards

If the product does not perform as described on this datasheet, we will offer a refund or replacement. For full details of the Abpromise, please visit <https://www.abcam.com/abpromise> or contact our technical team.

Terms and conditions

- Guarantee only valid for products bought direct from Abcam or one of our authorized distributors