

Product datasheet

Anti-MASH1/Achaete-scute homolog 1 antibody ab227886

5 Images

Overview

Product name	Anti-MASH1/Achaete-scute homolog 1 antibody
Description	Rabbit polyclonal to MASH1/Achaete-scute homolog 1
Host species	Rabbit
Tested applications	Suitable for: WB, IHC-P
Species reactivity	Reacts with: Rat, Human
Immunogen	Recombinant fragment within Human MASH1/Achaete-scute homolog 1 (internal sequence). The exact sequence is proprietary. Database link: P50553
Positive control	WB: SK N SH whole cell lysate (ab3956), SH-SY5Y, PC-12 and Rat2 whole cell extracts; SH-SY5Y nuclear extract. IHC-P: Rat brain tissue.
General notes	<p>The Life Science industry has been in the grips of a reproducibility crisis for a number of years. Abcam is leading the way in addressing this with our range of recombinant monoclonal antibodies and knockout edited cell lines for gold-standard validation. Please check that this product meets your needs before purchasing.</p> <p>If you have any questions, special requirements or concerns, please send us an inquiry and/or contact our Support team ahead of purchase. Recommended alternatives for this product can be found below, along with publications, customer reviews and Q&As</p>

Properties

Form	Liquid
Storage instructions	Shipped at 4°C. Store at +4°C short term (1-2 weeks). Upon delivery aliquot. Store at -20°C long term. Avoid freeze / thaw cycle.
Storage buffer	pH: 7.00 Preservative: 0.025% Proclin 300 Constituents: 79% PBS, 20% Glycerol (glycerin, glycerine)
Purity	Immunogen affinity purified
Clonality	Polyclonal
Isotype	IgG

Applications

The Abpromise guarantee

Our **Abpromise guarantee** covers the use of ab227886 in the following tested applications.

The application notes include recommended starting dilutions; optimal dilutions/concentrations should be determined by the end user.

Application	Abreviews	Notes
WB		1/500 - 1/3000. Predicted molecular weight: 25 kDa.
IHC-P		1/100 - 1/1000.

Target

Function

May play a role at early stages of development of specific neural lineages in most regions of the CNS, and of several lineages in the PNS. Essential for the generation of olfactory and autonomic neurons. Activates transcription by binding to the E box (5'-CANNTG-3').

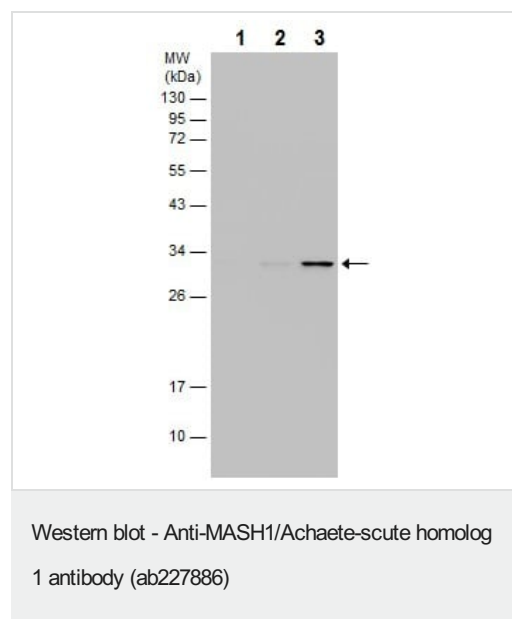
Sequence similarities

Contains 1 basic helix-loop-helix (bHLH) domain.

Cellular localization

Nucleus.

Images



All lanes : Anti-MASH1/Achaete-scute homolog 1 antibody (ab227886) at 1/1000 dilution

Lane 1 : A549 (human lung carcinoma cell line) whole cell extract

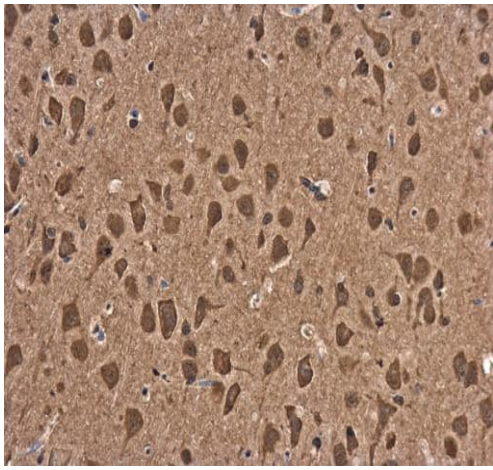
Lane 2 : SH-SY5Y (human neuroblastoma cell line from bone marrow) whole cell extract

Lane 3 : SH-SY5Y (human neuroblastoma cell line from bone marrow) nuclear extract

Lysates/proteins at 30 µg per lane.

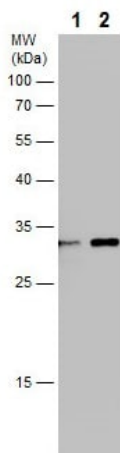
Predicted band size: 25 kDa

12% SDS-PAGE gel.



Immunohistochemistry (Formalin/PFA-fixed paraffin-embedded sections) - Anti-MASH1/Achaete-scute homolog 1 antibody (ab227886)

Paraffin-embedded rat brain tissue stained for MASH1/Achaete-scute homolog 1 using ab227886 at 1/500 dilution in immunohistochemical analysis.



Western blot - Anti-MASH1/Achaete-scute homolog 1 antibody (ab227886)

All lanes : Anti-MASH1/Achaete-scute homolog 1 antibody (ab227886) at 1/1000 dilution

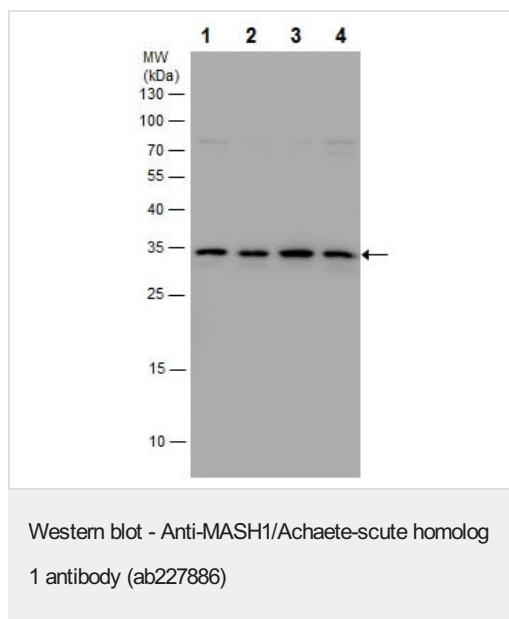
Lane 1 : SH-SY5Y (human neuroblastoma cell line from bone marrow) whole cell extract

Lane 2 : SH-SY5Y (human neuroblastoma cell line from bone marrow) nuclear extract

Lysates/proteins at 30 µg per lane.

Predicted band size: 25 kDa

12% SDS-PAGE gel.



All lanes : Anti-MASH1/Achaete-scute homolog 1 antibody (ab227886) at 1/1000 dilution

Lane 1 : U-87 MG (human glioblastoma-astrocytoma epithelial cell line) whole cell extract

Lane 2 : SK-N-SH (human neuroblastoma cell line) whole cell extract

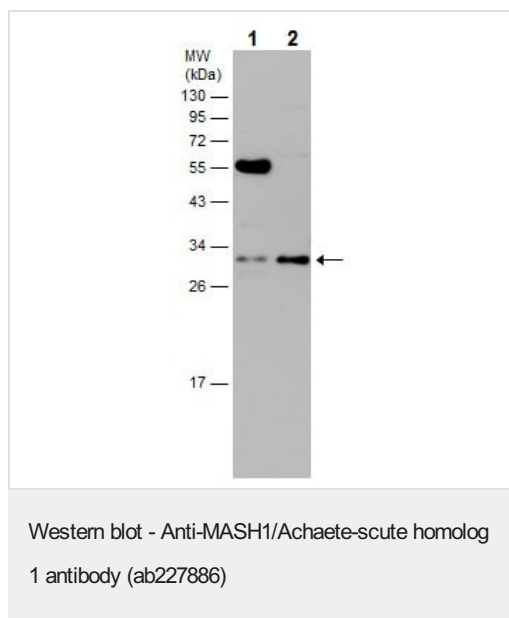
Lane 3 : IMR32 whole cell extract

Lane 4 : SK-N-AS whole cell extract

Lysates/proteins at 30 µg per lane.

Predicted band size: 25 kDa

15 % SDS-PAGE gel.



All lanes : Anti-MASH1/Achaete-scute homolog 1 antibody (ab227886) at 1/1000 dilution

Lane 1 : PC-12 (rat adrenal gland pheochromocytoma cell line) whole cell extract

Lane 2 : Rat2 (rat fibroblast cell line) whole cell extract

Lysates/proteins at 30 µg per lane.

Predicted band size: 25 kDa

12% SDS-PAGE gel.

Please note: All products are "FOR RESEARCH USE ONLY. NOT FOR USE IN DIAGNOSTIC PROCEDURES"

Our Promise to you: Quality guaranteed and expert technical support

- Replacement or refund for products not performing as stated on the datasheet
- Valid for 12 months from date of delivery
- Response to your inquiry within 24 hours
- We provide support in Chinese, English, French, German, Japanese and Spanish
- Extensive multi-media technical resources to help you
- We investigate all quality concerns to ensure our products perform to the highest standards

If the product does not perform as described on this datasheet, we will offer a refund or replacement. For full details of the Abpromise, please visit <https://www.abcam.com/abpromise> or contact our technical team.

Terms and conditions

- Guarantee only valid for products bought direct from Abcam or one of our authorized distributors