


Product datasheet

Anti-Mast Cell Chymase antibody ab233103

[2 References](#) [5 Images](#)

Overview

| | |
|----------------------------|---|
| Product name | Anti-Mast Cell Chymase antibody |
| Description | Rabbit polyclonal to Mast Cell Chymase |
| Host species | Rabbit |
| Tested applications | Suitable for: WB, IHC-P, ICC/IF |
| Species reactivity | Reacts with: Mouse, Human Predicted to work with: Rat  |
| Immunogen | Recombinant fragment (His-T7-tag) corresponding to Mouse Mast Cell Chymase aa 1 to the C-terminus. (Expressed in E.coli). Database link: P21844 Run BLAST with Run BLAST with |
| Positive control | WB: Mouse large intestine and testis tissue; PC-3 cell lysate; Recombinant mouse Mast Cell Chymase protein. IHC-P: Mouse lung and uterine fibroids tissue. ICC/IF: PC-3 cells. |
| General notes | <p>The Life Science industry has been in the grips of a reproducibility crisis for a number of years. Abcam is leading the way in addressing this with our range of recombinant monoclonal antibodies and knockout edited cell lines for gold-standard validation. Please check that this product meets your needs before purchasing.</p> <p>If you have any questions, special requirements or concerns, please send us an inquiry and/or contact our Support team ahead of purchase. Recommended alternatives for this product can be found below, along with publications, customer reviews and Q&As</p> |

Properties

| | |
|-----------------------------|---|
| Form | Liquid |
| Storage instructions | Shipped at 4°C. Store at +4°C short term (1-2 weeks). Upon delivery aliquot. Store at -20°C long term. Avoid freeze / thaw cycle. |
| Storage buffer | pH: 7.40 Preservative: 0.011% Proclin 300 Constituents: 55.77% Glycerol (glycerin, glycerine), 44.219% PBS |
| Purity | Immunogen affinity purified |
| Purification notes | Antigen-specific affinity chromatography followed by Protein A affinity chromatography. |
| Clonality | Polyclonal |

Isotype

IgG

Applications

The Abpromise guarantee

Our **Abpromise guarantee** covers the use of ab233103 in the following tested applications.

The application notes include recommended starting dilutions; optimal dilutions/concentrations should be determined by the end user.

| Application | Abreviews | Notes |
|-------------|-----------|---|
| WB | | Use a concentration of 0.5 - 2 µg/ml. Predicted molecular weight: 28 kDa. |
| IHC-P | | Use a concentration of 5 - 20 µg/ml. |
| ICC/IF | | Use a concentration of 5 - 20 µg/ml. |

Target

Function

Major secreted protease of mast cells with suspected roles in vasoactive peptide generation, extracellular matrix degradation, and regulation of gland secretion.

Tissue specificity

Mast cells in lung, heart, skin and placenta. Expressed in both normal skin and in urticaria pigmentosa lesions.

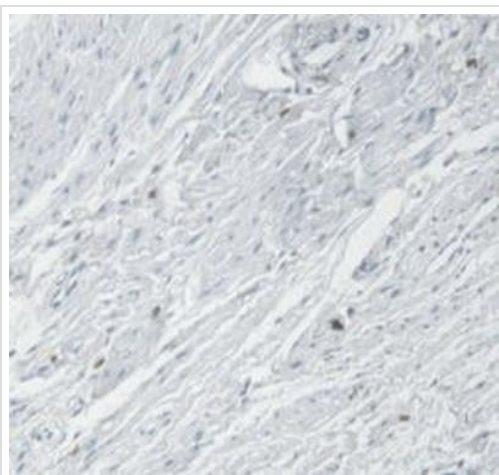
Sequence similarities

Belongs to the peptidase S1 family. Granzyme subfamily.
Contains 1 peptidase S1 domain.

Cellular localization

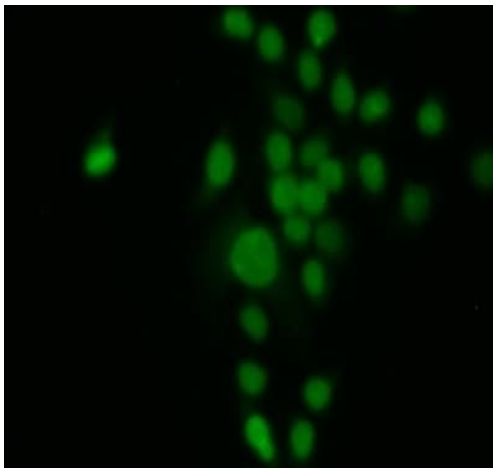
Secreted. Cytoplasmic granule. Mast cell granules.

Images



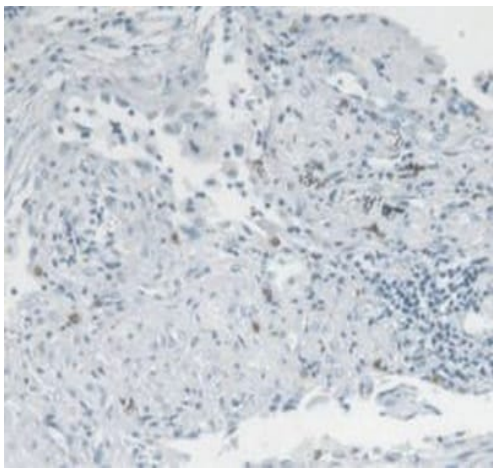
Formalin-fixed, paraffin-embedded mouse uterine fibroids tissue stained for Mast Cell Chymase using ab233103 at 20 µg/mL in immunohistochemical analysis. DAB staining.

Immunohistochemistry (Formalin/PFA-fixed paraffin-embedded sections) - Anti-Mast Cell Chymase antibody (ab233103)



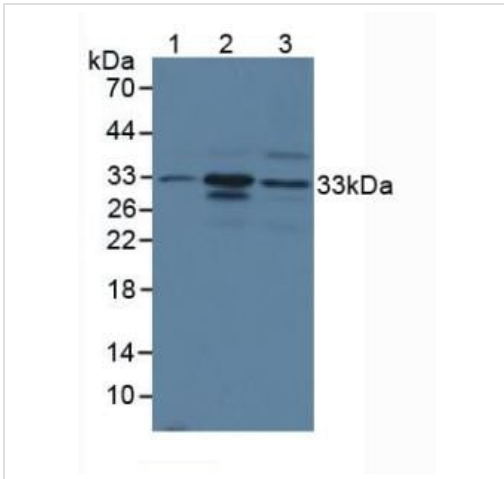
PC-3 (human prostate adenocarcinoma cell line) cells stained for Mast Cell Chymase using ab233103 (green) at 20 $\mu\text{g}/\text{mL}$ in ICC/IF. FITC-labeled secondary antibody.

Immunocytochemistry/ Immunofluorescence - Anti-Mast Cell Chymase antibody (ab233103)



Formalin-fixed, paraffin-embedded mouse lung tissue stained for Mast Cell Chymase using ab233103 at 20 $\mu\text{g}/\text{mL}$ in immunohistochemical analysis. DAB staining.

Immunohistochemistry (Formalin/PFA-fixed paraffin-embedded sections) - Anti-Mast Cell Chymase antibody (ab233103)



Western blot - Anti-Mast Cell Chymase antibody (ab233103)

All lanes : Anti-Mast Cell Chymase antibody (ab233103) at 2 µg/ml

Lane 1 : Mouse large intestine lysate

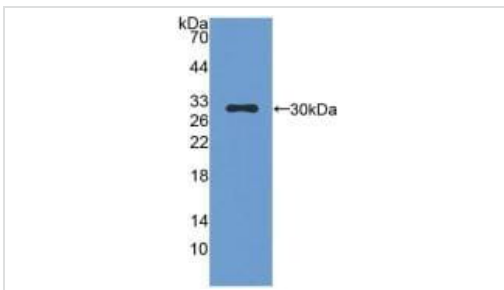
Lane 2 : Mouse testis lysate

Lane 3 : PC-3 (human prostate adenocarcinoma cell line) cell lysate

Secondary

All lanes : HRP-Linked Guinea pig anti-rabbit at 1/2000 dilution

Predicted band size: 28 kDa



Western blot - Anti-Mast Cell Chymase antibody (ab233103)

Anti-Mast Cell Chymase antibody (ab233103) at 2 µg/ml +
Recombinant mouse Mast Cell Chymase protein

Secondary

HRP-Linked Guinea pig Anti-Rabbit Ab at 1/2000 dilution

Predicted band size: 28 kDa

Please note: All products are "FOR RESEARCH USE ONLY. NOT FOR USE IN DIAGNOSTIC PROCEDURES"

Our Abpromise to you: Quality guaranteed and expert technical support

- Replacement or refund for products not performing as stated on the datasheet
- Valid for 12 months from date of delivery
- Response to your inquiry within 24 hours
- We provide support in Chinese, English, French, German, Japanese and Spanish
- Extensive multi-media technical resources to help you
- We investigate all quality concerns to ensure our products perform to the highest standards

If the product does not perform as described on this datasheet, we will offer a refund or replacement. For full details of the Abpromise, please visit <https://www.abcam.com/abpromise> or contact our technical team.

Terms and conditions

- Guarantee only valid for products bought direct from Abcam or one of our authorized distributors