

## Product datasheet

# Anti-MATN3/Matrilin-3 antibody ab106388

[2 References](#) [1 Image](#)

### Overview

<b>Product name</b>	Anti-MATN3/Matrilin-3 antibody
<b>Description</b>	Rabbit polyclonal to MATN3/Matrilin-3
<b>Host species</b>	Rabbit
<b>Tested applications</b>	<b>Suitable for:</b> WB
<b>Species reactivity</b>	<b>Reacts with:</b> Rat
<b>Immunogen</b>	Synthetic peptide corresponding to Human MATN3/Matrilin-3 (internal sequence). 13 amino acid peptide from near the center of Human MATN3/Matrilin-3. Database link: <a href="#">AAI39908</a>
<b>Positive control</b>	WB: Rat thymus tissue lysate.
<b>General notes</b>	<p>The Life Science industry has been in the grips of a reproducibility crisis for a number of years. Abcam is leading the way in addressing this with our range of recombinant monoclonal antibodies and knockout edited cell lines for gold-standard validation. Please check that this product meets your needs before purchasing.</p> <p>If you have any questions, special requirements or concerns, please send us an inquiry and/or contact our Support team ahead of purchase. Recommended alternatives for this product can be found below, along with publications, customer reviews and Q&amp;As</p>

### Properties

<b>Form</b>	Liquid
<b>Storage instructions</b>	Shipped at 4°C. Store at 4°C (stable for up to 12 months).
<b>Storage buffer</b>	pH: 7.2 Preservative: 0.02% Sodium azide Constituent: PBS
<b>Purity</b>	Immunogen affinity purified
<b>Clonality</b>	Polyclonal
<b>Isotype</b>	IgG

### Applications

## The Abpromise guarantee

Our **Abpromise guarantee** covers the use of ab106388 in the following tested applications.

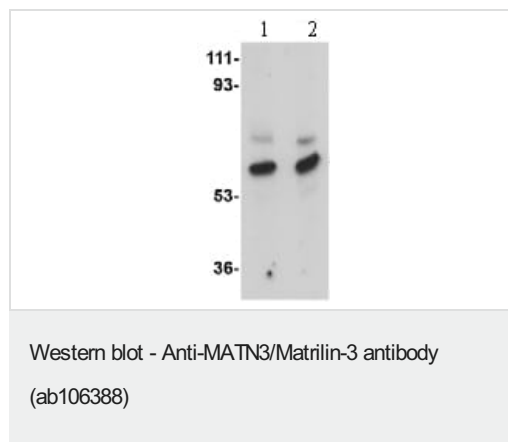
The application notes include recommended starting dilutions; optimal dilutions/concentrations should be determined by the end user.

Application	Abreviews	Notes
WB		Use a concentration of 1 - 2 µg/ml. Predicted molecular weight: 53 kDa.

## Target

Function	Major component of the extracellular matrix of cartilage and may play a role in the formation of extracellular filamentous networks.
Tissue specificity	Expressed only in cartilaginous tissues, such as vertebrae, ribs and shoulders.
Involvement in disease	Multiple epiphyseal dysplasia 5 Spondyloepimetaphyseal dysplasia MATN3-related Osteoarthritis 2
Sequence similarities	Contains 4 EGF-like domains. Contains 1 VWFA domain.
Cellular localization	Secreted.

## Images



**Lane 1 :** Anti-MATN3/Matrilin-3 antibody (ab106388) at 1 µg/ml

**Lane 2 :** Anti-MATN3/Matrilin-3 antibody (ab106388) at 2 µg/ml

**All lanes :** Rat thymus tissue lysate

Lysates/proteins at 15 µg per lane.

**Predicted band size:** 53 kDa

**Please note:** All products are "FOR RESEARCH USE ONLY. NOT FOR USE IN DIAGNOSTIC PROCEDURES"

## Our Abpromise to you: Quality guaranteed and expert technical support

- Replacement or refund for products not performing as stated on the datasheet
- Valid for 12 months from date of delivery
- Response to your inquiry within 24 hours
- We provide support in Chinese, English, French, German, Japanese and Spanish
- Extensive multi-media technical resources to help you
- We investigate all quality concerns to ensure our products perform to the highest standards

If the product does not perform as described on this datasheet, we will offer a refund or replacement. For full details of the Abpromise, please visit <https://www.abcam.com/abpromise> or contact our technical team.

#### **Terms and conditions**

---

- Guarantee only valid for products bought direct from Abcam or one of our authorized distributors