

Product datasheet

Anti-Matrix protein 1 antibody [GA2B] ab22396

★★★★★ [2 Abreviews](#) [24 References](#) [1 Image](#)

Overview

Product name	Anti-Matrix protein 1 antibody [GA2B]
Description	Mouse monoclonal [GA2B] to Matrix protein 1
Host species	Mouse
Tested applications	Suitable for: Flow Cyt, IHC-P, WB, ICC/IF
Species reactivity	Reacts with: Influenza A
Immunogen	Tissue, cells or virus corresponding to Matrix protein 1. Influenza A/ Puerto Rico/ 8/ 34 (H1N1) and A/Bangkok/ 1/ 79 (H3N2) viruses

General notes

The Life Science industry has been in the grips of a reproducibility crisis for a number of years. Abcam is leading the way in addressing this with our range of recombinant monoclonal antibodies and knockout edited cell lines for gold-standard validation. Please check that this product meets your needs before purchasing.

If you have any questions, special requirements or concerns, please send us an inquiry and/or contact our Support team ahead of purchase. Recommended alternatives for this product can be found below, along with publications, customer reviews and Q&As

Properties

Form	Liquid
Storage instructions	Shipped at 4°C. Upon delivery aliquot and store at -20°C. Avoid freeze / thaw cycles.
Storage buffer	pH: 7.50 Preservative: 0.09% Sodium azide Constituent: PBS
Purity	SDS-PAGE
Purification notes	>90% IgG content as established by SDS PAGE
Clonality	Monoclonal
Clone number	GA2B
Myeloma	P3x63-Ag8.653
Isotype	IgG1

Applications

Applications

The Abpromise guarantee Our **Abpromise guarantee** covers the use of ab22396 in the following tested applications.

The application notes include recommended starting dilutions; optimal dilutions/concentrations should be determined by the end user.

Application	Abreviews	Notes
Flow Cyt	★★★★★ (1)	Use at an assay dependent concentration. PubMed: 20413723 ab170190 - Mouse monoclonal IgG1, is suitable for use as an isotype control with this antibody.
IHC-P		Use at an assay dependent concentration.
WB	★★★★★ (1)	Use at an assay dependent concentration.
ICC/IF		1/100.

Target

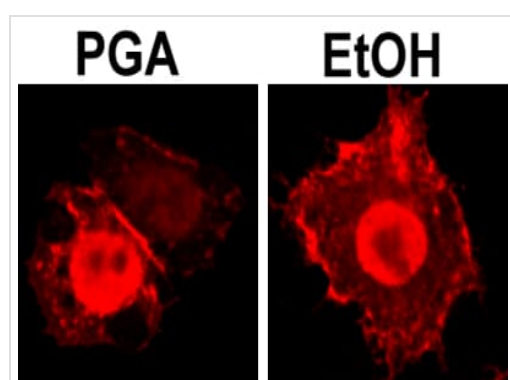
Relevance

Influenza virus type A matrix protein, also known as M1, is composed of a 252 amino acid sequence and is type-specific in influenza viruses. It is located inside the viral lipid envelope and plays a key role in virus assembly and replication. M1 can be isolated from particles by removing the envelope with detergents and reducing the pH to 4.0. Influenza viruses are a common and widely spread infectious agent. Like many other viruses, influenza virus are constantly undergoing mutations and thereby avoiding the immune system. The Influenza A Virus M proteins form a continuous shell on the inner side of the lipid bilayer, maintaining the structural integrity of the virus particle through hydrophobic interactions.

Cellular localization

Cytoplasmic

Images



Immunofluorescence analysis of HeLa cells staining Influenza A Virus M1 using ab22396.

Cells were treated with either 20 µg/ml Prostaglandin A (PGA) or EtOH vehicle control, 3 hours post infection by Influenza A Virus, then fractionated at 9 hours post infection before analysis by immunofluorescence.

Immunocytochemistry/ Immunofluorescence - Anti-Matrix protein 1 antibody [GA2B] (ab22396)

Image from Chase GP et al., PLoS Pathog. 2011 Sep;7(9):e1002187. Epub 2011 Sep 1. Fig 4.; doi:10.1371/journal.ppat.1002187; September 1, 2011, PLoS Pathog 7(9): e1002187.

Please note: All products are "FOR RESEARCH USE ONLY. NOT FOR USE IN DIAGNOSTIC PROCEDURES"

Our Abpromise to you: Quality guaranteed and expert technical support

- Replacement or refund for products not performing as stated on the datasheet
- Valid for 12 months from date of delivery
- Response to your inquiry within 24 hours

- We provide support in Chinese, English, French, German, Japanese and Spanish
- Extensive multi-media technical resources to help you
- We investigate all quality concerns to ensure our products perform to the highest standards

If the product does not perform as described on this datasheet, we will offer a refund or replacement. For full details of the Abpromise, please visit <https://www.abcam.com/abpromise> or contact our technical team.

Terms and conditions

- Guarantee only valid for products bought direct from Abcam or one of our authorized distributors