


Product datasheet

Anti-MAX antibody ab101271

[4 References](#) [3 Images](#)

Overview

Product name	Anti-MAX antibody
Description	Rabbit polyclonal to MAX
Host species	Rabbit
Tested applications	Suitable for: IHC-P, WB, IP
Species reactivity	Reacts with: Human Predicted to work with: Mouse, Chicken, Guinea pig, Cow, Dog, Turkey, Pig, Chimpanzee, Rhesus monkey, Gorilla, Orangutan, Platypus 
Immunogen	Synthetic peptide within Human MAX aa 100-200. The exact immunogen sequence used to generate this antibody is proprietary information. If additional detail on the immunogen is needed to determine the suitability of the antibody for your needs, please contact our Scientific Support team to discuss your requirements. Database link: P61244
Positive control	HeLa and 293T whole cell lysates This antibody gave a positive result in IHC in the following FFPE tissue: Human ovarian tissue
General notes	<p>The Life Science industry has been in the grips of a reproducibility crisis for a number of years. Abcam is leading the way in addressing this with our range of recombinant monoclonal antibodies and knockout edited cell lines for gold-standard validation. Please check that this product meets your needs before purchasing.</p> <p>If you have any questions, special requirements or concerns, please send us an inquiry and/or contact our Support team ahead of purchase. Recommended alternatives for this product can be found below, along with publications, customer reviews and Q&As</p>

Properties

Form	Liquid
Storage instructions	Shipped at 4°C. Upon delivery aliquot and store at -20°C. Avoid freeze / thaw cycles.
Storage buffer	pH: 7 Preservative: 0.09% Sodium azide Constituent: Tris citrate/phosphate
Purity	Immunogen affinity purified
Clonality	Polyclonal

Isotype

IgG

Applications

The Abpromise guarantee

Our **Abpromise guarantee** covers the use of ab101271 in the following tested applications.

The application notes include recommended starting dilutions; optimal dilutions/concentrations should be determined by the end user.

Application	Abreviews	Notes
IHC-P		Use at an assay dependent concentration.
WB		1/2000 - 1/10000. Predicted molecular weight: 18 kDa.
IP		Use at 2-5 µg/mg of lysate.

Target

Function

Transcription regulator. Forms a sequence-specific DNA-binding protein complex with MYC or MAD which recognizes the core sequence 5'-CAC[GA]TG-3'. The MYC:MAX complex is a transcriptional activator, whereas the MAD:MAX complex is a repressor. May repress transcription via the recruitment of a chromatin remodeling complex containing H3 'Lys-9' histone methyltransferase activity.

Tissue specificity

High levels found in the brain, heart and lung while lower levels are seen in the liver, kidney and skeletal muscle.

Involvement in disease

Pheochromocytoma

Sequence similarities

Belongs to the MAX family.
Contains 1 bHLH (basic helix-loop-helix) domain.

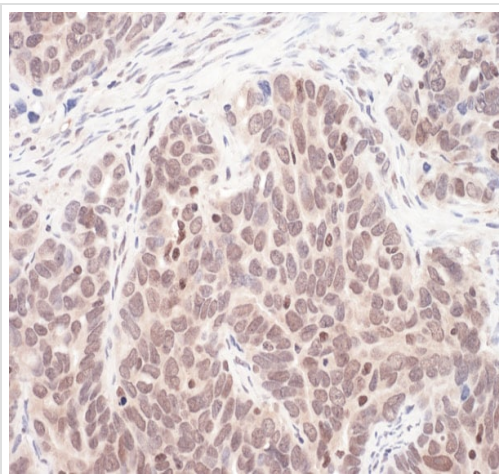
Post-translational modifications

Reversible lysine acetylation might regulate the nuclear-cytoplasmic shuttling of specific Max complexes.

Cellular localization

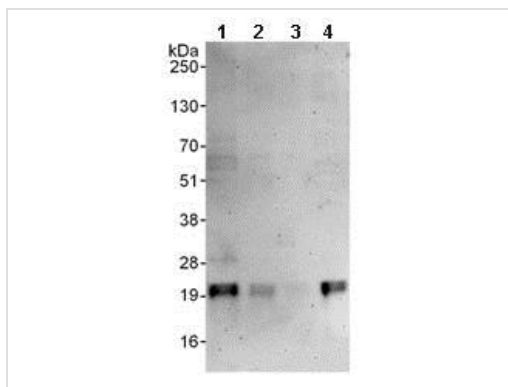
Nucleus. Cell projection, dendrite.

Images



Immunohistochemistry (Formalin/PFA-fixed paraffin-embedded sections) - Anti-MAX antibody (ab101271)

Immunohistochemistry (Formalin/PFA-fixed paraffin-embedded sections) analysis of human ovarian carcinoma tissue labelling MAX with ab101271 at 1/1000 (1µg/ml).



Western blot - Anti-MAX antibody (ab101271)

All lanes : Anti-MAX antibody (ab101271) at 0.1 µg/ml

Lane 1 : HeLa whole cell lysate at 50 µg

Lane 2 : HeLa whole cell lysate at 15 µg

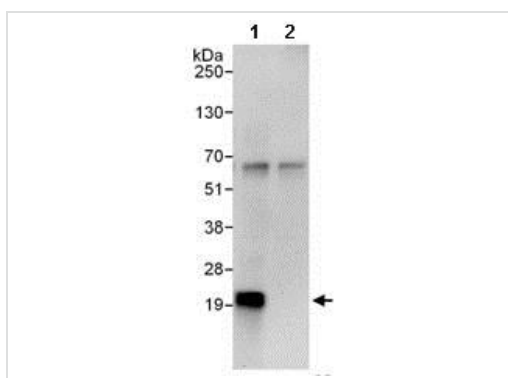
Lane 3 : HeLa whole cell lysate at 5 µg

Lane 4 : 293T whole cell lysate at 50 µg

Developed using the ECL technique.

Predicted band size: 18 kDa

Exposure time: 3 minutes



Immunoprecipitation - Anti-MAX antibody (ab101271)

Detection of MAX in Immunoprecipitates of HeLa whole cell lysate (1 mg for IP, 20% of IP loaded) using ab101271 at 3 µg/mg lysate for IP (Lane 1) and at 0.4 µg/ml for subsequent Western blot detection. Lane 2 represents Immunoprecipitates from control IgG. Detection: Chemiluminescence with an exposure time of 30 seconds.

Please note: All products are "FOR RESEARCH USE ONLY. NOT FOR USE IN DIAGNOSTIC PROCEDURES"

Our Abpromise to you: Quality guaranteed and expert technical support

-
- Replacement or refund for products not performing as stated on the datasheet
 - Valid for 12 months from date of delivery
 - Response to your inquiry within 24 hours

 - We provide support in Chinese, English, French, German, Japanese and Spanish
 - Extensive multi-media technical resources to help you
 - We investigate all quality concerns to ensure our products perform to the highest standards

If the product does not perform as described on this datasheet, we will offer a refund or replacement. For full details of the Abpromise, please visit <https://www.abcam.com/abpromise> or contact our technical team.

Terms and conditions

- Guarantee only valid for products bought direct from Abcam or one of our authorized distributors