


Product datasheet

Anti-MBLAC2 antibody ab122411

3 Images

Overview

Product name	Anti-MBLAC2 antibody
Description	Rabbit polyclonal to MBLAC2
Host species	Rabbit
Tested applications	Suitable for: ICC/IF, IHC-P, WB
Species reactivity	Reacts with: Human Predicted to work with: Horse, Rhesus monkey, Gorilla 
Immunogen	Recombinant fragment: RGDNFETVTW LSDSEVVRAP SPGWRARQFR VQAVQPTLIL QDGDVINLGD RQLTVMHMPG HSRGSICLHD KDRKILFSGD VVYDGSLI, corresponding to amino acids 110-197 of Human MBLAC2 (Q68D91). Run BLAST with ExPASy Run BLAST with NCBI
Positive control	WB: Human plasma, human liver, human tonsil, RT4 and U251 MG lysates IHC-P: Human esophagus tissue
General notes	<p>The Life Science industry has been in the grips of a reproducibility crisis for a number of years. Abcam is leading the way in addressing this with our range of recombinant monoclonal antibodies and knockout edited cell lines for gold-standard validation. Please check that this product meets your needs before purchasing.</p> <p>If you have any questions, special requirements or concerns, please send us an inquiry and/or contact our Support team ahead of purchase. Recommended alternatives for this product can be found below, along with publications, customer reviews and Q&As</p>

Properties

Form	Liquid
Storage instructions	Shipped at 4°C. Upon delivery aliquot and store at -20°C. Avoid freeze / thaw cycles.
Storage buffer	pH: 7.20 Preservative: 0.02% Sodium azide Constituents: 59% PBS, 40% Glycerol (glycerin, glycerine)
Purity	Immunogen affinity purified
Clonality	Polyclonal
Isotype	IgG

Applications

The Abpromise guarantee Our **Abpromise guarantee** covers the use of ab122411 in the following tested applications.

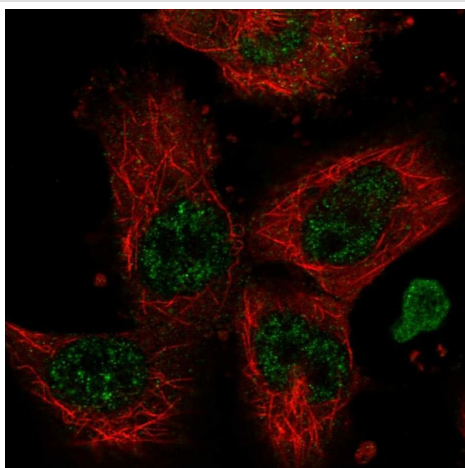
The application notes include recommended starting dilutions; optimal dilutions/concentrations should be determined by the end user.

Application	Abreviews	Notes
ICC/IF		Use a concentration of 1 - 4 µg/ml.
IHC-P		1/20 - 1/50. Perform heat mediated antigen retrieval with citrate buffer pH 6 before commencing with IHC staining protocol.
WB		Use a concentration of 0.04 - 0.4 µg/ml.

Target

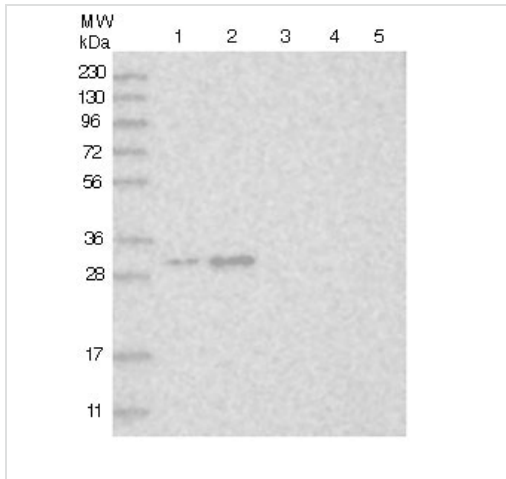
Sequence similarities Belongs to the metallo-beta-lactamase superfamily. Glyoxalase II family.

Images



Immunocytochemistry/immunofluorescence analysis of U2OS cells labelling MBLAC2 with ab122411 shows positive staining in the intermediate filaments.

Immunocytochemistry/ Immunofluorescence - Anti-MBLAC2 antibody (ab122411)



Western blot - Anti-MBLAC2 antibody (ab122411)

All lanes : Anti-MBLAC2 antibody (ab122411) at 1/250 dilution

Lane 1 : RT4 cell lysate

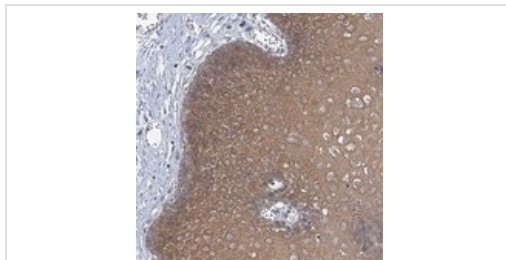
Lane 2 : U-251 MG cell lysate

Lane 3 : Human Plasma lysate

Lane 4 : Human Liver lysate

Lane 5 : Human Tonsil lysate

10-20% SDS PAGE



Immunohistochemistry (Formalin/PFA-fixed paraffin-embedded sections) - Anti-MBLAC2 antibody (ab122411)

ab122411 at 1/50 dilution staining MBLAC2 in paraffin-embedded Human esophagus tissue by Immunohistochemistry.

Please note: All products are "FOR RESEARCH USE ONLY. NOT FOR USE IN DIAGNOSTIC PROCEDURES"

Our Abpromise to you: Quality guaranteed and expert technical support

- Replacement or refund for products not performing as stated on the datasheet
- Valid for 12 months from date of delivery
- Response to your inquiry within 24 hours
- We provide support in Chinese, English, French, German, Japanese and Spanish

- Extensive multi-media technical resources to help you
- We investigate all quality concerns to ensure our products perform to the highest standards

If the product does not perform as described on this datasheet, we will offer a refund or replacement. For full details of the Abpromise, please visit <https://www.abcam.com/abpromise> or contact our technical team.

Terms and conditions

- Guarantee only valid for products bought direct from Abcam or one of our authorized distributors