


### Anti-MC-2 antibody ab87470

1 Image

#### Overview

<b>Product name</b>	Anti-MC-2 antibody
<b>Description</b>	Rabbit polyclonal to MC-2
<b>Host species</b>	Rabbit
<b>Tested applications</b>	<b>Suitable for:</b> WB
<b>Species reactivity</b>	<b>Reacts with:</b> Human <b>Predicted to work with:</b> Mouse, Hamster, Chimpanzee, Macaque monkey, Gorilla 
<b>Immunogen</b>	Synthetic peptide corresponding to Human MC-2 aa 50-150 conjugated to keyhole limpet haemocyanin. (Peptide available as <a href="#">ab125889</a> )
<b>Positive control</b>	This antibody gave a positive signal in Human Skeletal Muscle tissue lysate.
<b>General notes</b>	<p>The Life Science industry has been in the grips of a reproducibility crisis for a number of years. Abcam is leading the way in addressing this with our range of recombinant monoclonal antibodies and knockout edited cell lines for gold-standard validation. Please check that this product meets your needs before purchasing.</p> <p>If you have any questions, special requirements or concerns, please send us an inquiry and/or contact our Support team ahead of purchase. Recommended alternatives for this product can be found below, along with publications, customer reviews and Q&amp;As</p>

#### Properties

<b>Form</b>	Liquid
<b>Storage instructions</b>	Shipped at 4°C. Store at +4°C short term (1-2 weeks). Upon delivery aliquot. Store at -20°C or -80°C. Avoid freeze / thaw cycle.
<b>Storage buffer</b>	pH: 7.40 Preservative: 0.02% Sodium azide Constituents: 1% BSA, PBS  Batches of this product that have a concentration < 1mg/ml may have BSA added as a stabilising agent. If you would like information about the formulation of a specific lot, please contact our scientific support team who will be happy to help.
<b>Purity</b>	Immunogen affinity purified

<b>Clonality</b>	Polyclonal
<b>Isotype</b>	IgG

## Applications

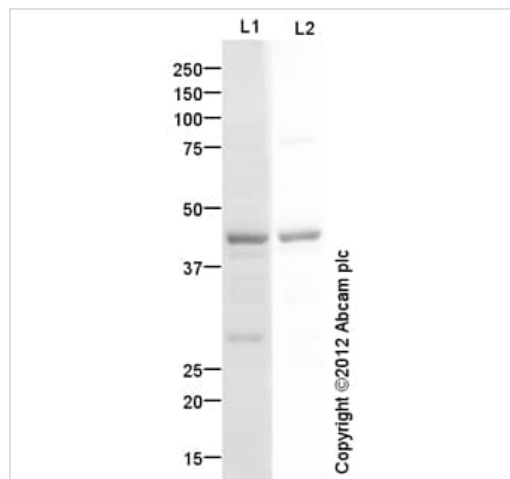
**The Abpromise guarantee** Our **Abpromise guarantee** covers the use of ab87470 in the following tested applications. The application notes include recommended starting dilutions; optimal dilutions/concentrations should be determined by the end user.

Application	Abreviews	Notes
<b>WB</b>		Use a concentration of 1 µg/ml. Detects a band of approximately 43 kDa (predicted molecular weight: 37 kDa).

## Target

<b>Function</b>	Receptor for MSH (alpha, beta and gamma) and ACTH. The activity of this receptor is mediated by G proteins which activate adenylate cyclase. This receptor is a possible mediator of the immunomodulation properties of melanocortins.
<b>Tissue specificity</b>	Expressed in the brain but not in the melanoma cells.
<b>Sequence similarities</b>	Belongs to the G-protein coupled receptor 1 family.
<b>Cellular localization</b>	Cell membrane.

## Images



Western blot - Anti-MC-2 antibody (ab87470)

**Lane 1** : Anti-MC-2 antibody (ab87470) at 1 µg/ml (Blocked in 5% BSA)

**Lane 2** : Anti-MC-2 antibody (ab87470) at 1 µg/ml (Blocked in 3% MILK)

**All lanes** : Human skeletal muscle tissue lysate - total protein ([ab29330](#))

Lysates/proteins at 10 µg per lane.

### Secondary

**Lane 1** : Goat Anti-Rabbit IgG H&L (HRP) preadsorbed ([ab97080](#)) at 1/5000 dilution

**Lane 2** : Recombinant rat MCP1 protein ([ab9780](#)) at 1/5000 dilution

Developed using the ECL technique.

Performed under reducing conditions.

**Predicted band size:** 37 kDa

**Observed band size:** 43 kDa

**Exposure time:** 2 minutes

MC-2 contains a number of potential glycosylation sites (SwissProt) which may explain its migration at a higher molecular weight than predicted. Abcam recommends using milk (3%) as the blocking agent. Abcam welcomes customer feedback and would appreciate any comments regarding this product and the data presented above.

**Please note:** All products are "FOR RESEARCH USE ONLY. NOT FOR USE IN DIAGNOSTIC PROCEDURES"

#### **Our Abpromise to you: Quality guaranteed and expert technical support**

---

- Replacement or refund for products not performing as stated on the datasheet
- Valid for 12 months from date of delivery
- Response to your inquiry within 24 hours
- We provide support in Chinese, English, French, German, Japanese and Spanish
- Extensive multi-media technical resources to help you
- We investigate all quality concerns to ensure our products perform to the highest standards

If the product does not perform as described on this datasheet, we will offer a refund or replacement. For full details of the Abpromise, please visit <https://www.abcam.com/abpromise> or contact our technical team.

#### **Terms and conditions**

---

- Guarantee only valid for products bought direct from Abcam or one of our authorized distributors