

## Product datasheet

### Anti-mCherry antibody ab167453

★★★★★ [17 Abreviews](#) [393 References](#) [2 Images](#)

#### Overview

<b>Product name</b>	Anti-mCherry antibody
<b>Description</b>	Rabbit polyclonal to mCherry
<b>Host species</b>	Rabbit
<b>Specificity</b>	Sequence homology shows that this antibody cross-reacts with tdTomato and mOrange
<b>Tested applications</b>	<b>Suitable for:</b> WB, ICC/IF
<b>Species reactivity</b>	<b>Reacts with:</b> Species independent
<b>Immunogen</b>	Recombinant full length protein corresponding to mCherry.
<b>General notes</b>	<p>The Life Science industry has been in the grips of a reproducibility crisis for a number of years. Abcam is leading the way in addressing this with our range of recombinant monoclonal antibodies and knockout edited cell lines for gold-standard validation. Please check that this product meets your needs before purchasing.</p> <p>If you have any questions, special requirements or concerns, please send us an inquiry and/or contact our Support team ahead of purchase. Recommended alternatives for this product can be found below, along with publications, customer reviews and Q&amp;As</p>

#### Properties

<b>Form</b>	Liquid
<b>Storage instructions</b>	Shipped at 4°C. Store at +4°C short term (1-2 weeks). Upon delivery aliquot. Store at -20°C long term.
<b>Storage buffer</b>	Preservative: 0.065% Sodium azide Constituent: PBS
<b>Purity</b>	Protein A purified
<b>Clonality</b>	Polyclonal
<b>Isotype</b>	IgG

#### Applications

**The Abpromise guarantee** Our **Abpromise guarantee** covers the use of ab167453 in the following tested applications. The application notes include recommended starting dilutions; optimal dilutions/concentrations should be determined by the end user.

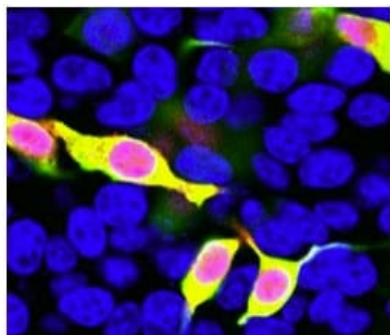
Application	Abreviews	Notes
WB	★★★★★ (3)	1/1000.
ICC/IF	★★★★★ (4)	1/500.

## Target

### Relevance

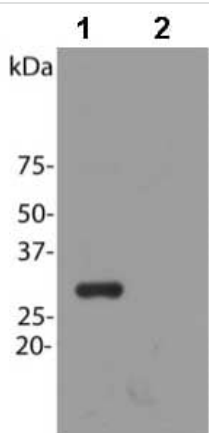
mCherry is derived from proteins originally isolated from *Cnidarians* (jelly fish, sea anemones and corals), and is used as a fluorescent tracer in trasfection and transgenic experiments. The prototype for these fluorescent proteins is Green Fluorescent Protein (GFP), which is a ~27kDa protein isolated originally from the jellyfish *Aequoria victoria*. The mCherry protein is derived from DsRed, a red fluorescent protein related to GFP isolated from so-called disc corals of the genus *Discosoma*.

## Images



Immunocytochemistry/ Immunofluorescence - Anti-mCherry antibody (ab167453)

Immunofluorescent analysis of HEK293 cells transfected with pFin-EF1-mCherry vector labeling mCherry with ab167453 at 1/500 (red). Green antibody staining is only seen in cells which express mCherry, as expected, and the superimposition of the green and red signals results in an orange signal. Blue DNA stain.



Western blot - Anti-mCherry antibody (ab167453)

**All lanes :** Anti-mCherry antibody (ab167453) at 1/1000 dilution

**Lane 1 :**

HEK293  
cells transfected with pFin-  
EF1-mCherry vector

**Lane 2 :**

Non-transfected HEK293  
cells

**Please note:** All products are "FOR RESEARCH USE ONLY. NOT FOR USE IN DIAGNOSTIC PROCEDURES"

### **Our Abpromise to you: Quality guaranteed and expert technical support**

---

- Replacement or refund for products not performing as stated on the datasheet
- Valid for 12 months from date of delivery
- Response to your inquiry within 24 hours
  
- We provide support in Chinese, English, French, German, Japanese and Spanish
- Extensive multi-media technical resources to help you
- We investigate all quality concerns to ensure our products perform to the highest standards

If the product does not perform as described on this datasheet, we will offer a refund or replacement. For full details of the Abpromise, please visit <https://www.abcam.com/abpromise> or contact our technical team.

### **Terms and conditions**

---

- Guarantee only valid for products bought direct from Abcam or one of our authorized distributors