



## Product datasheet

### Anti-MCJ antibody ab167199

[1 Image](#)

#### Overview

<b>Product name</b>	Anti-MCJ antibody
<b>Description</b>	Mouse polyclonal to MCJ
<b>Host species</b>	Mouse
<b>Tested applications</b>	<b>Suitable for:</b> WB
<b>Species reactivity</b>	<b>Reacts with:</b> Human
<b>Immunogen</b>	<p>Recombinant full length protein corresponding to Human MCJ aa 1-150.</p> <p>Sequence:</p> <p>MAARGVIAPVGESLRYAEYLQPSAKRPDADVDQQRLVRS            LIAVGLGVAAL            AFAGRYAFRIWKPLEQVITETAKKISTPSFSSYYKGGFEQK            MSRREAGLI            LGVSPSAGKAKIRTAHRRVMILNHPDKGGSPYVAAKINEA            KDLLETTTKH</p> <div>  <a href="#">Run BLAST with</a>  <a href="#">Run BLAST with</a> </div>
<b>Positive control</b>	Lysate of 293T cells transfected with MCJ.
<b>General notes</b>	<p>The Life Science industry has been in the grips of a reproducibility crisis for a number of years. Abcam is leading the way in addressing this with our range of recombinant monoclonal antibodies and knockout edited cell lines for gold-standard validation. Please check that this product meets your needs before purchasing.</p> <p>If you have any questions, special requirements or concerns, please send us an inquiry and/or contact our Support team ahead of purchase. Recommended alternatives for this product can be found below, along with publications, customer reviews and Q&amp;As</p>

#### Properties

<b>Form</b>	Liquid
<b>Storage instructions</b>	Shipped at 4°C. Store at +4°C short term (1-2 weeks). Upon delivery aliquot. Store at -20°C long term.
<b>Storage buffer</b>	<p>pH: 7.4</p> <p>Constituent: 99% PBS</p>
<b>Purity</b>	Protein A purified

<b>Clonality</b>	Polyclonal
<b>Isotype</b>	IgG

## Applications

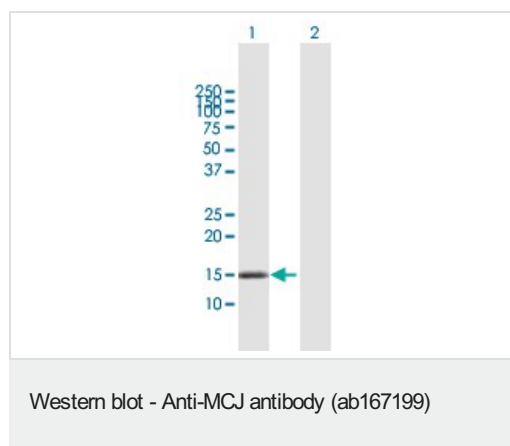
**The Abpromise guarantee** Our **Abpromise guarantee** covers the use of ab167199 in the following tested applications. The application notes include recommended starting dilutions; optimal dilutions/concentrations should be determined by the end user.

Application	Abreviews	Notes
<b>WB</b>		Use a concentration of 1 µg/ml. Predicted molecular weight: 16 kDa.

## Target

<b>Function</b>	Negative regulator of the mitochondrial respiratory chain. Prevents mitochondrial hyperpolarization state and restricts mitochondrial generation of ATP (By similarity). Acts as an import component of the TIM23 translocase complex. Stimulates the ATPase activity of HSPA9.
<b>Tissue specificity</b>	Expressed at highest levels in heart, followed by liver and kidney.
<b>Involvement in disease</b>	Absent or down-regulated in many advanced cases of ovarian adenocarcinoma, due to hypermethylation and allelic loss. Loss of expression correlates with increased resistance to antineoplastic drugs, such as cisplatin.
<b>Sequence similarities</b>	Contains 1 J domain.
<b>Cellular localization</b>	Mitochondrion inner membrane.

## Images



**All lanes** : Anti-MCJ antibody (ab167199) at 1 µg/ml

**Lane 1** : Lysate of 293T cells transfected with DNAJC15

**Lane 2** : Lysate of 293T cells (non-transfected)

Lysates/proteins at 15 µl per lane.

### Secondary

**All lanes** : Goat anti-mouse HRP conjugated antibody at 1/2500 dilution

**Predicted band size:** 16 kDa

**Please note:** All products are "FOR RESEARCH USE ONLY. NOT FOR USE IN DIAGNOSTIC PROCEDURES"

### **Our Abpromise to you: Quality guaranteed and expert technical support**

---

- Replacement or refund for products not performing as stated on the datasheet
- Valid for 12 months from date of delivery
- Response to your inquiry within 24 hours
  
- We provide support in Chinese, English, French, German, Japanese and Spanish
- Extensive multi-media technical resources to help you
- We investigate all quality concerns to ensure our products perform to the highest standards

If the product does not perform as described on this datasheet, we will offer a refund or replacement. For full details of the Abpromise, please visit <https://www.abcam.com/abpromise> or contact our technical team.

### **Terms and conditions**

---

- Guarantee only valid for products bought direct from Abcam or one of our authorized distributors