

Product datasheet

Anti-MCL1 antibody ab28147

[8 References](#) [3 Images](#)

Overview

| | |
|----------------------------|---|
| Product name | Anti-MCL1 antibody |
| Description | Rabbit polyclonal to MCL1 |
| Host species | Rabbit |
| Specificity | This antibody detects an ~42/43 kDa protein doublet, corresponding to the expected molecular mass of Mcl1 on SDS-PAGE immunoblots. The antibody specificity is confirmed by peptide inhibition studies. An additional protein at ~33kDa may also be detected. Other additional proteins may also be seen in some samples. |
| Tested applications | Suitable for: IHC-P, WB, ICC/IF |
| Species reactivity | Reacts with: Rabbit, Guinea pig, Dog, Human, Pig, Monkey |
| Immunogen | Synthetic peptide corresponding to Human MCL1 aa 121-139 conjugated to Keyhole Limpet Haemocyanin (KLH). Sequence: SPEEELDGYEPEPLGKRPA Run BLAST with Run BLAST with |
| Positive control | ICC/IF: Human HeLa cells; IHC-P: Human breast cancer tissue; WB: HeLa, MDCK and RK-13 whole cell lysates. |
| General notes | <p>The Life Science industry has been in the grips of a reproducibility crisis for a number of years. Abcam is leading the way in addressing this with our range of recombinant monoclonal antibodies and knockout edited cell lines for gold-standard validation. Please check that this product meets your needs before purchasing.</p> <p>If you have any questions, special requirements or concerns, please send us an inquiry and/or contact our Support team ahead of purchase. Recommended alternatives for this product can be found below, along with publications, customer reviews and Q&As</p> |

Properties

| | |
|-----------------------------|--|
| Form | Liquid |
| Storage instructions | Shipped at 4°C. Store at +4°C short term (1-2 weeks). Upon delivery aliquot. Store at -20°C or -80°C. Avoid freeze / thaw cycle. |
| Storage buffer | Preservative: 0.09% Sodium azide Constituent: PBS |

| | |
|------------------|-----------------------------|
| Purity | Immunogen affinity purified |
| Clonality | Polyclonal |
| Isotype | IgG |

Applications

The Abpromise guarantee Our **Abpromise guarantee** covers the use of ab28147 in the following tested applications. The application notes include recommended starting dilutions; optimal dilutions/concentrations should be determined by the end user.

| Application | Abreviews | Notes |
|-------------|-----------|---|
| IHC-P | | Use at an assay dependent concentration. |
| WB | | Use a concentration of 0.1 µg/ml. Predicted molecular weight: 42-43 kDa. 0.1 µg/ml was sufficient for detection of Mcl1 in 20µg of HeLa Heat Shocked Cell Lysate by ECL immunoblot analysis. |
| ICC/IF | | Use at an assay dependent concentration. |

Target

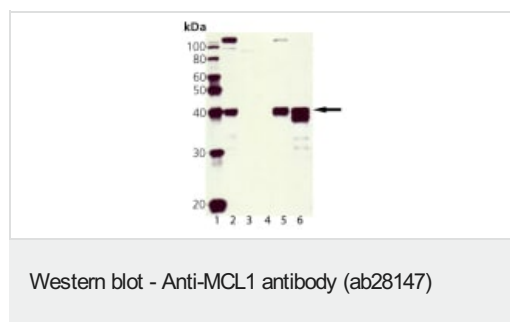
Function Involved in the regulation of apoptosis versus cell survival, and in the maintenance of viability but not of proliferation. Mediates its effects by interactions with a number of other regulators of apoptosis. Isoform 1 inhibits apoptosis. Isoform 2 promotes apoptosis.

Sequence similarities Belongs to the Bcl-2 family.

Post-translational modifications Cleaved by CASP3 during apoptosis. In intact cells cleavage occurs preferentially after Asp-127, yielding a pro-apoptotic 28 kDa C-terminal fragment.
Rapidly degraded in the absence of phosphorylation on Thr-163 in the PEST region.
Phosphorylated on Thr-163. Treatment with taxol or okadaic acid induces phosphorylation on additional sites.

Cellular localization Membrane. Cytoplasm. Mitochondrion. Nucleus > nucleoplasm. Cytoplasmic, associated with mitochondria.

Images



All lanes : Anti-MCL1 antibody (ab28147) at 1/500 dilution

Lane 2 : HeLa whole cell lysate

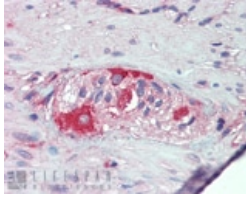
Lane 3 : 3T3 whole cell lysate

Lane 4 : PC-12 whole cell lysate

Lane 5 : MDCK whole cell lysate

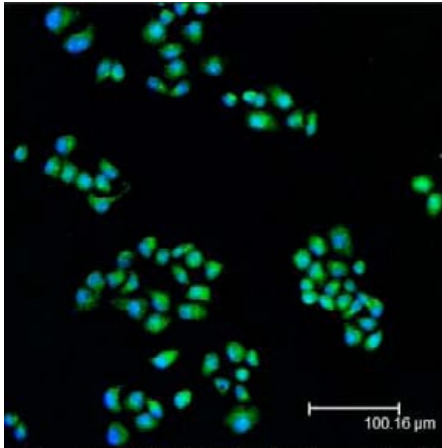
Lane 6 : RK-13 whole cell lysate

Predicted band size: 42-43 kDa



ab28147 staining MCL1 in human breast cancer tissue cells by Immunohistochemistry

Immunohistochemistry (Formalin/PFA-fixed paraffin-embedded sections) - Anti-MCL1 antibody (ab28147)



ab28147 staining MCL1 in human HeLa cells by Immunocytochemistry/ immunofluorescence.

Immunocytochemistry/ Immunofluorescence - Anti-MCL1 antibody (ab28147)

Please note: All products are "FOR RESEARCH USE ONLY. NOT FOR USE IN DIAGNOSTIC PROCEDURES"

Our Abpromise to you: Quality guaranteed and expert technical support

- Replacement or refund for products not performing as stated on the datasheet
- Valid for 12 months from date of delivery
- Response to your inquiry within 24 hours
- We provide support in Chinese, English, French, German, Japanese and Spanish
- Extensive multi-media technical resources to help you
- We investigate all quality concerns to ensure our products perform to the highest standards

If the product does not perform as described on this datasheet, we will offer a refund or replacement. For full details of the Abpromise, please visit <https://www.abcam.com/abpromise> or contact our technical team.

Terms and conditions

- Guarantee only valid for products bought direct from Abcam or one of our authorized distributors