


Product datasheet

Anti-MCM2 antibody [SP85] ab95361

Recombinant **RabMAb**

[2 References](#) [12 Images](#)

Overview

Product name	Anti-MCM2 antibody [SP85]
Description	Rabbit monoclonal [SP85] to MCM2
Host species	Rabbit
Tested applications	Suitable for: WB, IHC-P, Flow Cyt (Intra), ICC/IF
Species reactivity	Reacts with: Mouse, Rat, Human Predicted to work with: Cow, Dog 
Immunogen	Synthetic peptide within Human MCM2 aa 100-200. The exact sequence is proprietary. Database link: P49736
Positive control	WB: HeLa cell lysate. IHC-P: Human rectal carcinoma, human pancreas adenocarcinoma and human prostate tissue. ICC/IF: HeLa, NIH/3T3 and C6 cells. Flow Cyt (Intra): HeLa, NIH/3T3 and C6 cells.
General notes	This product is FOR RESEARCH USE ONLY. For commercial use, please contact partnerships@abcam.com.

Properties

Form	Liquid
Storage instructions	Shipped at 4°C. Store at +4°C.
Storage buffer	pH: 7.60 Preservative: 0.1% Sodium azide Constituents: PBS, 1% BSA
Purity	Protein A/G purified
Purification notes	Purified from TCS by protein A/G.
Clonality	Monoclonal
Clone number	SP85
Isotype	IgG

Applications

The Abpromise guarantee

Our **Abpromise guarantee** covers the use of ab95361 in the following tested applications.

The application notes include recommended starting dilutions; optimal dilutions/concentrations should be determined by the end user.

Application	Abreviews	Notes
WB		Use at an assay dependent concentration.
IHC-P		1/100. Antigen retrieval is recommended by the following method: boil tissue section in 1mM EDTA, pH 8.0 for 10 min followed by cooling at RT for 20 min.
Flow Cyt (Intra)		1/200. ab172730 - Rabbit monoclonal IgG, is suitable for use as an isotype control with this antibody.
ICC/IF		1/50.

Target

Function

Acts as component of the MCM2-7 complex (MCM complex) which is the putative replicative helicase essential for 'once per cell cycle' DNA replication initiation and elongation in eukaryotic cells. The active ATPase sites in the MCM2-7 ring are formed through the interaction surfaces of two neighboring subunits such that a critical structure of a conserved arginine finger motif is provided in trans relative to the ATP-binding site of the Walker A box of the adjacent subunit. The six ATPase active sites, however, are likely to contribute differentially to the complex helicase activity. Required for the entry in S phase and for cell division.

Sequence similarities

Belongs to the MCM family.
Contains 1 MCM domain.

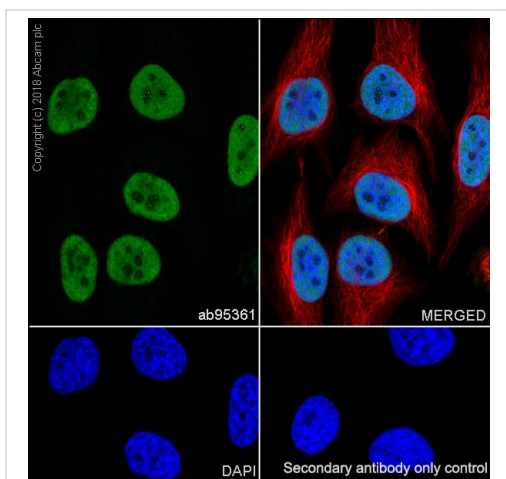
Post-translational modifications

Phosphorylated on Ser-108 by ATR in proliferating cells. Ser-108 proliferation is increased by genotoxic agents. Ser-40 is mediated by the CDC7-DBF4 and CDC7-DBF4B complexes, while Ser-53 phosphorylation is only mediated by the CDC7-DBF4 complex. Phosphorylation by the CDC7-DBF4 complex during G1/S phase is required for the initiation of DNA replication.

Cellular localization

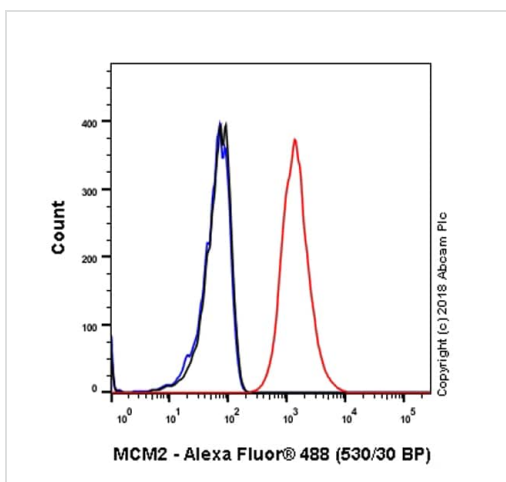
Nucleus.

Images



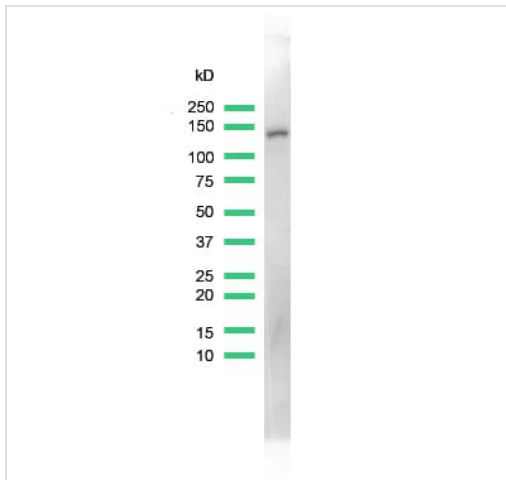
Immunocytochemistry/ Immunofluorescence - Anti-MCM2 antibody [SP85] (ab95361)

Immunocytochemistry/ Immunofluorescence analysis of HeLa (human cervix adenocarcinoma epithelial cell) cells labeling MCM2 with purified ab95361 at 1/50 (2.5 µg/ml). Cells were fixed in 4% paraformaldehyde and permeabilized with 0.1% Triton X-100. Cells were counterstained with **ab195889** Anti-alpha Tubulin antibody [DM1A] - Microtubule Marker (Alexa Fluor® 594) 1/200 (2.5 µg/ml). Goat anti rabbit IgG (Alexa Fluor® 488, **ab150077**) was used as the secondary antibody at 1/1000 (2 µg/ml) dilution. DAPI was used as nuclear counterstain. PBS instead of the primary antibody was used as the secondary antibody only control.



Flow Cytometry (Intracellular) - Anti-MCM2 antibody [SP85] (ab95361)

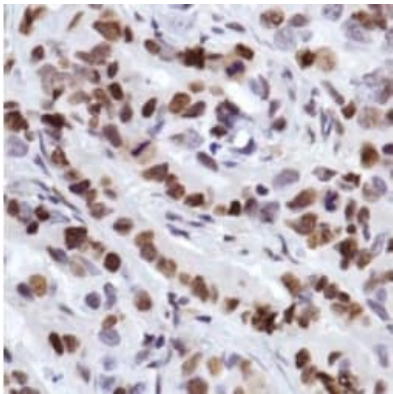
Flow cytometry analysis of HeLa (human cervix adenocarcinoma epithelial cell) labeling MCM2 with purified ab95361 at 1/200 dilution (0.615 µg/ml) (red). Cells were fixed with 4% paraformaldehyde and permeabilised with 90% methanol. Goat anti rabbit IgG (Alexa Fluor® 488, **ab150077**) at 1/2000 dilution was used as a secondary antibody. Isotype control - Rabbit monoclonal IgG (**ab172730**) (black). Unlabeled control - Unlabelled cells (blue).



Western blot - Anti-MCM2 antibody [SP85]
(ab95361)

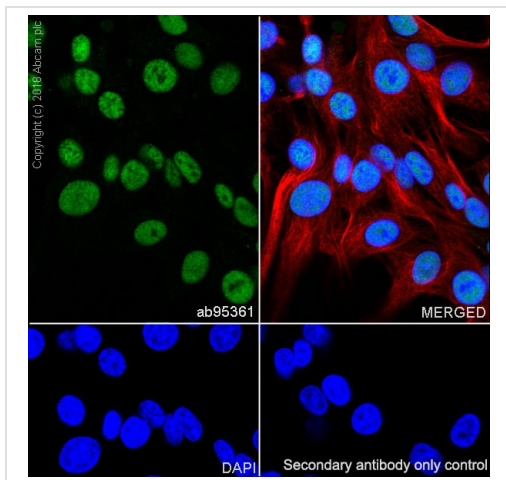
Anti-MCM2 antibody [SP85] (ab95361) at 1/100 dilution + lysate
prepared from HeLa cells

Observed band size: 130 kDa



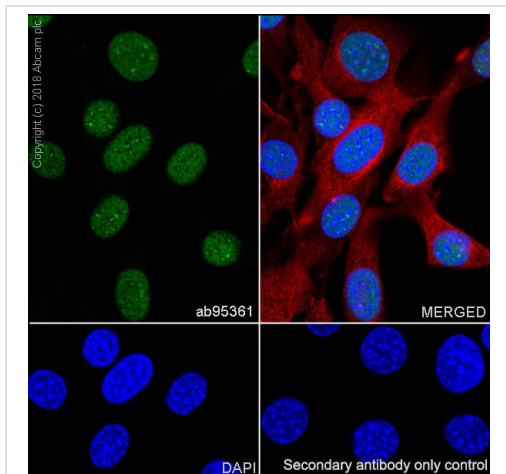
Immunohistochemistry (Formalin/PFA-fixed paraffin-
embedded sections) - Anti-MCM2 antibody [SP85]
(ab95361)

ab95361, at 1/100 dilution, staining MCM2 in formalin-fixed,
paraffin-embedded Human rectal carcinoma tissue by
Immunohistochemistry.



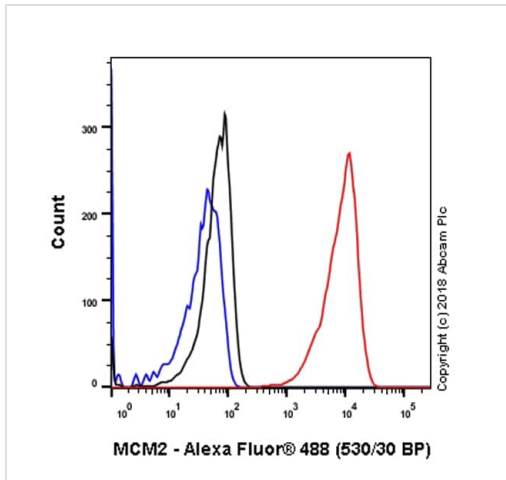
Immunocytochemistry/ Immunofluorescence - Anti-MCM2 antibody [SP85] (ab95361)

Immunocytochemistry/ Immunofluorescence analysis of C6 (rat glial tumor glial cell) cells labeling MCM2 with purified ab95361 at 1/50 (2.5 µg/ml). Cells were fixed in 4% paraformaldehyde and permeabilized with 0.1% Triton X-100. Cells were counterstained with **ab195889** Anti-alpha Tubulin antibody [DM1A] - Microtubule Marker (Alexa Fluor® 594) 1/200 (2.5 µg/ml). Goat anti rabbit IgG (Alexa Fluor® 488, **ab150077**) was used as the secondary antibody at 1/1000 (2 µg/ml) dilution. DAPI was used as nuclear counterstain. PBS instead of the primary antibody was used as the secondary antibody only control.



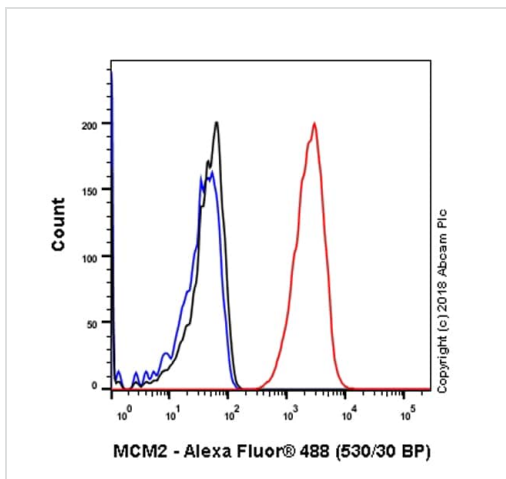
Immunocytochemistry/ Immunofluorescence - Anti-MCM2 antibody [SP85] (ab95361)

Immunocytochemistry/ Immunofluorescence analysis of NIH/3T3 (mouse embryonic fibroblast) cells labeling MCM2 with purified ab95361 at 1/50 (2.5 µg/ml). Cells were fixed in 4% paraformaldehyde and permeabilized with 0.1% Triton X-100. Cells were counterstained with **ab195889** Anti-alpha Tubulin antibody [DM1A] - Microtubule Marker (Alexa Fluor® 594) 1/200 (2.5 µg/ml). Goat anti rabbit IgG (Alexa Fluor® 488, **ab150077**) was used as the secondary antibody at 1/1000 (2 µg/ml) dilution. DAPI was used as nuclear counterstain. PBS instead of the primary antibody was used as the secondary antibody only control.



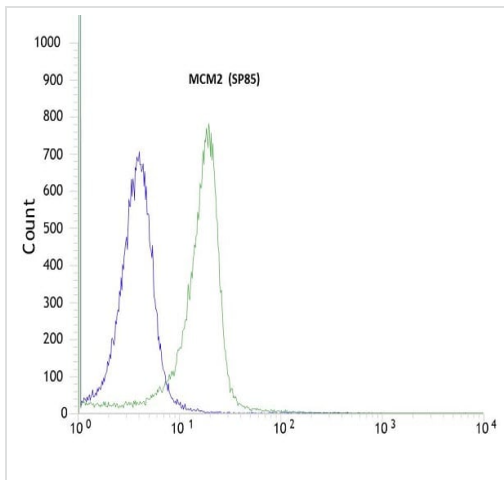
Flow Cytometry (Intracellular) - Anti-MCM2 antibody
[SP85] (ab95361)

Flow cytometry analysis of C6 (rat glial tumor glial cell) labeling MCM2 with purified ab95361 at 1/200 dilution (0.615 µg/ml) (red). Cells were fixed with 4% paraformaldehyde and permeabilised with 90% methanol. Goat anti rabbit IgG (Alexa Fluor® 488, [ab150077](#)) at 1/2000 dilution was used as a secondary antibody. Isotype control - Rabbit monoclonal IgG ([ab172730](#)) (black). Unlabeled control - Unlabelled cells (blue).



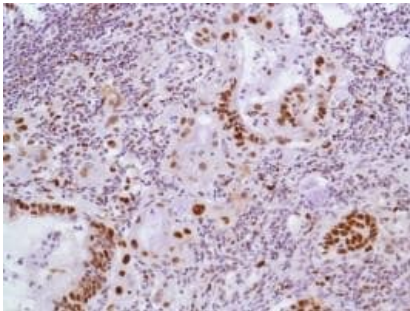
Flow Cytometry (Intracellular) - Anti-MCM2 antibody
[SP85] (ab95361)

Flow cytometry analysis of NIH/3T3 (mouse embryonic fibroblast) labeling MCM2 with purified ab95361 at 1/200 dilution (0.615 µg/ml) (red). Cells were fixed with 4% paraformaldehyde and permeabilised with 90% methanol. Goat anti rabbit IgG (Alexa Fluor® 488, [ab150077](#)) at 1/2000 dilution was used as a secondary antibody. Isotype control - Rabbit monoclonal IgG ([ab172730](#)) (black). Unlabeled control - Unlabelled cells (blue).



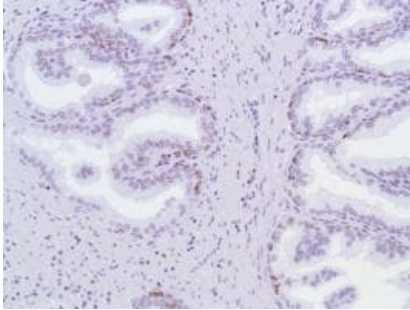
Flow cytometric analysis using rabbit anti-MCM2 (SP85) antibody ab95361(1/100) in HeLa cells (green) compared to negative control of rabbit IgG (blue).

Flow Cytometry (Intracellular) - Anti-MCM2 antibody [SP85] (ab95361)



ab95361, at 1/100 dilution, staining MCM2 in formalin-fixed, paraffin-embedded Human pancreas adenocarcinoma tissue by Immunohistochemistry.

Immunohistochemistry (Formalin/PFA-fixed paraffin-embedded sections) - Anti-MCM2 antibody [SP85] (ab95361)



ab95361, at 1/100 dilution, staining MCM2 in formalin-fixed, paraffin-embedded Human prostate tissue by Immunohistochemistry.

Immunohistochemistry (Formalin/PFA-fixed paraffin-embedded sections) - Anti-MCM2 antibody [SP85] (ab95361)

Why choose a recombinant antibody?



Research with confidence
Consistent and reproducible results



Long-term and scalable supply
Recombinant technology



Success from the first experiment
Confirmed specificity



Ethical standards compliant
Animal-free production

Anti-MCM2 antibody [SP85] (ab95361)

Please note: All products are "FOR RESEARCH USE ONLY. NOT FOR USE IN DIAGNOSTIC PROCEDURES"

Our Abpromise to you: Quality guaranteed and expert technical support

- Replacement or refund for products not performing as stated on the datasheet
- Valid for 12 months from date of delivery
- Response to your inquiry within 24 hours
- We provide support in Chinese, English, French, German, Japanese and Spanish
- Extensive multi-media technical resources to help you
- We investigate all quality concerns to ensure our products perform to the highest standards

If the product does not perform as described on this datasheet, we will offer a refund or replacement. For full details of the Abpromise, please visit <https://www.abcam.com/abpromise> or contact our technical team.

Terms and conditions

- Guarantee only valid for products bought direct from Abcam or one of our authorized distributors