


## Product datasheet

# Anti-MCM7/PRL antibody ab96849

[1 References](#) [5 Images](#)

### Overview

---

<b>Product name</b>	Anti-MCM7/PRL antibody
<b>Description</b>	Rabbit polyclonal to MCM7/PRL
<b>Host species</b>	Rabbit
<b>Tested applications</b>	<b>Suitable for:</b> ChIP, WB, IHC-P, ICC/IF, IP
<b>Species reactivity</b>	<b>Reacts with:</b> Human <b>Predicted to work with:</b> Mouse, Rat, Cow, Zebrafish 
<b>Immunogen</b>	Recombinant fragment corresponding to Human MCM7/PRL aa 14-275. Database link: <a href="#">P33993</a>
<b>Positive control</b>	WB: H1299 cell lysate. IHC-P: Cal27 Xenograft tissue. ICC/IF: HeLa cells. IP: HeLa cells. ChIP: HeLa cells.
<b>General notes</b>	<p>The Life Science industry has been in the grips of a reproducibility crisis for a number of years. Abcam is leading the way in addressing this with our range of recombinant monoclonal antibodies and knockout edited cell lines for gold-standard validation. Please check that this product meets your needs before purchasing.</p> <p>If you have any questions, special requirements or concerns, please send us an inquiry and/or contact our Support team ahead of purchase. Recommended alternatives for this product can be found below, along with publications, customer reviews and Q&amp;As</p>

### Properties

---

<b>Form</b>	Liquid
<b>Storage instructions</b>	Shipped at 4°C. Store at +4°C short term (1-2 weeks). Upon delivery aliquot. Store at -20°C or -80°C. Avoid freeze / thaw cycle.
<b>Storage buffer</b>	pH: 7.00 Preservative: 0.01% Thimerosal (merthiolate) Constituents: 1.21% Tris, 0.75% Glycine, 10% Glycerol (glycerin, glycerine)
<b>Purity</b>	Immunogen affinity purified
<b>Clonality</b>	Polyclonal
<b>Isotype</b>	IgG

## Applications

---

### The Abpromise guarantee

Our **Abpromise guarantee** covers the use of ab96849 in the following tested applications.

The application notes include recommended starting dilutions; optimal dilutions/concentrations should be determined by the end user.

Application	Abreviews	Notes
ChIP		Use at an assay dependent concentration.
WB		1/500 - 1/3000. Predicted molecular weight: 81 kDa.
IHC-P		1/100 - 1/1000.
ICC/IF		1/100 - 1/1000.
IP		1/100 - 1/250.

## Target

---

### Function

Acts as component of the MCM2-7 complex (MCM complex) which is the putative replicative helicase essential for 'once per cell cycle' DNA replication initiation and elongation in eukaryotic cells. The active ATPase sites in the MCM2-7 ring are formed through the interaction surfaces of two neighboring subunits such that a critical structure of a conserved arginine finger motif is provided in trans relative to the ATP-binding site of the Walker A box of the adjacent subunit. The six ATPase active sites, however, are likely to contribute differentially to the complex helicase activity. Required for S-phase checkpoint activation upon UV-induced damage.

### Sequence similarities

Belongs to the MCM family.  
Contains 1 MCM domain.

### Post-translational modifications

Phosphorylated upon DNA damage, probably by ATM or ATR.

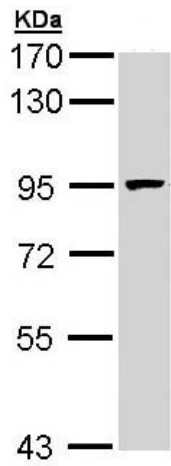
### Cellular localization

Nucleus.

---

## Images

---

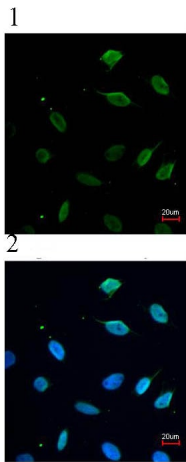


Western blot - Anti-MCM7/PRL antibody (ab96849)

Anti-MCM7/PRL antibody (ab96849) at 1/1000 dilution + H1299 whole cell lysate at 30  $\mu$ g

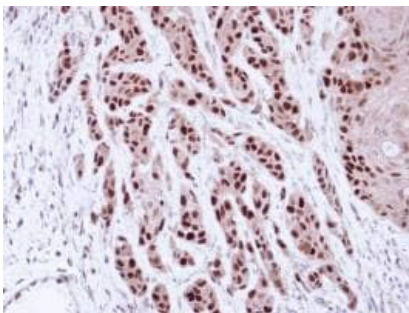
**Predicted band size:** 81 kDa

7.5% SDS PAGE



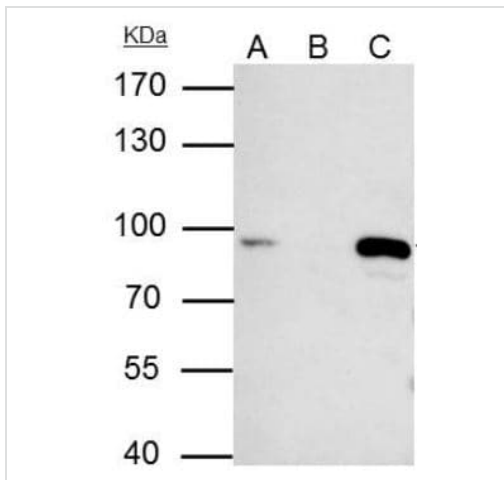
Immunocytochemistry/ Immunofluorescence - Anti-MCM7/PRL antibody (ab96849)

Immunofluorescence analysis of paraformaldehyde-fixed HeLa cells using ab96849 at 1/200 dilution (1). Merged with DNA probe (2).



Immunohistochemistry (Formalin/PFA-fixed paraffin-embedded sections) - Anti-MCM7/PRL antibody (ab96849)

Immunohistochemical analysis of paraffin-embedded Cal27 Xenograft using ab96849 at 1/100 dilution.



Immunoprecipitation - Anti-MCM7/PRL antibody (ab96849)

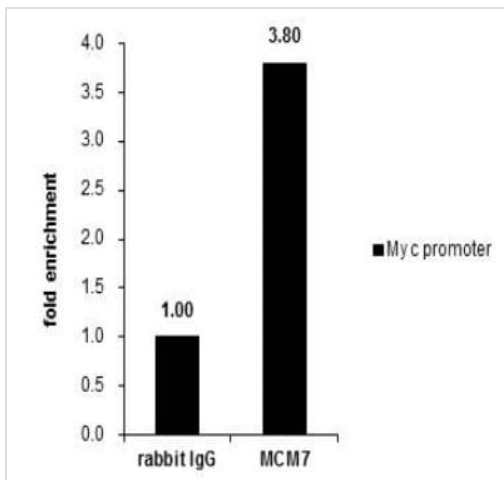
MCM7 was immunoprecipitated from 40 µg of HeLa whole cell lysate with ab96849 at 1/1000 dilution. EasyBlot anti-rabbit IgG, was used as secondary antibody.

Lane 1: 40 µg HeLa whole cell extract (Input).

Lane 2: Control with 4 µg of preimmune Rabbit IgG.

Lane 3: Immunoprecipitation of MCM7 protein by 4 µg MCM7 antibody [N2C2], Internal.

7.5 % SDS-PAGE



ChIP - Anti-MCM7/PRL antibody (ab96849)

Cross-linked ChIP was performed with HeLa chromatin extract and 5 µg of either control rabbit IgG or anti-MCM7 antibody. The precipitated DNA was detected by PCR with primer set targeting to Myc promoter.

**Please note:** All products are "FOR RESEARCH USE ONLY. NOT FOR USE IN DIAGNOSTIC PROCEDURES"

### Our Abpromise to you: Quality guaranteed and expert technical support

- Replacement or refund for products not performing as stated on the datasheet
- Valid for 12 months from date of delivery
- Response to your inquiry within 24 hours
- We provide support in Chinese, English, French, German, Japanese and Spanish
- Extensive multi-media technical resources to help you
- We investigate all quality concerns to ensure our products perform to the highest standards

If the product does not perform as described on this datasheet, we will offer a refund or replacement. For full details of the Abpromise,

please visit <https://www.abcam.com/abpromise> or contact our technical team.

## **Terms and conditions**

---

- Guarantee only valid for products bought direct from Abcam or one of our authorized distributors