

Product datasheet

Anti-MCM9 antibody ab235335

1 Image

Overview

Product name	Anti-MCM9 antibody
Description	Rabbit polyclonal to MCM9
Host species	Rabbit
Tested applications	Suitable for: WB Unsuitable for: IHC-P
Species reactivity	Reacts with: Mouse, Human
Immunogen	Recombinant fragment corresponding to Human MCM9 aa 1-391. Database link: Q9NXL9
Positive control	WB: Mouse brain tissue lysate. HEK-293T whole cell lysate.
General notes	<p>The Life Science industry has been in the grips of a reproducibility crisis for a number of years. Abcam is leading the way in addressing this with our range of recombinant monoclonal antibodies and knockout edited cell lines for gold-standard validation. Please check that this product meets your needs before purchasing.</p> <p>If you have any questions, special requirements or concerns, please send us an inquiry and/or contact our Support team ahead of purchase. Recommended alternatives for this product can be found below, along with publications, customer reviews and Q&As</p>

Properties

Form	Liquid
Storage instructions	Shipped at 4°C. Store at +4°C short term (1-2 weeks). Upon delivery aliquot. Store at -20°C long term. Avoid freeze / thaw cycle.
Storage buffer	pH: 7.40 Preservative: 0.03% Proclin 300 Constituents: 50% Glycerol (glycerin, glycerine), PBS
Purity	Protein G purified
Purification notes	Purity >95%
Clonality	Polyclonal
Isotype	IgG

Applications

The Abpromise guarantee

Our **Abpromise guarantee** covers the use of ab235335 in the following tested applications.

The application notes include recommended starting dilutions; optimal dilutions/concentrations should be determined by the end user.

Application	Abreviews	Notes
WB		1/1000 - 1/5000. Predicted molecular weight: 127 kDa.

Application notes

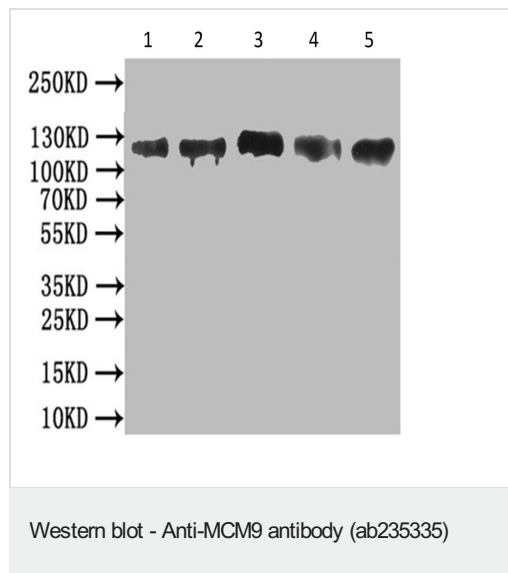
Is unsuitable for IHC-P.

Target

Relevance

MCM9, a member of the MCM2-8 family, binds to chromatin and is required for the recruitment of the MCM2-7 helicase onto chromatin. MCM9 can form a complex with Cdt1. It is thought that MCM9 might play an important role in DNA replication since its depletion results in its inhibition.

Images



All lanes : Anti-MCM9 antibody (ab235335) at 1/1000 dilution

Lane 1 : 293 whole cell lysate

Lane 2 : MCF7 whole cell lysate

Lane 3 : K562 whole cell lysate

Lane 4 : A549 whole cell lysate

Lane 5 : Mouse Brain tissue lysate

Secondary

All lanes : Secondary Goat polyclonal to rabbit IgG at 1/50000 dilution

Predicted band size: 127 kDa

Observed band size: 127 kDa

Please note: All products are "FOR RESEARCH USE ONLY. NOT FOR USE IN DIAGNOSTIC PROCEDURES"

Our Abpromise to you: Quality guaranteed and expert technical support

- Replacement or refund for products not performing as stated on the datasheet
- Valid for 12 months from date of delivery
- Response to your inquiry within 24 hours
- We provide support in Chinese, English, French, German, Japanese and Spanish
- Extensive multi-media technical resources to help you

- We investigate all quality concerns to ensure our products perform to the highest standards

If the product does not perform as described on this datasheet, we will offer a refund or replacement. For full details of the Abpromise, please visit <https://www.abcam.com/abpromise> or contact our technical team.

Terms and conditions

- Guarantee only valid for products bought direct from Abcam or one of our authorized distributors