




## Product datasheet

### Anti-MCP1 antibody ab9669

★★★★★ [4 Abreviews](#) [96 References](#) [4 Images](#)

#### Overview

<b>Product name</b>	Anti-MCP1 antibody
<b>Description</b>	Rabbit polyclonal to MCP1
<b>Host species</b>	Rabbit
<b>Tested applications</b>	<b>Suitable for:</b> WB, Sandwich ELISA
<b>Species reactivity</b>	<b>Reacts with:</b> Human
<b>Immunogen</b>	Recombinant fragment corresponding to Human MCP1.  <a href="#">Run BLAST with</a>  <a href="#">Run BLAST with</a> 
<b>General notes</b>	<p>Although some customers have been successful in IHC we no longer batch test in this application. For and IHC validated antibody please see <a href="#">ab73680</a></p> <p>The Life Science industry has been in the grips of a reproducibility crisis for a number of years. Abcam is leading the way in addressing this with our range of recombinant monoclonal antibodies and knockout edited cell lines for gold-standard validation. Please check that this product meets your needs before purchasing.</p> <p>If you have any questions, special requirements or concerns, please send us an inquiry and/or contact our Support team ahead of purchase. Recommended alternatives for this product can be found below, along with publications, customer reviews and Q&amp;As</p>

#### Properties

<b>Form</b>	Lyophilized:Reconstitute with 200µl of sterile water. Please note that if you receive this product in liquid form it has already been reconstituted as described and no further reconstitution is necessary.
<b>Storage instructions</b>	Shipped at 4°C. Store at +4°C short term (1-2 weeks). Upon delivery aliquot. Store at -20°C long term.
<b>Purity</b>	Immunogen affinity purified
<b>Clonality</b>	Polyclonal
<b>Isotype</b>	IgG
<b>Light chain type</b>	unknown

#### Applications

## The Abpromise guarantee

Our **Abpromise guarantee** covers the use of ab9669 in the following tested applications.

The application notes include recommended starting dilutions; optimal dilutions/concentrations should be determined by the end user.

Application	Abreviews	Notes
WB	★★★★★ (3)	Use a concentration of 0.1 - 0.2 µg/ml. To detect hMCAF/MCP-1 by Western Blot analysis this antibody can be used at a concentration of 0.1 - 0.2 µg/ml. Used in conjunction with compatible secondary reagents the detection limit for recombinant MCP-1 is 1.5 - 3.0 ng/lane, under either reducing or non-reducing conditions.
Sandwich ELISA		Use a concentration of 0.5 - 2 µg/ml. Can be paired for Sandwich ELISA with <b>Mouse monoclonal [2.2-4H5-1A11] to MCP1 (ab9858)</b> . To detect MCP-1 by sandwich ELISA (using 100 µl/well antibody solution) a concentration of 0.5 - 2.0 µg/ml of ab9669 is required. This antigen affinity purified antibody, in conjunction with <b>ab271250</b> as a detection antibody, allows the detection of at

## Target

### Function

Chemotactic factor that attracts monocytes and basophils but not neutrophils or eosinophils. Augments monocyte anti-tumor activity. Has been implicated in the pathogenesis of diseases characterized by monocytic infiltrates, like psoriasis, rheumatoid arthritis or atherosclerosis. May be involved in the recruitment of monocytes into the arterial wall during the disease process of atherosclerosis.

### Sequence similarities

Belongs to the intercrine beta (chemokine CC) family.

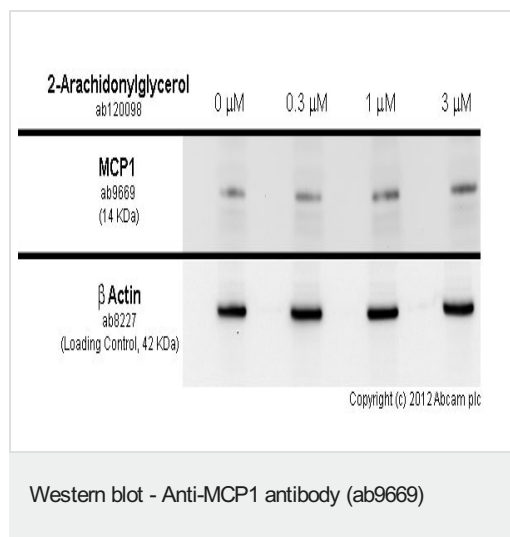
### Post-translational modifications

Processing at the N-terminus can regulate receptor and target cell selectivity. Deletion of the N-terminal residue converts it from an activator of basophil to an eosinophil chemoattractant.

### Cellular localization

Secreted.

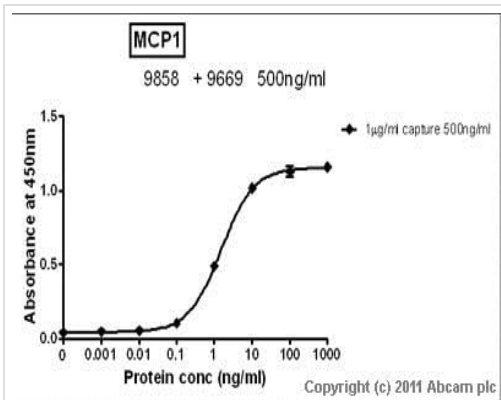
## Images



HL-60 cells were incubated at 37°C for 24hrs with vehicle control (0 µM) and varied concentrations of 2-Arachidonylglycerol (**ab120098**). Increased expression of MCP1 in HL-60 cells correlates with an increase in 2-Arachidonylglycerol concentration, as described in literature.

Whole cell lysates were prepared with RIPA buffer (containing protease inhibitors and sodium orthovanadate), 10µg of each were loaded on the gel and the WB was run under reducing conditions. After transfer the membrane was blocked for an hour using 5% BSA before being incubated with ab9669 at 1 µg/ml and **ab8227** at 1 µg/ml overnight at 4°C. Antibody binding was detected using an anti-rabbit antibody conjugated to HRP (**ab97051**) at 1/10000

dilution and visualised using ECL development solution.



Sandwich ELISA - Anti-MCP1 antibody (ab9669)

Standard curve for MCP1 (Analyte: **ab73866**); dilution range 1pg/ml to 1µg/ml using Capture Antibody Mouse monoclonal to MCP1 (**ab9858**) at 1µg/ml and Detector Antibody Rabbit polyclonal to MCP1 (ab9669) at 0.5µg/ml.



Western blot - Anti-MCP1 antibody (ab9669)

**All lanes :** Anti-MCP1 antibody (ab9669) at 0.2 µg/ml

**Lane 1 :** Recombinant human MCP1 protein (**ab73866**) at 0.01 µg

**Lane 2 :** Recombinant human MCP1 protein (**ab73866**) at 0.001 µg

#### Secondary

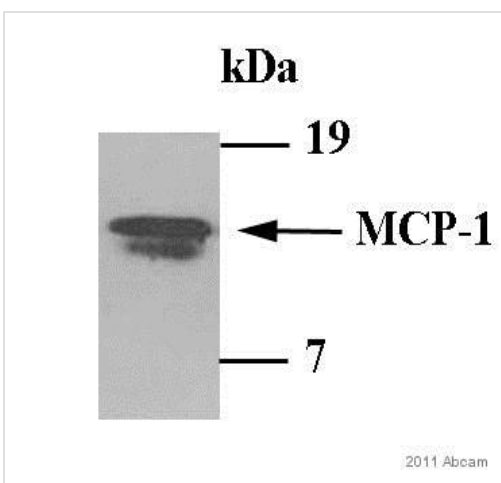
**All lanes :** Goat Anti-Rabbit IgG H&L (HRP) preadsorbed (**ab97080**) at 1/5000 dilution

Developed using the ECL technique.

Performed under reducing conditions.

**Exposure time:** 1 minute

Anti-MCP1 antibody (ab9669) at 1/4000 dilution + lysate prepared from human smooth muscle treated with 100µg/ml glycated LDL at 10 µg



Western blot - Anti-MCP1 antibody (ab9669)

Image courtesy of Dr Laura Toma by Abreview.

#### Secondary

Goat Anti-Rabbit IgG H&L (HRP) (**ab6721**) at 1/20000 dilution

Developed using the ECL technique.

**Observed band size:** 12-14 kDa

**Exposure time:** 1 minute

**Please note:** All products are "FOR RESEARCH USE ONLY. NOT FOR USE IN DIAGNOSTIC PROCEDURES"

### **Our Abpromise to you: Quality guaranteed and expert technical support**

---

- Replacement or refund for products not performing as stated on the datasheet
- Valid for 12 months from date of delivery
- Response to your inquiry within 24 hours
  
- We provide support in Chinese, English, French, German, Japanese and Spanish
- Extensive multi-media technical resources to help you
- We investigate all quality concerns to ensure our products perform to the highest standards

If the product does not perform as described on this datasheet, we will offer a refund or replacement. For full details of the Abpromise, please visit <https://www.abcam.com/abpromise> or contact our technical team.

### **Terms and conditions**

---

- Guarantee only valid for products bought direct from Abcam or one of our authorized distributors