

Product datasheet

Anti-MD2 antibody ab24182

★★★★☆ [15 Abreviews](#) [38 References](#) [10 Images](#)

Overview

Product name	Anti-MD2 antibody
Description	Rabbit polyclonal to MD2
Host species	Rabbit
Tested applications	Suitable for: WB, ICC/IF, IHC-P
Species reactivity	Reacts with: Mouse, Rat, Human
Immunogen	Synthetic peptide corresponding to Human MD2. MD-2 antibody was raised against a peptide corresponding to 13 amino acids near the center of human MD-2. The immunogen is located within the last 50 amino acids of MD-2. Database link: Q9Y6Y9 (Peptide available as ab39815)

General notes

The Life Science industry has been in the grips of a reproducibility crisis for a number of years. Abcam is leading the way in addressing this with our range of recombinant monoclonal antibodies and knockout edited cell lines for gold-standard validation. Please check that this product meets your needs before purchasing.

If you have any questions, special requirements or concerns, please send us an inquiry and/or contact our Support team ahead of purchase. Recommended alternatives for this product can be found below, along with publications, customer reviews and Q&As

Properties

Form	Liquid
Storage instructions	Shipped at 4°C. Store at +4°C short term (1-2 weeks). Store at +4°C.
Storage buffer	pH: 7.2 Preservative: 0.02% Sodium azide Constituent: PBS
Purity	Affinity purified
Purification notes	Via peptide column.
Clonality	Polyclonal
Isotype	IgG

Applications

The Abpromise guarantee

Our **Abpromise guarantee** covers the use of ab24182 in the following tested applications.

The application notes include recommended starting dilutions; optimal dilutions/concentrations should be determined by the end user.

Application	Abreviews	Notes
WB	★★★★☆ (5)	Use a concentration of 0.5 - 2 µg/ml. Detects a band of approximately 25 kDa (predicted molecular weight: 18 kDa).
ICC/IF	★★★★★ (2)	Use at an assay dependent concentration.
IHC-P	★★★★☆ (5)	Use at an assay dependent concentration.

Target

Function

Cooperates with TLR4 in the innate immune response to bacterial lipopolysaccharide (LPS), and with TLR2 in the response to cell wall components from Gram-positive and Gram-negative bacteria. Enhances TLR4-dependent activation of NF-kappa-B. Cells expressing both MD2 and TLR4, but not TLR4 alone, respond to LPS.

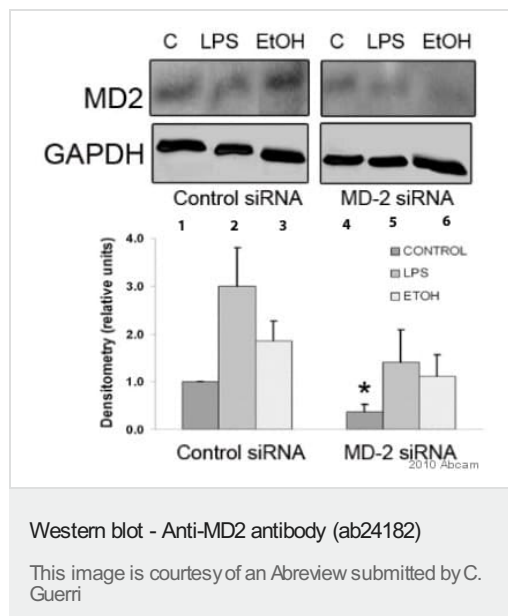
Post-translational modifications

N-glycosylated; high-mannose.

Cellular localization

Secreted > extracellular space.

Images



All lanes : Anti-MD2 antibody (ab24182) at 2 µg/ml (in 5% milk in TBS/T 0.1% (blocking buffer) for 12 hours at 4°C)

Lane 1 : Whole cell lysate of rat cortical astrocytes treated with control siRNA for 96 hours

Lane 2 : Whole cell lysate of rat cortical astrocytes treated with control siRNA for 96 hours and LPS (50 ng/ml) for 10 minutes

Lane 3 : Whole cell lysate of rat cortical astrocytes treated with control siRNA for 96 hours and ethanol (50 mM) for 10 minutes

Lane 4 : Whole cell lysate of rat cortical astrocytes treated with MD2 siRNA for 96 hours

Lane 5 : Whole cell lysate of rat cortical astrocytes treated with MD2 siRNA for 96 hours and LPS (50 ng/ml) for 10 minutes

Lane 6 : Whole cell lysate of rat cortical astrocytes treated with MD2 siRNA for 96 hours and ethanol (50 mM) for 10 minutes

Lysates/proteins at 40 µg per lane.

Secondary

All lanes : An HRP-conjugated Goat anti-rabbit IgG at 1/20000 dilution

Developed using the ECL technique.

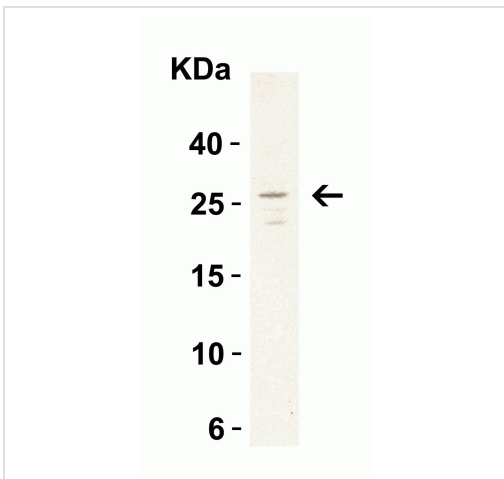
Performed under reducing conditions.

Predicted band size: 18 kDa

Observed band size: 25 kDa

Exposure time: 2 minutes

Blocking Step: 5% Milk for 1 hour at room temperature.



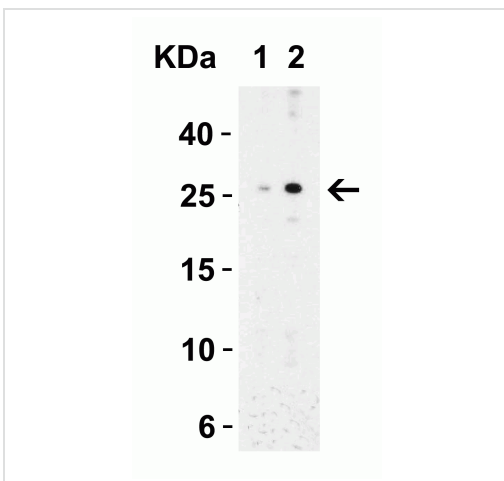
Western blot - Anti-MD2 antibody (ab24182)

Anti-MD2 antibody (ab24182) at 1 µg/ml + Daudi cell lysate at 15 µg

Secondary

Goat anti-rabbit IgG HRP conjugate at 1/10000 dilution

Predicted band size: 18 kDa



Western blot - Anti-MD2 antibody (ab24182)

Lane 1 : Anti-TRIM5 delta antibody (**ab24181**) at 0.5 µg/ml

Lane 2 : Anti-TRIM5 delta antibody (**ab24181**) at 1 µg/ml

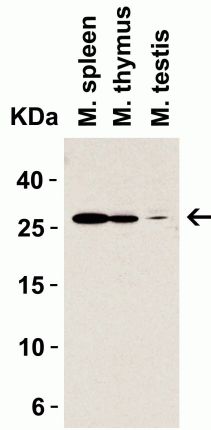
All lanes : Mouse spleen tissue

Lysates/proteins at 15 µg per lane.

Secondary

All lanes : Goat anti-rabbit IgG HRP conjugate at 1/10000 dilution

Predicted band size: 18 kDa



Western blot - Anti-MD2 antibody (ab24182)

All lanes : Anti-MD2 antibody (ab24182) at 1 µg/ml

Lane 1 : Mouse spleen lysate

Lane 2 : Mouse thymus lysate

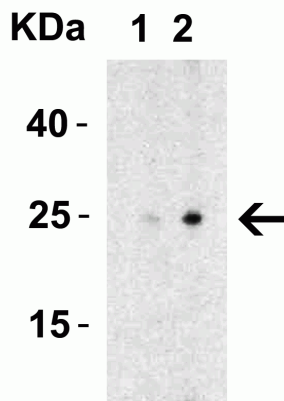
Lane 3 : Mouse testis lysate

Lysates/proteins at 15 µg per lane.

Secondary

All lanes : Goat anti-rabbit IgG HRP conjugate at 1/10000 dilution

Predicted band size: 18 kDa



Western blot - Anti-MD2 antibody (ab24182)

All lanes : Anti-MD2 antibody (ab24182)

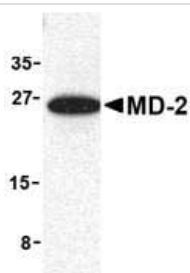
All lanes : Rat spleen lysate

Lysates/proteins at 15 µg per lane.

Secondary

All lanes : Goat anti-rabbit IgG HRP conjugate at 1/10000 dilution

Predicted band size: 18 kDa

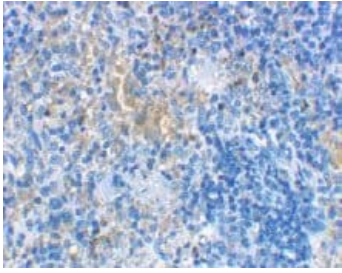


Western blot - Anti-MD2 antibody (ab24182)

Anti-MD2 antibody (ab24182) at 1 µg/ml (mouse spleen lysate)

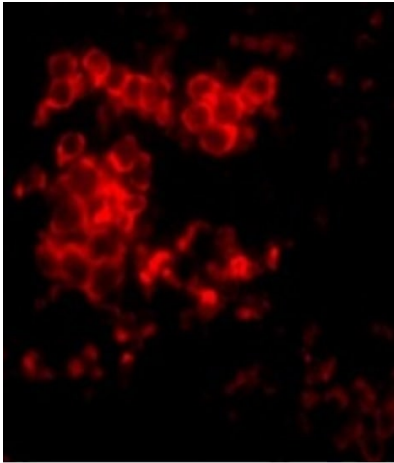
Predicted band size: 18 kDa

Observed band size: 26 kDa



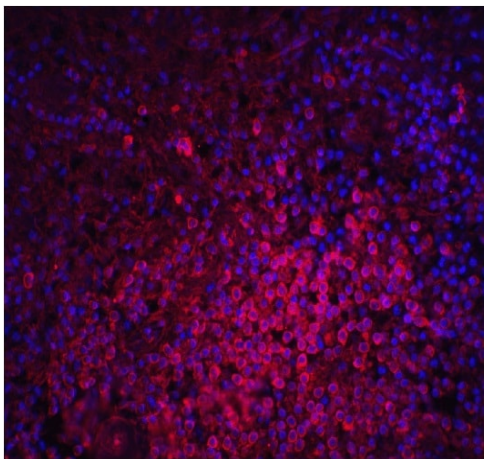
ab24182 at 2µg/ml staining of MD2 in rat spleen cells by IHC

Immunohistochemistry (Formalin/PFA-fixed paraffin-embedded sections) - Anti-MD2 antibody (ab24182)



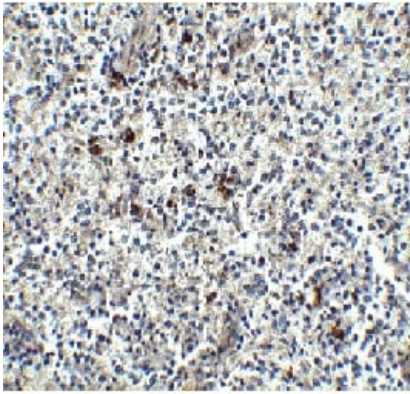
Immunofluorescent analysis of MD2 in Rat Spleen cells with ab24182 at 10 µg/mL in ICC/IF.

Immunocytochemistry/ Immunofluorescence - Anti-MD2 antibody (ab24182)



Immunofluorescent analysis of MD2 in human spleen cells with ab24182 at 20 µg/mL in ICC/IF.

Immunocytochemistry/ Immunofluorescence - Anti-MD2 antibody (ab24182)



Immunohistochemical analysis of human spleen tissue stained for MD2 using ab24182 at 2.5µg/mL.

Immunohistochemistry (Formalin/PFA-fixed paraffin-embedded sections) - Anti-MD2 antibody (ab24182)

Please note: All products are "FOR RESEARCH USE ONLY. NOT FOR USE IN DIAGNOSTIC PROCEDURES"

Our Abpromise to you: Quality guaranteed and expert technical support

- Replacement or refund for products not performing as stated on the datasheet
- Valid for 12 months from date of delivery
- Response to your inquiry within 24 hours
- We provide support in Chinese, English, French, German, Japanese and Spanish
- Extensive multi-media technical resources to help you
- We investigate all quality concerns to ensure our products perform to the highest standards

If the product does not perform as described on this datasheet, we will offer a refund or replacement. For full details of the Abpromise, please visit <https://www.abcam.com/abpromise> or contact our technical team.

Terms and conditions

- Guarantee only valid for products bought direct from Abcam or one of our authorized distributors