


## Product datasheet

### Anti-MDH1 antibody [EPR13596(B)] ab181091

Recombinant RabMAb

[2 References](#) [3 Images](#)

#### Overview

|                     |   |
|---------------------|---|
| Product name        | Anti-MDH1 antibody [EPR13596(B)]  |
| Description         | Rabbit monoclonal [EPR13596(B)] to MDH1   |
| Host species        | Rabbit  |
| Tested applications | <b>Suitable for:</b> Flow Cyt (Intra), WB   |
| Species reactivity  | <b>Reacts with:</b> Human<br><b>Predicted to work with:</b> Mouse, Rat    |
| Immunogen           | Synthetic peptide. This information is proprietary to Abcam and/or its suppliers.   |
| Positive control    | Human spleen, HepG2 and Jurkat lysates; Jurkat cells.   |
| General notes       | <p>This product is a recombinant monoclonal antibody, which offers several advantages including:</p> <ul style="list-style-type: none"> <li>- High batch-to-batch consistency and reproducibility</li> <li>- Improved sensitivity and specificity</li> <li>- Long-term security of supply</li> <li>- Animal-free production</li> </ul> <p>For more information <a href="#">see here</a>.</p> <p>Our RabMAb<sup>®</sup> technology is a patented hybridoma-based technology for making rabbit monoclonal antibodies. For details on our patents, please refer to <a href="#">RabMAb<sup>®</sup> patents</a>.</p> |

#### Properties

|                      |   |
|----------------------|---|
| Form                 | Liquid  |
| Storage instructions | Shipped at 4°C. Store at +4°C short term (1-2 weeks). Upon delivery aliquot. Store at -20°C long term. Avoid freeze / thaw cycle. |
| Storage buffer       | Preservative: 0.01% Sodium azide<br>Constituents: 40% Glycerol (glycerin, glycerine), 59% PBS, 0.05% BSA                          |
| Purity               | Tissue culture supernatant  |
| Clonality            | Monoclonal  |
| Clone number         | EPR13596(B)   |
| Isotype              | IgG   |

## Applications

### The Abpromise guarantee

Our **Abpromise guarantee** covers the use of ab181091 in the following tested applications.

The application notes include recommended starting dilutions; optimal dilutions/concentrations should be determined by the end user.

| Application      | Abreviews | Notes  |
|------------------|-----------|--|
| Flow Cyt (Intra) |           | 1/100.<br><b>ab172730</b> - Rabbit monoclonal IgG, is suitable for use as an isotype control with this antibody. |
| WB               |           | 1/1000 - 1/2000. Detects a band of approximately 36 kDa (predicted molecular weight: 36 kDa).                    |

## Target

### Sequence similarities

Belongs to the LDH/MDH superfamily. MDH type 2 family.

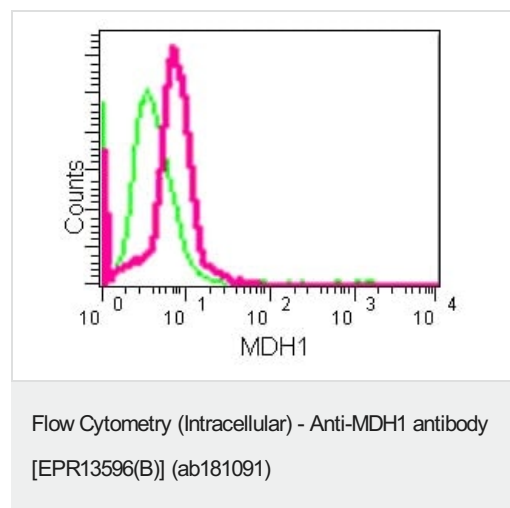
### Post-translational modifications

ISGylated.

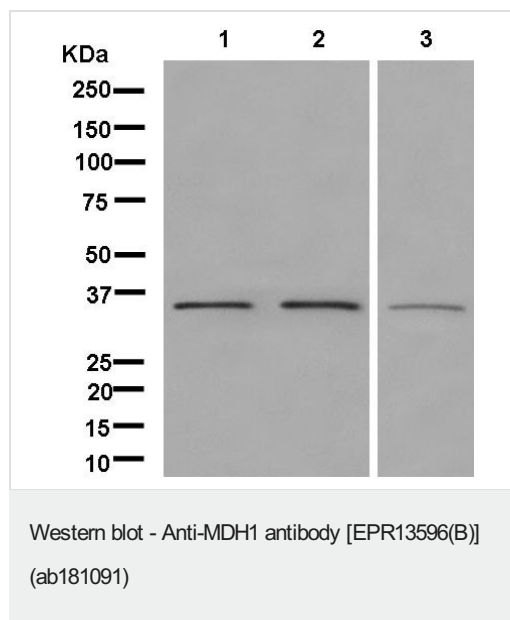
### Cellular localization

Cytoplasm.

## Images



Intracellular flow cytometric analysis of 2%paraformaldehyde-fixedJurkat cells labeling MDH1 with ab181091 at 1/100 dilution (red) compared to a Rabbit monoclonal IgG isotype control (green), followed by Goat anti rabbit IgG (FITC) secondary antibody at 1/150 dilution.



**All lanes :** Anti-MDH1 antibody [EPR13596(B)] (ab181091) at 1/2000 dilution

**Lane 1 :** Human spleen lysate

**Lane 2 :** HepG2 cell lysate

**Lane 3 :** HeLa cell lysate

Lysates/proteins at 20 µg per lane.

#### Secondary

**All lanes :** Goat Anti-Rabbit IgG, (H+L), Peroxidase conjugate at 1/1000 dilution

**Predicted band size:** 36 kDa

**Observed band size:** 36 kDa

Why choose a recombinant antibody?

**Research with confidence**  
Consistent and reproducible results

**Long-term and scalable supply**  
Recombinant technology

**Success from the first experiment**  
Confirmed specificity

**Ethical standards compliant**  
Animal-free production

Anti-MDH1 antibody [EPR13596(B)] (ab181091)

**Please note:** All products are "FOR RESEARCH USE ONLY. NOT FOR USE IN DIAGNOSTIC PROCEDURES"

**Our Abpromise to you: Quality guaranteed and expert technical support**

- Replacement or refund for products not performing as stated on the datasheet
- Valid for 12 months from date of delivery
- Response to your inquiry within 24 hours
- We provide support in Chinese, English, French, German, Japanese and Spanish
- Extensive multi-media technical resources to help you
- We investigate all quality concerns to ensure our products perform to the highest standards

If the product does not perform as described on this datasheet, we will offer a refund or replacement. For full details of the Abpromise, please visit <https://www.abcam.com/abpromise> or contact our technical team.

#### **Terms and conditions**

---

- Guarantee only valid for products bought direct from Abcam or one of our authorized distributors